



ASPIRE HIGHER

2023-24 | Graduate College Viewbook

Table of Contents

Who We Are	4
By the Numbers	5
Master's Program Offerings	
Business	6
Engineering	7
Health and Human Services	8
Lab Sciences	9
Management	10
Social Sciences and Humanities	11
Technology	12
Dual Degree Programs	13
Education Degrees	14
Doctoral Program Offerings	16
Student Success	17



At KSU, graduate students become the individuals that others want as colleagues and as **leaders**.

Who We Are

The Graduate College works alongside stakeholders to find ways to increase graduate enrollment and student retention rates by anticipating the needs of the University's graduate programs, raising the quality and accountability in graduate education, improving financial support, and fostering professional development. From processing graduate applications to guiding students toward the completion of their degrees, the Graduate College staff supports students' academic progress along the way.



Flexible, Ranked Graduate Degrees and Programs

Kennesaw State University offers a variety of graduate programs that provide students with the opportunity to develop advanced skills and knowledge in their chosen fields. As an R2 institution, Kennesaw State University is committed to research excellence and offers a range of graduate research opportunities. These opportunities allow graduate students to work alongside faculty members on cutting-edge research projects and contribute to the creation of new knowledge in their respective fields.

As a graduate student at Kennesaw State, you get unparalleled support, access to innovative resources and opportunities to expand your academic and professional goals. At the Graduate College, we assist your journey from program selection to graduation and throughout your current and future career choices.

Mission

The Graduate College advances Kennesaw State University's graduate mission through strategic development, refinement, and stewardship of distinctive, relevant, and quality graduate programs serving students and society. The Graduate College guides, enables, and ensures innovation, growth, and expectation in graduate education. We seek to advance knowledge and educate individuals, enriching and empowering them to achieve lives of purpose and meaningful contribution.

Vision

We will be one of the most innovative graduate colleges in the nation, aspiring to raise Kennesaw State University to be an exemplar of strategic purpose, practice, efficiency and relevance in graduate education while compellingly demonstrating the advantages of graduate education for individuals and society.

104

Graduate and Professional Programs



On Campus, Online, and Hybrid learning available



4,541 Graduate Students Fall 2023 Enrollment



1,977 Graduate Degrees Conferred in Academic Year 2022-2023



Business Offerings

Engineering Offerings

Master of Accounting

Program Format: Face-to-Face
Credit Hours: 30 Total Hours
Entry Terms: Fall
Curriculum: Structured
Application Deadlines:
 Fall, July 1st

Executive MBA Business Administration

Program Format: Face-to-Face
Credit Hours: 48 Total Hours
Entry Terms: Fall
Curriculum: Flexible
Application Deadlines:
 Fall, July 1st



MBA Business Administration

Program Format: Face-to-Face
Credit Hours: 36 Total Hours
Entry Terms: Fall, Spring
Curriculum: Flexible
Application Deadlines:
 Fall, July 1st
 Spring, November 1st
 Summer, April 1st

Web MBA Business Administration

Program Format: Online
Credit Hours: 30 Total Hours
Entry Terms: Fall, Spring
Curriculum: Structured
Application Deadlines:
 Fall, July 1st
 Spring, November 1st

MS Digital Financial Technologies (FINTECH)

Program Format: Online
Credit Hours: 30 Total Hours
Entry Terms: Fall, Spring, Summer
Curriculum: Flexible
Application Deadlines:
 Fall, July 1st
 Spring, November 1st
 Summer, April 1st

MS Civil Engineering

Program Format: Hybrid
Credit Hours: 30 Total Hours
Entry Terms: Fall, Spring, Summer
Curriculum: Flexible
Application Deadlines:
 Fall, July 1st
 Spring, November 1st
 Summer, April 1st

MS Construction Management

Program Format: Face-to-Face
Credit Hours: 36 Total Hours
Entry Terms: Fall, Spring, Summer
Curriculum: Flexible
Application Deadlines:
 Fall, July 1st
 Spring, November 1st

MS Electrical and Computer Engineering

Program Format: Hybrid
Credit Hours: 30 Total Hours
Entry Terms: Fall, Spring, Summer
Curriculum: Flexible
Application Deadlines:
 Fall, July 1st
 Spring, November 1st
 Summer, April 1st

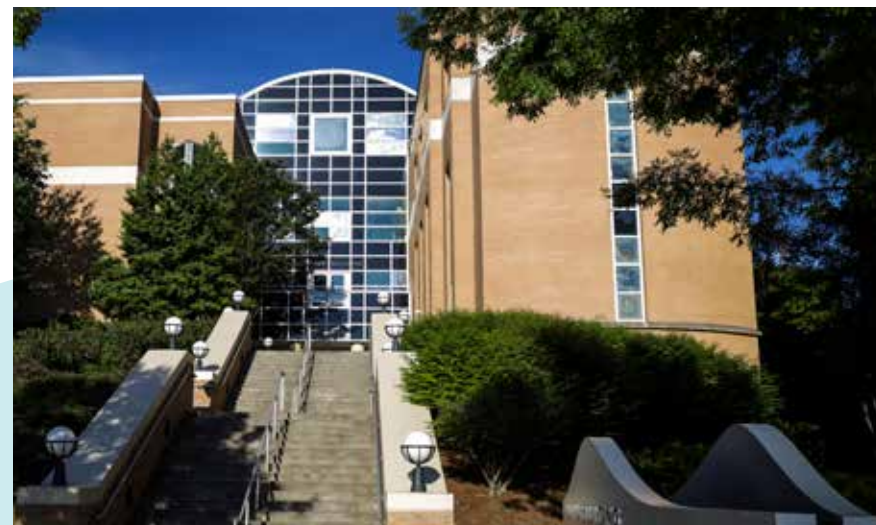
MS Engineering Management

Program Format: Online, Hybrid, Face-to-Face
Credit Hours: 30 Total Hours
Entry Terms: Fall, Spring, Summer
Curriculum: Flexible
Application Deadlines:
 Fall, July 1st
 Spring, November 1st
 Summer, April 1st



MS Healthcare Management and Informatics

Program Format: Hybrid
Credit Hours: 36 Total Hours
Entry Terms: Fall
Curriculum: Flexible
Application Deadlines:
 Fall, August 1st



MS Intelligent Robotic Systems

Program Format: Online
Credit Hours: 30 Total Hours
Entry Terms: Fall, Spring, Summer
Curriculum: Flexible
Application Deadlines:
 Fall, July 1st
 Spring, November 1st

MS Mechanical Engineering

Program Format: Hybrid
Credit Hours: 30 Total Hours
Entry Terms: Fall, Spring, Summer
Curriculum: Structured
Application Deadlines:
 Fall, July 1st
 Spring, November 1st
 Summer, April 1st

MS Systems Engineering

Program Format: Online
Credit Hours: 30 Total Hours
Entry Terms: Fall, Spring, Summer
Curriculum: Flexible
Application Deadlines:
 Fall, July 1st
 Spring, November 1st
 Summer, April 1st

Health and Human Services Offerings

Lab Science Offerings

MS Criminal Justice

Program Format: Online, Hybrid, Face-to-Face
Credit Hours: 33-36 Total Hours
Entry Terms: Fall, Spring
Curriculum: Flexible
Application Deadlines:
 Fall, July 1st
 Spring, November 1st

MS Exercise Science

Program Format: Online, Hybrid, Face-to-Face
Credit Hours: 30 Total Hours
Entry Terms: Fall, Spring, Summer
Curriculum: Flexible
Application Deadlines:
 Fall, July 1st
 Spring, November 1st
 Summer, April 1st

MSN Family Nurse Practitioner

Program Format: Hybrid
Credit Hours: 40 Total Hours
Entry Terms: Fall
Curriculum: Structured
Application Deadlines:
 Fall, July 1st

Accredited by Commission on Collegiate Education for Nursing

MS Chemical Sciences

Program Format: Face-to-Face
Credit Hours: 33 Total Hours
Entry Terms: Fall
Curriculum: Flexible
Application Deadlines:
 Fall, March 1st



MS Electrical and Computer Engineering

Program Format: Hybrid
Credit Hours: 30 Total Hours
Entry Terms: Fall, Spring, Summer
Curriculum: Flexible
Application Deadlines:
 Fall, July 1st
 Spring, November 1st
 Summer, April 1st

MS Healthcare Management and Informatics

Program Format: Hybrid
Credit Hours: 36 Total Hours
Entry Terms: Fall
Curriculum: Flexible
Application Deadlines:
 Fall, August 1st

MSN Leadership in Nursing

Program Format: Varies
Credit Hours: 40 Total Hours
Entry Terms: Fall
Curriculum: Structured
Application Deadlines:
 Fall, August 1st

Accredited by Commission on Collegiate Education for Nursing



MS Information Technology

Program Format: Online, Hybrid, Face-to-Face
Credit Hours: 30 Total Hours
Entry Terms: Fall, Spring, Summer
Curriculum: Flexible
Application Deadlines:
 Fall, July 1st
 Spring, November 1st
 Summer, April 1st

MS Software Engineering

Program Format: Online, Hybrid, Face-to-Face
Credit Hours: 30 Total Hours
Entry Terms: Fall, Spring, Summer
Curriculum: Flexible
Application Deadlines:
 Fall, July 1st
 Spring, November 1st
 Summer, April 1st

MS Integrative Biology

Program Format: Face-to-Face
Credit Hours: 36 Total Hours
Entry Terms: Fall
Curriculum: Flexible
Application Deadlines:
 Fall Priority, January 15th
 Final, April 1st

MS Prosthetics and Orthotics

Program Format: Face-to-face
Credit Hours: 48 Total Hours
Entry Terms: Fall
Curriculum: Structured
Application Deadlines:
 Fall, August 1st

MPA Public Administration

Program Format: Hybrid
Credit Hours: 36 Total Hours
Entry Terms: Fall, Spring
Curriculum: Flexible
Application Deadlines:
 Fall, July 1st
 Spring, November 1st
 Summer, April 1st

MSW Social Work

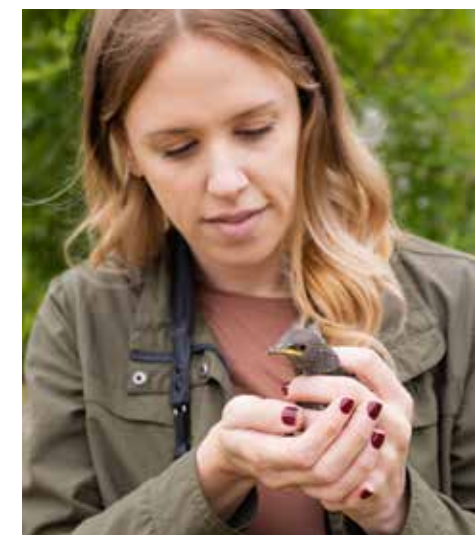
Program Format: Face-to-Face
Credit Hours: 36 Total Hours
Entry Terms: Fall, Spring
Curriculum: Flexible
Application Deadlines:
 Fall, July 1st
 Spring, November 1st

MS Computer Science

Program Format: Online, Hybrid, Face-to-Face
Credit Hours: 30 Total Hours
Entry Terms: Fall, Spring, Summer
Curriculum: Flexible
Application Deadlines:
 Fall, July 1st
 Spring, November 1st
 Summer, April 1st

MS Data Science and Analytics

Program Format: Face-to-Face
Credit Hours: 36 Total Hours
Entry Terms: Fall, Spring
Curriculum: Flexible
Application Deadlines:
 Fall, July 1st
 Spring, November 1st



Management | Offerings

Social Sciences, Art, and Humanities | Offerings

Master of Accounting

Program Format: Face-to-Face
Credit Hours: 30 Total Hours
Entry Terms: Fall
Curriculum: Flexible
Application Deadlines:
 Fall Priority, January 15th
 Fall, July 1st



MBA Business Administration

Program Format: Face-to-Face
Credit Hours: 36 Total Hours
Entry Terms: Fall, Spring
Curriculum: Flexible
Application Deadlines:
 Fall, July 1st
 Spring, November 1st
 Summer, April 1st

MA American Studies

Program Format: Hybrid
Credit Hours: 30 Total Hours
Entry Terms: Fall, Spring, Summer
Curriculum: Flexible
Application Deadlines:
 Fall, July 1st
 Spring, November 1st
 Summer, April 1st

MA Art and Design

Program Format: Online
Credit Hours: 30 Total Hours
Entry Terms: Fall
Curriculum: Flexible
Application Deadlines:
 Priority, February 1st
 Final, May 1st

MS Criminal Justice

Program Format: Online, Hybrid, Face-to-Face
Credit Hours: 33-36 Total Hours
Entry Terms: Fall, Spring
Curriculum: Flexible
Application Deadlines:
 Fall, July 1st
 Spring, November 1st

MS Construction Management

Program Format: Face-to-Face
Credit Hours: 36 Total Hours
Entry Terms: Fall, Spring
Curriculum: Flexible
Application Deadlines:
 Fall, July 1st
 Spring, November 1st

MS Engineering Management

Program Format: Online
Credit Hours: 36 Total Hours
Entry Terms: Fall
Curriculum: Flexible
Application Deadlines:
 Fall, July 1st

MS Healthcare Management and Informatics

Program Format: Hybrid
Credit Hours: 36 Total Hours
Entry Terms: Fall
Curriculum: Flexible
Application Deadlines:
 Fall, August 1st

MS Conflict Management

Program Format: Hybrid
Credit Hours: 36 Total Hours
Entry Terms: Fall
Curriculum: Flexible
Application Deadlines:
 Priority, March 1st
 Fall, July 1st

MA Integrated Global Communications

Program Format: Hybrid
Credit Hours: 30 Total Hours
Entry Terms: Fall, Spring
Curriculum: Flexible
Application Deadlines:
 Fall, June 1st
 Spring, November 1st

MS International Policy Management

Program Format: Online
Credit Hours: 30 Total Hours
Entry Terms: Fall
Curriculum: Structured
Application Deadlines:
 Fall, July 1st

MS International Policy Management

Program Format: Online
Credit Hours: 30 Total Hours
Entry Terms: Fall
Curriculum: Structured
Time to Complete: 2 Years
Application Deadlines:
 Fall, July 1st

MPA Public Administration

Program Format: Hybrid
Credit Hours: 36 Total Hours
Entry Terms: Fall, Spring
Curriculum: Flexible
Application Deadlines:
 Fall, July 1st
 Spring, November 1st
 Summer, April 1st

MS Systems Engineering

Program Format: Online
Credit Hours: 30 Total Hours
Entry Terms: Fall, Spring, Summer
Curriculum: Flexible
Application Deadlines:
 Fall, July 1st
 Spring, November 1st
 Summer, April 1st

MA Professional Writing

Program Format: Hybrid
Credit Hours: 36 Total Hours
Entry Terms: Fall, Spring
Curriculum: Flexible
Application Deadlines:
 Fall, July 1st
 Spring, November 1st

MPA Public Administration

Program Format: Hybrid
Credit Hours: 36 Total Hours
Entry Terms: Fall, Spring
Curriculum: Flexible
Application Deadlines:
 Fall, July 1st
 Spring, November 1st
 Summer, April 1st

Externally accredited NASPA accreditation

MSW Social Work

Program Format: Face-to-Face
Credit Hours: 36 Total Hours
Entry Terms: Fall, Spring
Curriculum: Flexible
Application Deadlines:
 Fall, July 1st
 Spring, November 1st

Technology Offerings

Dual Degrees Offerings

MS Computer Science

Program Format: Online, Hybrid, Face-to-Face
Credit Hours: 30 Total Hours
Entry Terms: Fall, Spring, Summer
Curriculum: Flexible
Application Deadlines:
 Fall, July 1st
 Spring, November 1st
 Summer, April 1st

MS Cybersecurity

Program Format: Online
Credit Hours: 30 Total Hours
Entry Terms: Fall, Spring
Curriculum: Structured
Application Deadlines:
 Fall, July 1st
 Spring, November 1st

MS Data Science and Analytics

Program Format: Face-to-Face
Credit Hours: 36 Total Hours
Entry Terms: Fall, Spring
Curriculum: Flexible
Application Deadlines:
 Fall, July 1st
 Spring, November 1st

MS Digital Financial Technologies (FINTECH)

Program Format: Online
Credit Hours: 30 Total Hours
Entry Terms: Fall, Spring, Summer
Curriculum: Flexible
Application Deadlines:
 Fall, July 1st
 Spring, November 1st
 Summer, April 1st



MS Healthcare Management and Informatics

Program Format: Hybrid
Credit Hours: 36 Total Hours
Entry Terms: Fall
Curriculum: Flexible
Application Deadlines:
 Fall, August 1st

MS Information Systems

Program Format: Online
Credit Hours: 30 Total Hours
Entry Terms: Fall, Spring, Summer
Curriculum: Structured
Application Deadlines:
 Fall, July 1st
 Spring, November 1st
 Summer, April 1st

MS Information Technology

Program Format: Online, Hybrid, Face-to-Face
Credit Hours: 30 Total Hours
Entry Terms: Fall, Spring, Summer
Curriculum: Flexible
Application Deadlines:
 Fall, July 1st
 Spring, November 1st
 Summer, April 1st

MS Software Engineering

Program Format: Online, Hybrid, Face-to-Face
Credit Hours: 30 Total Hours
Entry Terms: Fall, Spring, Summer
Curriculum: Flexible
Application Deadlines:
 Fall, July 1st
 Spring, November 1st
 Summer, April 1st

Business Administration and Social Work: MBA/MSW

The objective of this dual degree program is to create future leaders and change agents who create “social value” by focusing on the triple-bottom line and initiate purposeful “social change.” The competencies acquired through the dual degrees will be sought after by Corporate Social Responsibility (CSR) units in companies, Employee Assistance Programs (EAPs), and large managed care organizations (behavioral and physical health) to name a few. Additionally, graduates can also launch their own social entrepreneurial ventures, social enterprises, and private practices. Hence, graduates can be employed by organizations in all three sectors (private, nonprofit, and public).

Business and Information Systems: MBA/MSIS

Acquire valuable skills necessary to be a technology leader in tomorrow’s global business environment. The MBA-MSIS brings business strategy to technology projects and technological innovation to business challenges. By blending best business practices and strategic technology skills, students acquire the knowledge necessary to become qualified and capable leaders for cutting-edge global organizations.

Business and Conflict Management: MBA/MSCM

The primary objective of this program is to prepare students for competitive leadership and managerial positions in careers requiring extensive understanding and interaction with conflict management and business acumen. The students’ desire for this program comes from the extensive interaction between the two sectors in areas such as global project management, negotiations and contracting.

Business and Public Administration: MBA/MPA

The increasing interdependence of the public and private sectors makes this dual degree program not only innovative, but attractive to students wishing to pursue careers in positions responsible for working with their counterparts in private and public organizations, and in a variety of settings where both the knowledge of business and government are very crucial.

Public Administration and Integrated Global Communication: MPA/MAIGC

MPA/MAIGC students will earn two master’s degrees in three years, both in Public Administration and Integrated Global Communication. The program is aimed at students interested in serving as communications professionals in the government and nonprofit sectors. The public’s demand for information about the actions of public sector organizations, especially in emergency situations, requires professionals to be well versed in how governments operate and to communicate effectively with different audiences.

Public Administration and Criminal Justice: MPA/MSCJ

The objective of this program is to allow students who are interested in serving in public administration and criminal justice to register concurrently in both the MPA and MSCJ programs. The demand for leaders in both these career areas requires professionals well versed in how the public sector operates and how to administer effectively criminal justice programs.

Educational Leadership:
M.Ed., Ed.S. (Tier II Certification),
and Ed.D. **P12**

With multiple options to reach career objectives, students will be eligible for a variety of leadership positions in post-secondary education including, but not limited to, positions in various student affairs units, university administration, and college athletics administration.

Elementary & Early Childhood Education: M.Ed. **P12**

The M.Ed. in Elementary and Early Childhood Education is for certified and practicing P-5 teachers who want to increase their expertise in Elementary Education and improve their teaching practice. The program allows certified Elementary educators to earn their M.Ed. in 13 months while continuing their teaching career.

Instructional Technology:
M.Ed. and Ed.D. **P12**

This degree prepares candidates to effectively integrate technology into the classroom and to serve as technology coaches/facilitators in P-12 schools, utilize technology to support student learning, and to provide professional development and technology coaching for other educators.

Secondary and Middle Grades Education:
M.Ed., Ed.S., and Ed.D. **P12**

The M.Ed. in Secondary and Middle Grades Education is for teachers certified in middle (6-8) or secondary (6-12) English/language arts, history/social studies, mathematics, or the sciences. These content-focused, standards-based programs emphasize the development of evidence-based instructional leaders who know how to meet the needs of all learners and to use, produce, and disseminate educational research.

Special Education:
M.Ed., Ed.S. **P12**

The online M.Ed. program prepares candidates to serve students with disabilities in inclusive settings in P-12 schools. Upon completion of the program, graduates will be prepared to serve students with disabilities in a variety of teaching and leadership roles.

With the Online Education Specialist in Special Education degree, you will effectively serve students with a wide range of exceptionalities by improving the teaching and learning process. You will have the opportunity to pursue a Tier 1 Leadership Certification within the coursework which will prepare you to assume leadership positions in Special Education and Educational Leadership (i.e., Assistant Principal).

We offer endorsements to M.Ed. and MAT to Ed.S. to Doctorate in various specialized fields.



Teacher Leadership: M.Ed., Ed.D.

The M.Ed. with a major in Teacher Leadership program prepares teachers to plan and lead professional development, mentor other teachers, align curriculum, instruction, and assessment, model best teaching practices, analyze data and improve learning through data-informed decision-making, apply research-based approaches to instructional challenges, and collaborate with all stakeholders to improve student learning.

Master of Arts in Teaching: MAT **P12**

The Master of Arts in Teaching (MAT) degree leads to initial certification of well-qualified candidates. Course work emphasizes scholarly rigor through research-based practices and engagement in a variety of field-based projects as well as supervised clinical experiences. There are seven concentrations including Secondary English (6-12), Secondary Mathematics (6-12), Special Education (P-12), Teaching English to Speakers of Other Languages (TESOL; P-12), and Secondary Science (6-12) in Biology, Chemistry or Physics.

Teaching English for Speakers of Other Languages TESOL: M.Ed. **P12**

The Master's of Education with a major in Teaching English for Speakers of Other Languages degree is a fully online program that prepares teachers to be teacher-leaders in TESOL. This advanced program prepares teachers to educate students who are culturally and linguistically diverse through inclusive practices. Individuals majoring in TESOL receive the ESOL Endorsement after the first 2 semesters.



Curriculum & Instruction: Ed.S. **P12**

The exclusively online Curriculum and Instruction Educational Specialist (Ed.S.) degree develops expertise in theories and practices related to teaching and learning. You will learn about curriculum design and perspectives and instructional approaches and strategies, as well as become an expert in understanding how people learn in and out of schools. Graduates of the program go on to work as coaches, principals, superintendents, chairs, directors, as well as other positions in education.

Never Stop Learning...
DEGREE UP
at Kennesaw State University!

Doctoral Offerings

Business Administration, Ph.D.

The Ph.D. in Business Administration is an innovative doctoral program designed to prepare highly experienced professionals for teaching and research positions at AACSB accredited business schools or for advanced research positions in consulting, government or industry while maintaining your full-time job.



Computer Science, Ph.D.

The innovative Computer Science Ph.D. program blends the highest level of theory and practice in Computer Science, Information Technology and Software Engineering to solve research and real-world problems. The curriculum is designed to prepare you for a career as a cutting-edge researcher, an experienced educator or workforce professional who can meet current and projected market demands for technological advancements in computing.

Data Science and Analytics, Ph.D.

The Data Science and Analytics Doctorate program is creating the next generation of data science and analytics leaders. The curriculum includes emphasis on programming, statistical modeling, mathematical foundations, oral and written communication skills. Students will work directly with industry partners and researchers to solve real problems.

Interdisciplinary Engineering, Ph.D.

The Ph.D. in Interdisciplinary Engineering will challenge you to work across multiple engineering disciplines to gain both breadth of knowledge and depth in a particular field. You will gain well-rounded research proficiency in a specific subject area and secondary expertise in technological innovation.

International Conflict Management, Ph.D.

The Ph.D. in International Conflict Management degree is a full-time, interdisciplinary, in-residence program intended to help meet the global demand for scholar-practitioners who address the complex array of international conflict and security challenges. You will work to advance your empirically-based research through further development, recommendations and solutions.

Student Success

Kennesaw State University's Graduate College sets a remarkable example by going beyond traditional classroom education. The college's commitment to a holistic educational experience is underscored by its sponsorship of a diverse array of events that bring students together through learning, support, and preparation for the workforce. These initiatives not only enrich the academic journey of graduate students but also cultivate a strong sense of community, making KSU a place where academic excellence meets social engagement.

One of the hallmarks of KSU's graduate experience is its dedication to fostering research dissemination. Beyond the



academic realm, the Graduate College empowers students to showcase their work at conferences, competitions, and symposiums. This exposure not only enhances their visibility but also cultivates a culture of intellectual curiosity and collaboration across various disciplines.

The annual 3 Minute Thesis Competition (3MT), held during Graduate Student Appreciation Week, epitomizes this commitment. This challenging event demands participants to distill their complex research into succinct and

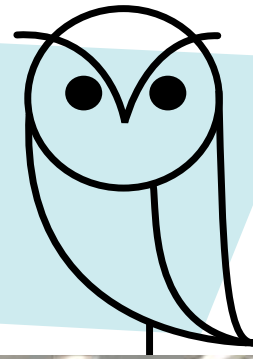




engaging presentations, emphasizing the importance of effective communication. The 3MT competition not only hones students' presentation skills but also provides a platform for them to share their groundbreaking research with a wider audience, fostering an environment of scholarly excellence.

Central to the graduate student experience are the thoughtfully designed student success centers, which serve as dynamic hubs of productivity and collaboration. These student lounges, equipped with modern facilities and comfortable seating, offer a serene environment for study, as well as an open arena for brainstorming sessions and group projects. They cater to the diverse needs of graduate students, providing spaces that enhance their learning journey and facilitate academic growth.

Recognizing that a well-rounded graduate student experience goes beyond academics, KSU hosts a range of social events each semester that breathe life into the campus. From sophisticated wine and cheese socials that stimulate intellectual conversations to practical seminars that equip students with essential skills for their academic journey, such as literature review for theses and dissertations, and lectures on time management and motivation.



These gatherings not only create memorable experiences but also encourage networking among students from different disciplines. The resulting connections often lead to interdisciplinary collaborations, enriching the overall academic experience and expanding students' horizons.

Kennesaw State University's commitment to a vibrant graduate student life underscores its dedication to holistic education. By creating spaces for intellectual exploration, fostering social connections, and promoting active engagement in research, the university ensures that its graduate students emerge as well-rounded individuals who are ready to make meaningful contributions to their respective fields.

The Graduate College stands as a testament to the university's commitment to providing an all-encompassing educational journey, empowering students for success in both their academic pursuits and future careers. As KSU continues to evolve, its Graduate College remains at the forefront of nurturing the next generation of scholars and professionals.

Clarice C. & Leland H. Bagwell College of Education

College of Architecture and Construction Management

College of Computing and Software Engineering

College of Engineering and Engineering Technology

College of Science and Mathematics

College of the Arts

Michael J. Coles College of Business

Norman J. Radow College of Humanities and Social Sciences

Wellstar College of Health and Human Sciences



**KENNESAW STATE
UNIVERSITY**
GRADUATE COLLEGE

3391 Town Point Dr NW
Suite 1700
Kennesaw, GA 30144
470-578-4377

**ksugrad@kennesaw.edu
graduate.kennesaw.edu**