

METRO ATLANTA QUALITY OF LIFE SURVEY

Submitted by The A. L. Burruss Institute of Public Service
and Research

Kennesaw State University

Introduction

In November 2009, the A.L. Burruss Institute of Public Service and Research at Kennesaw State University conducted telephone interviews with four hundred randomly selected adults eighteen years of age or older who reside in one of the counties that make up the core of the Metro Atlanta area (Clayton, Cobb, DeKalb, Fulton and Gwinnett). The telephone surveys were conducted by trained interviewers from the Institute's Survey Research Laboratory. At the conclusion of the survey, the responses were weighted to reflect the proper distribution of place of residence, gender and age among the respondents.

The respondents were asked to evaluate a number of factors related to the quality of life in their home areas. The following summary provides an insight into the respondents' perceptions about the desirability of their areas as places to live, raise families and grow old, as well as the quality of specific services (police protection, local schools, libraries, etc.) in their areas. Finally, the survey asked the respondents to evaluate the economic situation in their areas including the availability of employment opportunities. The results below highlight any differences that might exist between residents' perceptions across the counties included in the survey. Differences across individual question items are examined first, followed by individual county profiles.

Kennesaw State University
1000 Chastain Road
Kennesaw, Georgia 30144-5591

770-423-6464
770-423-6395 (FAX)

www.kennesaw.edu/burruss_inst



General Evaluations of Respondent's Area

Rating Area as a Place to Live

- Three-fourths (78%) of all respondents indicated their area is a *very good* or *good* place to live.
- *At least* three-fourths of the respondents in Cobb, DeKalb, Fulton and Gwinnett counties indicated their area is a *very good* or *good* place to live.
- A bare majority (53%) of the respondents from Clayton County responded in a similar fashion. Forty-two percent (42%) believe it is only a *fair* place to live, while 5% said their area is a *poor* place to live.

Place to Live	Clayton	Cobb	DeKalb	Fulton	Gwinnett	All
% <i>Very good</i> or <i>Good</i>	52.6%	80.7%	78.5%	78.8%	86.6%	78.3%
% <i>Very poor</i> or <i>Poor</i>	5.2%	4.7%	6.4%	2.9%	0.0%	3.6%

Rating Area as a Place to Raise a Family

- Over three-fourths (80%) of all respondents metro-wide feel their area is a *very good* or *good* place to raise a family.
- Clayton County respondents are less enthusiastic than other metro respondents about the suitability of their area as a place to raise children. Just over one-half (55%) of the Clayton County respondents indicated their area is a *very good* or *good* place to raise a family. Again, three-fourths of the respondents in the other counties responded in a generally positive fashion.

Place to Raise a Family	Clayton	Cobb	DeKalb	Fulton	Gwinnett	All
% <i>Very good</i> or <i>Good</i>	55.3%	84.1%	74.4%	82.3%	89.0%	80.0%
% <i>Very poor</i> or <i>Poor</i>	17.5%	1.8%	13.2%	7.2%	2.4%	7.2%

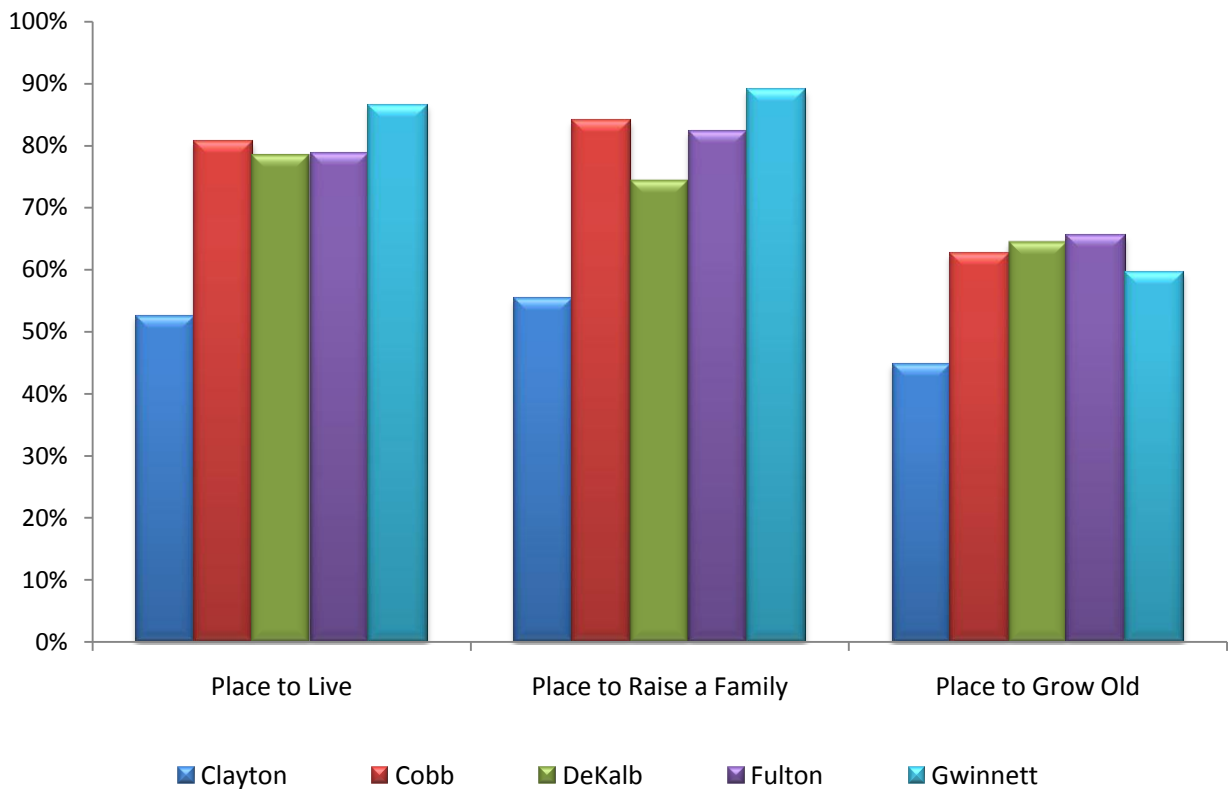
Rating Area as a Place to Grow Old

- Six out of every ten respondents (62%) feel their area is a *very good* or *good* place to grow old.
- Clayton County residents are also more pessimistic in regards to their feelings about the suitability of their area as a place to grow old, although all counties witnessed a decline in positive perceptions compared to the results from the previous two items.

- Less than one-half (45%) of the respondents from Clayton County indicated their area is a *very good* or *good* place to grow old. Approximately sixty percent of the respondents in each of the other counties responded in a similar fashion.

Place to Grow Old	Clayton	Cobb	DeKalb	Fulton	Gwinnett	All
% <i>Very good</i> or <i>Good</i>	44.8%	62.6%	64.5%	65.6%	59.7%	61.6%
% <i>Very poor</i> or <i>Poor</i>	27.2%	9.8%	18.0%	10.8%	9.9%	13.4%

Percent Responding Very Good or Good



Evaluations of Specific Services

Traffic Flow

- Perceptions of traffic flow are marginal at best among respondents in each of the counties included in the survey. Less than one-third of all respondents believe traffic flow in their area is *very good* or *good*. Percentages across individual counties fall into a very narrow range between 25% - 36%.
- Traffic flow seem to be most unbearable in Gwinnett County, where 43% of all respondents indicated flow is either *poor* or *very poor*.

Traffic Flow	Clayton	Cobb	DeKalb	Fulton	Gwinnett	All
% <i>Very good</i> or <i>Good</i>	33.3%	36.1%	28.2%	25.2%	32.1%	30.2%
% <i>Very poor</i> or <i>Poor</i>	26.2%	23.1%	34.0%	25.8%	33.0%	30.4%

Road Maintenance

- Perceptions of the physical condition of local streets and roads were generally good across the metro area. Almost two-thirds (65%) of all respondents believe the condition of their local roads and streets is either *good* or *very good*.
- Fulton (57%) and DeKalb (61%) counties lag slightly in this area; Cobb and Gwinnett counties (72% each) are slightly better than the metro area as a whole.

Road Maintenance	Clayton	Cobb	DeKalb	Fulton	Gwinnett	All
% <i>Very good</i> or <i>Good</i>	65.8%	72.3%	60.8%	57.2%	71.6%	64.8%
% <i>Very poor</i> or <i>Poor</i>	11.7%	8.4%	12.8%	16.8%	3.8%	11.2%

Police Protection

- Three-fourths (75%) of all respondents believe police protection in their area is *good* or *very good*.
- Again, Clayton County lags behind the other metro counties in regards to perceptions of police protection. A bare majority (53%) of the respondents in Clayton believe police protection in their area is either *good* or *very good*. Three-fourths of the respondents in other metro counties responded in a similar fashion.

Police Protection	Clayton	Cobb	DeKalb	Fulton	Gwinnett	All
% <i>Very good</i> or <i>Good</i>	53.8%	78.3%	77.3%	73.4%	84.0%	75.4%
% <i>Very poor</i> or <i>Poor</i>	3.6%	11.9%	12.7%	6.2%	6.5%	8.4%

Quality of Schools

- Sixty percent (60%) of respondents feel their local schools are *good* or *very good*.
- Not surprisingly, Clayton County falls far behind other localities in regards to positive perceptions of the quality of local schools. Fewer than one-in-four respondents (24%) said the schools in Clayton are *good* or *very good*. Clayton County has suffered in recent years from numerous controversies surrounding the school system including a highly publicized loss of accreditation, which was only recently reinstated.
- A bare majority of respondents (51%) in Fulton County rated their local schools as *good* or *very good*.
- Almost eight out of every ten respondents (79%) in Gwinnett County believe their local schools are *good* or *very good*.

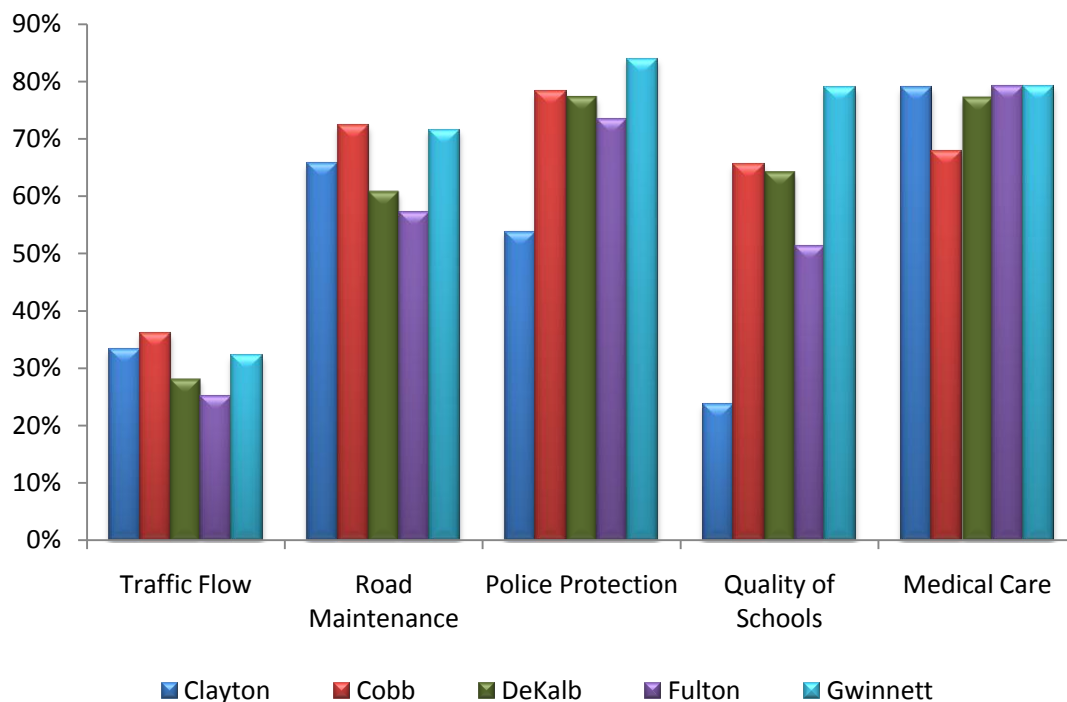
Quality of Schools	Clayton	Cobb	DeKalb	Fulton	Gwinnett	All
% <i>Very good</i> or <i>Good</i>	23.7%	65.5%	64.2%	51.3%	79.0%	59.7%
% <i>Very poor</i> or <i>Poor</i>	18.7%	5.6%	8.3%	2.2%	1.2%	5.5%

Availability of Medical Care

- Perceptions of the availability of medical care are generally high among respondents in all counties. At least two-thirds of the respondents in all counties perceive the availability of medical care in their area as *good* or *very good*.
- Cobb County lags slightly in this area. Just sixty-eight percent (68%) of the respondents in Cobb said availability of medical care is either *good* or *very good*.

Medical Care	Clayton	Cobb	DeKalb	Fulton	Gwinnett	All
% <i>Very good</i> or <i>Good</i>	79.0%	67.9%	77.2%	75.6%	79.3%	75.4%
% <i>Very poor</i> or <i>Poor</i>	6.5%	7.3%	5.8%	11.4%	6.9%	8.1%

Percent Responding Very Good or Good



Trash and Litter Control

- Respondents in all counties have generally good perceptions of trash and litter control in their areas. Over three-fourths (77%) of all respondents believe performance in this area is either *good* or *very good*.
- Gwinnett County received particularly high marks from its respondents in regards to the control of trash and litter. Eighty-four percent (84%) of the respondents in the county gave generally positive evaluations on this issue.

Trash and Litter Control	Clayton	Cobb	DeKalb	Fulton	Gwinnett	All
% Very good or Good	71.1%	77.4%	72.2%	76.3%	84.2%	76.8%
% Very poor or Poor	6.4%	3.5%	6.9%	8.3%	4.5%	5.5%

Drainage and Flood Control

- Almost two-thirds (63%) of all respondents think storm water drainage and flood control in their area is either *good* or *very good*.
- Cobb County falls behind its metro area counterparts in regards to drainage and flood control. Less than one-half (46%) of Cobb County respondents believe the county enjoys *good* or *very good* storm water drainage and flood control. It should

be noted, however, that the survey was conducted immediately following an extended period of very heavy rain in the metro area which caused widespread local flooding. Areas of Cobb County were particularly hard hit and the associated problems received significant coverage in the newspapers and local television news.

Drainage and Flood Control	Clayton	Cobb	DeKalb	Fulton	Gwinnett	All
% Very good or Good	71.1%	46.5%	67.5%	59.6%	78.0%	63.3%
% Very poor or Poor	7.6%	29.7%	13.4%	16.4%	8.1%	16.4%

Library Services

- Again, perceptions of the quality of library services are generally good across the entire metro area. Just over two-thirds (69%) of all respondents believe library services in their area are either *good* or *very good*.
- Fulton County (60%) lags slightly in this area, while Gwinnett County (83%) stands out well above the other metro localities.

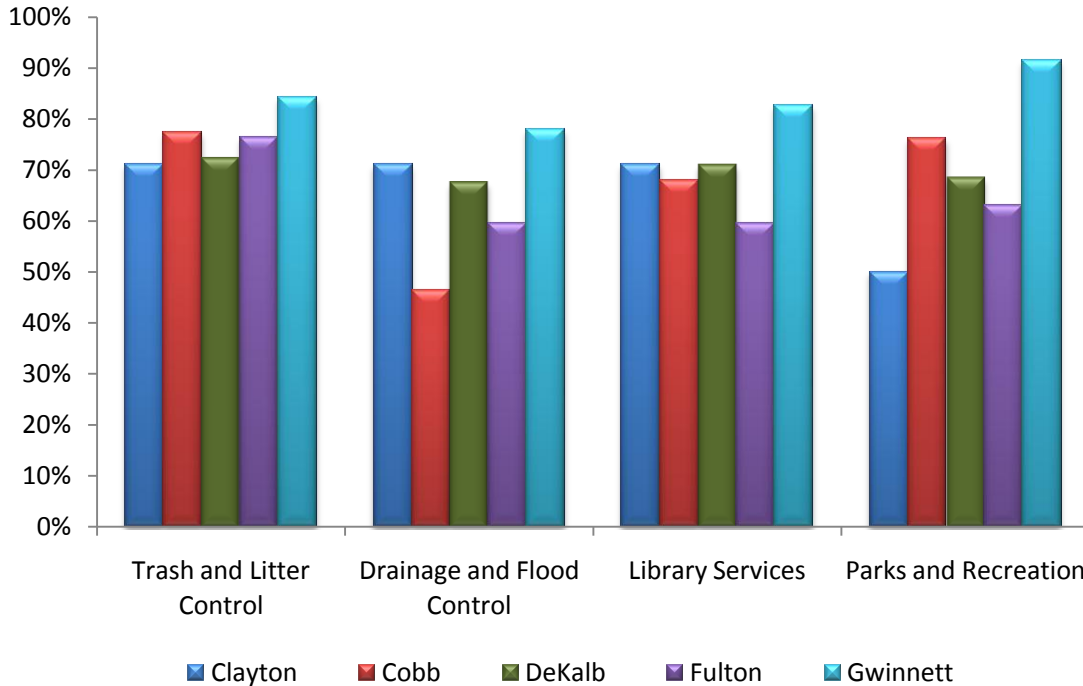
Library Services	Clayton	Cobb	DeKalb	Fulton	Gwinnett	All
% Very good or Good	71.0%	67.8%	70.9%	59.6%	82.7%	69.3%
% Very poor or Poor	5.1%	1.0%	1.0%	3.2%	3.5%	2.6%

Parks and Recreational Facilities

- Over two-thirds (71%) of all respondents think park and recreational resources in their area are either *very good* or *good*.
- Clayton County fall significantly below the metro wide average in the area of parks and recreational facilities. Only one-half (50%) of the respondents in Clayton feel the quality of their parks and recreational facilities is either *good* or *very good*.
- Gwinnett County is particularly strong in this area. Over nine out of every ten (92%) Gwinnett County respondents believe the county's parks and recreational resources are *good* or *very good*. Gwinnett County has a noted commitment to strong long-range planning processes in the area of parks and recreation, and their efforts have paid off with a fine system of recreational resources throughout the county.

Parks and Recreation	Clayton	Cobb	DeKalb	Fulton	Gwinnett	All
% Very good or Good	50.0%	76.2%	68.4%	63.0%	91.5%	71.4%
% Very poor or Poor	17.3%	3.9%	12.6%	6.7%	2.4%	7.4

Percent Responding Very Good or Good



Economic Health

Employment Opportunities

- Overall, perceptions of employment opportunities in the respondents' areas are gloomy across the entire metro area, although there is considerable variation across counties. Barely one-fifth (23%) of all respondents believe employment opportunities in their area are either *good* or *very good*.
- None of the respondents from Clayton County believe job opportunities in their area are *very good*; only eleven percent (11%) said these opportunities are *good*. Almost one-in-five respondents (16%) in Clayton feel employment opportunities are *very poor*.
- The outlook for employment opportunities is equally pessimistic among respondents in Cobb, DeKalb and Gwinnett counties, where roughly one-in-five respondents believe these opportunities are either *good* or *very good*.
- Attitudes concerning employment opportunities are relatively high in Fulton County, where more than one-third (35%) of the respondents think job opportunities are

good or very good. Fulton County has the only group of respondents that exceeded the metro wide average on this issue.

- It should be noted that a significant number of respondents (20%) failed to offer an opinion on this issue. This percentage was particularly high in DeKalb County (31%).

Employment Opportunities	Clayton	Cobb	DeKalb	Fulton	Gwinnett	All
% <i>Very good or Good</i>	10.8%	19.3%	16.7%	34.5%	20.8%	22.8%
% <i>Very poor or Poor</i>	56.8%	32.4%	25.2%	25.7%	38.4%	34.5%

Is Economic Situation Getting Better or Worse?

- One out of every four respondents (25%) across the metro area believes the economic situation in their area is *getting worse*. Only ten percent (10%) believe it is *getting better*.
- Once again, respondents from Clayton County are far more pessimistic about the economic situation in their area than are respondents in the other four counties. Almost one-half (47%) of Clayton County residents believe conditions in their area are *getting worse*.

Economic Situation Getting Better or Worse in Area?	Clayton	Cobb	DeKalb	Fulton	Gwinnett	All
% <i>Getting worse</i>	47.4%	26.5%	20.5%	19.5%	24.7%	24.9%

Future Outlook

Will Area Be A Better or Worse Place to Live in Five Years?

- Respondents across the metro area are more optimistic about the conditions in their area five years from now. Four out of every ten respondents (41%) believe their area will be a *better place to live* in five years. An almost equal number (39%) do not anticipate any change in the desirability of their area in five years. Only twelve percent (12%) believe their area will be a *worse place to live*.
- A majority of respondents (56%) in Cobb County do not anticipate much of a change in their area over the next five years. Three out of every ten respondents (31%) believe their area will be a *better place to live*.

- Respondents in Fulton County are particularly optimistic about the future of their area. Over one-half (55%) of these respondents think their area will be a *better place to live* in five years.
- Respondents in Clayton County are less optimistic than their counterparts across the metro area. Three out of every ten respondents (31%) from Clayton County believe their area will be a *worse place to live* in five years. A slightly larger number (36%) believe their area will be a *better place to live*.

Better or Worse Place to Live in 5 Yrs?	Clayton	Cobb	DeKalb	Fulton	Gwinnett	All
% Worse Place to Live	30.8%	6.1%	15.0%	8.5%	12.3%	12.3%
% Better Place to Live	35.9%	30.5%	38.8%	55.1%	35.8%	41.0%

Will Respondent Be Moving in Next Two Years?

- One-in-five respondents (19%) metro-wide indicated it is *very likely* they will move within the next two years. An almost equal number (20%) said it is *somewhat likely* they will be moving within the next two years.
- Respondents in Clayton and DeKalb counties indicated they are more likely to move sometime in the next two years. One-third (32%) of the respondents in Clayton County said they are *very likely* to move in the next two years; an almost equal number (29%) in DeKalb County responded in a similar fashion.

Will R Move Within Next 2 Yrs?	Clayton	Cobb	DeKalb	Fulton	Gwinnett	All
% Very Likely	31.6%	19.3%	29.1%	9.2%	18.3%	19.2%
% Somewhat Likely	15.8%	9.6%	19.0%	31.9%	15.9%	20.0%

Where Will Respondent Move To?

- Respondents who indicated they are **at least** somewhat likely to move in the next two years were asked if they most likely would move to *another residence in the same area where they currently live; another area in the same county where they currently live; a different county in the metro Atlanta area; another area in Georgia not in the Atlanta area, or: another state*. Very few respondents (4%) indicated they would move to *another area in Georgia outside of the Atlanta area*. The remaining respondents who

are more likely to move are fairly evenly divided across the other four options. There are some interesting differences across counties, however.

- Two-thirds (67%) of the likely movers in Clayton County said they will probably move to *a different county in the Atlanta region*.
- A majority (52%) of the likely movers in Cobb County indicated they would probably move to *another residence in the same general area where they currently live*. Slightly more than one-in-four (28%) said they would move *out-of-state*.
- Likely movers in DeKalb County also are more likely (44%) to *stay in their current areas*.
- Over one-third (39%) of the likely movers in Fulton County would move to *another area in Fulton County*. Over one-fourth (28%) are most likely to move *out-of-state*.
- Likely movers in Gwinnett County mostly closely reflect the overall pattern of metro-wide responses, although they are more likely (14%) than their counterparts in other parts of the metro area to move to *an area in Georgia outside of Atlanta*.

Where Will R Move?	Clayton	Cobb	DeKalb	Fulton	Gwinnett	All
<i>Another residence in the same area</i>	0%	52.0%	44.4%	8.2%	28.6%	26.3%
<i>Another residence in the same county</i>	11.1%	12.0%	25.0%	38.8%	21.4%	25.0%
<i>A different county in the Atlanta region</i>	66.7%	0%	16.7%	22.4%	14.3%	21.2%
<i>Another area in Georgia not in the Atlanta region</i>	5.6%	4.0%	0%	0%	14.3%	3.8%
<i>Another state</i>	11.1%	28.0%	8.3%	28.6%	21.4%	20.5%
<i>Not sure</i>	5.6%	4.0%	5.6%	2.0%	0%	3.2%

COUNTY PROFILES

CLAYTON COUNTY

Issue	Clayton Respondents	All Respondents	Comments
Rate area as place to live (% Very good or Good)	52.6%	78.3%	Far lower than metro-wide results.
Rate area as place to live (% Very poor or Poor)	5.2%	3.6%	
Rate area as a place to raise family (% Very good or Good)	55.3%	80.0%	Far lower than metro-wide results.
Rate area as a place to raise family (% Very poor or Poor)	17.5%	7.2%	
Rate area as a place to grow old (% Very good or Good)	44.8%	61.6%	Significantly lower than metro-wide results.
Rate area as a place to grow old (% Very poor or Poor)	27.2%	13.4%	
Traffic Flow (% Very good or Good)	33.3%	30.2%	Typical of metro-wide results.
Traffic Flow (% Very poor or Poor)	26.2%	30.4%	
Police Protection (% Very good or Good)	53.8%	75.4%	Far lower than metro-wide results.
Police Protection (% Very poor or Poor)	3.6%	8.4%	
Local schools (% Very good or Good)	23.7%	59.7%	Far lower than metro-wide results. Lowest score among all counties.
Local schools (% Very poor or Poor)	18.7%	5.5%	
Availability of medical care (% Very good or Good)	79.0%	75.4%	Typical of metro-wide results.
Availability of medical care (% Very poor or Poor)	7.5%	8.1%	
Trash and litter control (% Very good or Good)	71.1%	76.8%	Typical of metro-wide results.
Trash and litter control (% Very poor or Poor)	6.4%	5.5%	
Drainage and flood control (% Very good or Good)	71.1%	63.3%	Slightly better than metro-wide results.
Drainage and flood control (% Very poor or Poor)	7.6%	16.4%	

CLAYTON COUNTY - CONTINUED

Issue	Clayton Respondents	All Respondents	Comments
Road maintenance <i>(% Very good or Good)</i>	65.8%	64.8%	Typical of metro-wide results.
Road maintenance <i>(% Very poor or Poor)</i>	11.7%	11.2%	
Library Services <i>(% Very good or Good)</i>	71.0%	69.3%	Typical of metro-wide results.
Library Services <i>(% Very poor or Poor)</i>	5.1%	2.6%	
Parks and Recreational Facilities <i>(% Very good or Good)</i>	50.0%	71.4%	Significantly lower than metro-wide results.
Parks and Recreational Facilities <i>(% Very poor or Poor)</i>	17.3%	7.4%	
Employment opportunities <i>(% Very good or Good)</i>	10.8%	22.8%	Significantly lower than metro-wide results. Lowest score among all counties.
Employment opportunities <i>(% Very poor or Poor)</i>	56.8%	36.5%	
Economic Situation in Area Getting Better or Worse? (% Getting Worse)	47.4%	24.9%	Far worse than metro-wide results. Worst score among all counties.
Better or Worse Place to Live in Five Years? (% Worse)	30.8%	12.3%	Significantly worse than metro-wide results. Worst score among all counties.
Better or Worse Place to Live in Five Years? (% Better)	35.9%	41.0%	Typical of metro-wide results.
Will R Move Next Two Years? (% Very/Somewhat Likely)	47.4%	39.2%	Higher than metro-wide results; second only to DeKalb. Most (68%) say they would move to another county in Atlanta area.

COBB COUNTY

Issue	Cobb County	All Respondents	Comments
Rate area as place to live <i>(% Very good or Good)</i>	80.7%	78.3%	Typical of metro-wide results.
Rate area as place to live <i>(% Very poor or Poor)</i>	4.7%	3.6%	
Rate area as a place to raise family <i>(% Very good or Good)</i>	84.1%	80.0%	Typical of metro-wide results.
Rate area as a place to raise family <i>(% Very poor or Poor)</i>	1.8%	7.2%	
Rate area as a place to grow old <i>(% Very good or Good)</i>	62.6%	61.6%	Typical of metro-wide results.
Rate area as a place to grow old <i>(% Very poor or Poor)</i>	9.8%	13.4%	
Traffic Flow <i>(% Very good or Good)</i>	36.1%	30.2%	Slightly higher than metro-wide results. Highest score among the counties.
Traffic Flow <i>(% Very poor or Poor)</i>	23.1%	30.4%	
Police Protection <i>(% Very good or Good)</i>	78.3%	75.4%	Typical of metro-wide results.
Police Protection <i>(% Very poor or Poor)</i>	11.9%	8.4%	
Local schools <i>(% Very good or Good)</i>	65.5%	59.7%	Typical of metro-wide results. In middle of pack.
Local schools <i>(% Very poor or Poor)</i>	5.6%	5.5%	
Availability of medical care <i>(% Very good or Good)</i>	67.9%	75.4%	Slightly lower than metro-wide results. Lowest score among counties.
Availability of medical care <i>(% Very poor or Poor)</i>	7.3%	8.1%	
Trash and litter control <i>(% Very good or Good)</i>	77.4%	76.8%	Typical of metro-wide results.
Trash and litter control <i>(% Very poor or Poor)</i>	3.5%	5.5%	
Drainage and flood control <i>(% Very good or Good)</i>	46.5%	63.3%	Significantly lower than metro-wide results. Lowest score among counties.
Drainage and flood control <i>(% Very poor or Poor)</i>	29.7%	16.4%	

COBB COUNTY – CONTINUED

Issue	Cobb County	All Respondents	Comments
Road maintenance <i>(% Very good or Good)</i>	72.3%	64.8%	Slightly higher than metro-wide results. Highest score among counties.
Road maintenance <i>(% Very poor or Poor)</i>	8.4%	11.2%	
Library Services <i>(% Very good or Good)</i>	67.8%	69.3%	Typical of metro-wide results.
Library Services <i>(% Very poor or Poor)</i>	1.0%	2.6%	
Parks and Recreational Facilities <i>(% Very good or Good)</i>	76.2%	71.4%	Typical of metro-wide results. Trails only Gwinnett.
Parks and Recreational Facilities <i>(% Very poor or Poor)</i>	3.9%	7.4%	
Employment opportunities <i>(% Very good or Good)</i>	19.3%	22.8%	Typical of metro-wide results.
Employment opportunities <i>(% Very poor or Poor)</i>	32.2%	36.5%	
Economic Situation in Area Getting Better or Worse? (% Getting Worse)	26.5%	24.9%	Typical of metro-wide results.
Better or Worse Place to Live in Five Years? (% Worse)	6.1%	12.3%	Typical of metro-wide results. Lowest score among counties.
Better or Worse Place to Live in Five Years? (% Better)	30.5%	41.0%	Significantly below metro-wide results. Lowest score among counties.
Will R Move Next Two Years? (% Very/Somewhat Likely)	28.9%	39.2%	Significantly lower than metro-wide results. Lowest score among counties. Most would stay in Cobb.

DEKALB COUNTY

Issue	DeKalb County	All Respondents	Comments
Rate area as place to live <i>(% Very good or Good)</i>	78.5%	78.3%	Typical of metro-wide results.
Rate area as place to live <i>(% Very poor or Poor)</i>	6.4%	3.6%	
Rate area as a place to raise family <i>(% Very good or Good)</i>	74.4%	80.0%	Good, but lags behind Fulton, Cobb and Gwinnett.
Rate area as a place to raise family <i>(% Very poor or Poor)</i>	13.2%	7.2%	
Rate area as a place to grow old <i>(% Very good or Good)</i>	64.5%	61.6%	Typical of metro-wide results.
Rate area as a place to grow old <i>(% Very poor or Poor)</i>	18.0%	13.4%	
Traffic Flow <i>(% Very good or Good)</i>	28.2%	30.2%	Typical of metro-wide results.
Traffic Flow <i>(% Very poor or Poor)</i>	34.0%	30.4%	
Police Protection <i>(% Very good or Good)</i>	77.3%	75.4%	Typical of metro-wide results.
Police Protection <i>(% Very poor or Poor)</i>	12.7%	8.4%	
Local schools <i>(% Very good or Good)</i>	64.2%	59.7%	Typical of metro-wide results. Middle of the pack.
Local schools <i>(% Very poor or Poor)</i>	8.3%	5.5%	
Availability of medical care <i>(% Very good or Good)</i>	77.2%	75.4%	Typical of metro-wide results.
Availability of medical care <i>(% Very poor or Poor)</i>	5.8%	8.1%	
Trash and litter control <i>(% Very good or Good)</i>	72.2%	76.8%	Typical of metro-wide results.
Trash and litter control <i>(% Very poor or Poor)</i>	6.9%	5.5%	
Drainage and flood control <i>(% Very good or Good)</i>	67.5%	63.3%	Typical of metro-wide results.
Drainage and flood control <i>(% Very poor or Poor)</i>	13.4%	16.4%	
Road maintenance <i>(% Very good or Good)</i>	60.8%	64.8%	Typical of metro-wide results, but only ranks ahead of Fulton.
Road maintenance <i>(% Very poor or Poor)</i>	12.8%	11.2%	

DEKALB COUNTY – CONTINUED

Issue	DEKALB County	All Respondents	Comments
Library Services (% Very good or Good)	70.9%	69.3%	Typical of metro-wide results.
Library Services (% Very poor or Poor)	1.0%	2.6%	
Parks and Recreational Facilities (% Very good or Good)	68.4%	71.4%	Typical of metro-wide results. Well behind Gwinnett, but well ahead of Clayton.
Parks and Recreational Facilities (% Very poor or Poor)	12.6%	7.4%	
Employment opportunities (% Very good or Good)	16.7%	22.8%	Typical of metro-wide results, but ranks ahead of Clayton only.
Employment opportunities (% Very poor or Poor)	35.2%	36.5%	
Economic Situation in Area Getting Better or Worse? (% Getting Worse)	20.5%	24.9%	Typical of metro-wide results.
Better or Worse Place to Live in Five Years? (% Worse)	15.0%	12.3%	Typical of metro-wide results, but ranks ahead of Clayton only.
Better or Worse Place to Live in Five Years? (% Better)	38.8%	41.0%	Typical of metro-wide results. Only Fulton is more optimistic.
Will R Move Next Two Years? (% Very/Somewhat Likely)	48.1%	39.2%	Highest percentage in metro area, just ahead of Clayton. Most (69%) said they would stay in DeKalb.

FULTON COUNTY

Issue	Fulton County	All Respondents	Comments
Rate area as place to live (% Very good or Good)	78.8%	78.3%	Typical of metro-wide results.
Rate area as place to live (% Very poor or Poor)	2.9%	3.6%	
Rate area as a place to raise family (% Very good or Good)	82.3%	80.0%	Typical of metro-wide results.
Rate area as a place to raise family (% Very poor or Poor)	7.2%	7.2%	
Rate area as a place to grow old (% Very good or Good)	65.6%	61.6%	Best score among all counties, but not significantly higher than DeKalb, Cobb or Gwinnett.
Rate area as a place to grow old (% Very poor or Poor)	10.8%	13.4%	
Traffic Flow (% Very good or Good)	25.2%	30.2%	Lowest score among all counties, but overall range of scores is very narrow.
Traffic Flow (% Very poor or Poor)	25.8%	30.4%	
Police Protection (% Very good or Good)	73.4%	75.4%	Typical of metro-wide results.
Police Protection (% Very poor or Poor)	6.2%	8.4%	
Local schools (% Very good or Good)	51.3%	59.7%	Significantly lower than Gwinnett, Cobb and DeKalb; better than Clayton.
Local schools (% Very poor or Poor)	2.2%	5.5%	
Availability of medical care (% Very good or Good)	75.6%	75.4%	Typical of metro-wide results.
Availability of medical care (% Very poor or Poor)	11.4%	8.1%	
Trash and litter control (% Very good or Good)	76.3%	76.8%	Typical of metro-wide results.
Trash and litter control (% Very poor or Poor)	8.3%	5.5%	
Drainage and flood control (% Very good or Good)	59.6%	63.3%	Significantly higher than Cobb; lower than other counties however.
Drainage and flood control (% Very poor or Poor)	16.4%	16.4%	

FULTON COUNTY - CONTINUED

Issue	Fulton County	All Respondents	Comments
Road maintenance <i>(% Very good or Good)</i>	57.2%	64.8%	Lowest score among all counties.
Road maintenance <i>(% Very poor or Poor)</i>	16.8%	11.2%	
Library Services <i>(% Very good or Good)</i>	59.6%	69.3%	Lowest score among all counties.
Library Services <i>(% Very poor or Poor)</i>	3.2%	2.6%	
Parks and Recreational Facilities <i>(% Very good or Good)</i>	63.0%	71.4%	Higher than Clayton; significantly lower than Cobb and Gwinnett.
Parks and Recreational Facilities <i>(% Very poor or Poor)</i>	6.7%	7.4%	
Employment opportunities <i>(% Very good or Good)</i>	34.5%	22.8%	Significantly better than scores for other counties; Gwinnett County was second at 21%.
Employment opportunities <i>(% Very poor or Poor)</i>	25.7%	36.5%	
Economic Situation in Area Getting Better or Worse? (% Getting Worse)	19.5%	24.9%	Lowest (best) score, but not significantly better than Cobb, DeKalb and Gwinnett. Much better than Clayton.
Better or Worse Place to Live in Five Years? (% Worse)	8.5%	12.3%	Typical of metro-wide results. Clayton is the outlier on this issue.
Better or Worse Place to Live in Five Years? (% Better)	55.1%	41.0%	Significantly better than other counties.
Will R Move Next Two Years? (% Very/Somewhat Likely)	41.1%	39.2%	Typical of metro-wide results.

GWINNETT COUNTY

Issue	Gwinnett County	All Respondents	Comments
Rate area as place to live (% Very good or Good)	86.6%	78.3%	Best score among all counties, but only slightly better than Cobb, DeKalb and Fulton.
Rate area as place to live (% Very poor or Poor)	0.0%	3.6%	
Rate area as a place to raise family (% Very good or Good)	89.0%	80.0%	Best score among all counties.
Rate area as a place to raise family (% Very poor or Poor)	2.4%	7.2%	
Rate area as a place to grow old (% Very good or Good)	59.7%	61.6%	Typical of metro-wide results.
Rate area as a place to grow old (% Very poor or Poor)	9.9%	13.4%	
Traffic Flow (% Very good or Good)	32.1%	30.2%	Typical of metro-wide results.
Traffic Flow (% Very poor or Poor)	43.0%	30.4%	
Police Protection (% Very good or Good)	84.0%	75.4%	Best score among all counties.
Police Protection (% Very poor or Poor)	6.5%	8.4%	
Local schools (% Very good or Good)	79.0%	59.7%	Significantly better than other counties.
Local schools (% Very poor or Poor)	1.2%	5.5%	
Availability of medical care (% Very good or Good)	79.3%	75.4%	Typical of metro-wide results.
Availability of medical care (% Very poor or Poor)	6.9%	8.1%	
Trash and litter control (% Very good or Good)	84.2%	76.8%	Best score among all counties.
Trash and litter control (% Very poor or Poor)	4.5%	5.5%	
Drainage and flood control (% Very good or Good)	78.0%	63.3%	Significantly better than other counties.
Drainage and flood control (% Very poor or Poor)	10.1%	16.4%	
Road maintenance (% Very good or Good)	71.6%	64.8%	Slightly better than metro-wide results.
Road maintenance (% Very poor or Poor)	3.8%	11.2%	

GWINNETT COUNTY - CONTINUED

Issue	Gwinnett County	All Respondents	Comments
Library Services (% Very good or Good)	82.7%	69.3%	Significantly better than other counties.
Library Services (% Very poor or Poor)	3.5%	2.6%	
Parks and Recreational Facilities (% Very good or Good)	91.5%	71.4%	Far better than other counties.
Parks and Recreational Facilities (% Very poor or Poor)	2.4%	7.4%	
Employment opportunities (% Very good or Good)	20.8%	22.8%	Typical of metro-wide results.
Employment opportunities (% Very poor or Poor)	38.4%	36.5%	
Economic Situation in Area Getting Better or Worse? (% Getting Worse)	24.7%	24.9%	Typical of metro-wide results.
Better or Worse Place to Live in Five Years? (% Worse)	12.3%	12.3%	Typical of metro-wide results.
Better or Worse Place to Live in Five Years? (% Better)	35.8%	41.0%	Typical of metro-wide results.
Will R Move Next Two Years? (% Very/Somewhat Likely)	34.2%	39.2%	Slightly better than metro-wide results. One-half (50%) would stay in Gwinnett if they moved.