

## Happy 4th of July!

**FREEDOM:** The condition of being free of restraints

Only our individual faith in **freedom** can keep us free. ~ Dwight D. Eisenhower

All the great things are simple, and many can be expressed in a single word: **freedom**; justice; honor; duty; mercy; hope. ~ Sir Winston Churchill



Congratulations to Abi Adeyi, Glenda (Kaye) Anderson, Teresa Banker, Janice Barrow, Stephen Braden, Sarah Brooks, Victor Clincy, Romona Earl, Kim Frazier, Vanette Gravitt, John David Johnson, Freeha Kahn, Glenn La

Vine, Rhonda Nemeth, Kendra Nolley, Deborah Sauder, Darlene Schlott, Jesse A Schwartz, Karen Stark, John Turner, Carlton Usher, and Ralph Wilson for being accepted into the **2005 Excel Program** scheduled for May 23—27, 2005. Thanks to all who expressed interest in this year's program.

### CAREing Corner

*The Center for Active Retirement Education (CARE)*

Check out the Programs for Active Retirees and Aging Network Professionals

[Examining the New Longevity: Health in Old Age](#)

June 2nd, 2005

[Meaningful Aging Workshop](#)

June 9th, 2005

[Ethical Dilemmas and Aging: From False Hope to Faith in the Future](#)

August 25th, 2005

Register at [www.kennesaw.edu/CAREing](http://www.kennesaw.edu/CAREing)

## Free lunch, anyone?

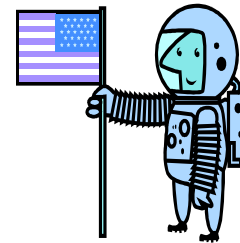
Thank you to all those who participated in our “**Name this Newsletter contest.**” Unfortunately, we did not receive enough entries to make a fair decision and so the search continues! Please get those creative juices flowing! **STOP** reading about the solicitation for a name and **START** submitting your suggestions to [mdavis2@kennesaw.edu](mailto:mdavis2@kennesaw.edu). Be sure to put “**Name this Newsletter**” as the subject.

The KSU employee who comes up with the title selected for this newsletter will win a \$15 gift certificate from Macalister's. **A selection will be made for the next quarterly newsletter.** Remember the winner will be listed with their picture and winning entry in our next newsletter. Just name this newsletter and lunch is on us!

**Get those brain cells pumping! We are counting on YOU!**

### TRIVIA QUESTION:

*What major event occurred July 20th, 1969?*



**Answer:**

**man first landed on the moon!**

And, in honor of this “*giant leap for mankind*”, the Center for University Learning invites you to stop by for some of Linda's **out of this world** red, white, and blue cupcakes!

**July 20, 2005 at 12pm-2pm**

**Center for University Learning Library**  
**We look forward to seeing you there!**

The Wellness Center wants you to...

## Be S.A.F.E.



**Self-defense Awareness & Familiarization Exchange**  
*during the Summer!*

### Did you know :

- that violent crimes are crimes of opportunity.
- that when you remove the element of opportunity, you reduce the risk of attack.
- that 90% of self-defense is mental preparedness; the other 10% is physical.

The Center for University Learning, in collaboration with the Wellness Center and the KSU Police Department, will be offering S.A.F.E, a 2-hr. course for faculty and staff, designed by the National Self-Defense Institute. S.A.F.E. will provide participants with great crime prevention information and resources as well as a pre-basic familiarization with physical training methods. Please see the summer catalog for further information about this class!

**For more safe information**  
**contact the Wellness Center at**

**[www.kennesaw.edu/col\\_hhs/wellness](http://www.kennesaw.edu/col_hhs/wellness)**



### Farewell, Dr. Stillion!

The charter Director of the CAREing Center and current Executive Director of the Institute for Leadership, Ethics & Character, Dr. Judith Stillion, will be retiring at the end of this fiscal year. As you know, Dr. Stillion's years of service to KSU have truly been instrumental to the growth and success of the University. Dr. Stillion will be relocating to her beautiful beach home in Florida. Dr. Stillion, we wish you the best in your future endeavors. You will truly be missed by your staff and all individuals that had the distinct pleasure of working with you. **Have a very happy and relaxing retirement!**

If you would like to add information to our next newsletter, email [mdavis2@kennesaw.edu](mailto:mdavis2@kennesaw.edu) or call Maxayn Davis at 7/499-3646. Also, visit us on the web at [www.kennesaw.edu/learning\\_ctr](http://www.kennesaw.edu/learning_ctr)

*Our resource Center has self paced studies, computers, training videos, and much more! Come enjoy the soft lighting as well as the peace and quiet while you expand your knowledge and skills! Want to take classes but can't manage to find the time to get away from the office? Ask us about the self paced classes available at the Center!*

## Short Training Survey

In order to continue to serve your lifelong learning desires, your input is very important and greatly appreciated. Please take a moment to answer the following questions to assist us in planning for future workshops and training programs.

*Your comments are important in the success of our services. Please return this portion of the newsletter to Linda Lyons at #3301.*

What time frame works best for you to attend training sessions?  
(Select all that apply)

Early morning (9:00 am – 11:00 am) \_\_\_\_\_  
Mid morning (10:00 am – 12:00 Noon) \_\_\_\_\_  
During the lunch hour (12:00 Noon – 2:00 pm) \_\_\_\_\_  
Early afternoon (1:00 pm – 3:00 pm) \_\_\_\_\_  
Late afternoon (2:30 pm – 4:30 pm) \_\_\_\_\_

Which days are better for you to attend a training course at the Center?  
(Select all that apply)

Monday \_\_\_\_\_ Tuesday \_\_\_\_\_ Wednesday \_\_\_\_\_ Thursday \_\_\_\_\_ Friday \_\_\_\_\_

Are you willing to attend classes that may have two or more future sessions scheduled?

YES \_\_\_\_\_ NO \_\_\_\_\_

Sometimes outside facilitators are brought in to conduct specific areas of training. Would you be willing to pay a small fee for materials only, if the course is an area of interest to you?

YES \_\_\_\_\_ NO \_\_\_\_\_

What specific topics you would like to see available on future training schedules?

---

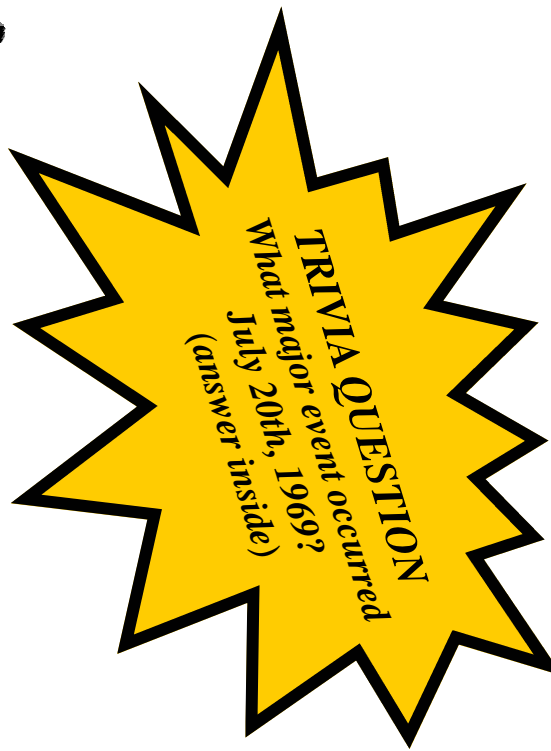
---

---

---

Is your unit in need of customized training? If so, please contact Linda Lyons at 770-423-6528.

*Thank you for your feedback and for supporting our programs.*



Center for University Learning  
1000 Chastain Road  
MB # 3301  
Kennesaw, GA 30144



Kennesaw State University

Center for University Learning

For Faculty & Staff

Newsletter

Volume 1, Issue 2  
June 2005

## Staff Council introduces Scholarship Program to KSU!

### Staff Council Scholarship Guidelines:

#### **Who is eligible?**

Any staff member who is a benefited full time employee, worked for KSU at least one year, completed one semester of classes, has a 2.5 cumulative GPA, and has a goal to complete a degree/certificate.

#### **What school can they attend?**

Any university within the University System of Georgia or an accredited technical school.

#### **How much is the scholarship?**

The amount is \$500 used for textbooks and supplies related to class (i.e. calculator, etc) at the KSU Bookstore.

#### **How will the staff member be selected?**

Candidates must write a one page letter of interest explaining how they plan to use this scholarship to advance their educational and professional goals. A Selection Committee will decide who will receive the scholarship.

The Staff Council at Kennesaw State University serves as the representative body for all staff employees at the University. One of the governance and standing committees at Kennesaw State, Staff Council supports and facilitates the mission of the university by: Acting as a collective voice for presenting the concerns and needs of the KSU staff to the university administrators; striving to improve staff's working environment by contributing to ethical principles, diversity, unity, and strength of the entire KSU community; promoting an atmosphere where KSU staff can be positive ambassadors of the University, in the greater Atlanta community area and beyond.

Staff Council meetings are held every 3rd Tuesday of the month in Burruss Building 137 and are open to anyone. Any staff member interested in attending or becoming involved in the many projects and activities sponsored by the Council is invited to contact Staff Council Chair, Angie Nunz ([anunz@kennesaw.edu](mailto:anunz@kennesaw.edu) or x6743), or any Staff Council Representative for more information.

**For more details regarding the Scholarship Program and/or other Staff Council activities, visit their web page at: [www.kennesaw.edu/staff/](http://www.kennesaw.edu/staff/)**