

4 TYPES OF LEARNING ANALYTICS

1 Student Engagement Data

- Number of clicks on course materials
- Number of students accessing supplementary resources
- Frequency of student log ins to the course in D2L

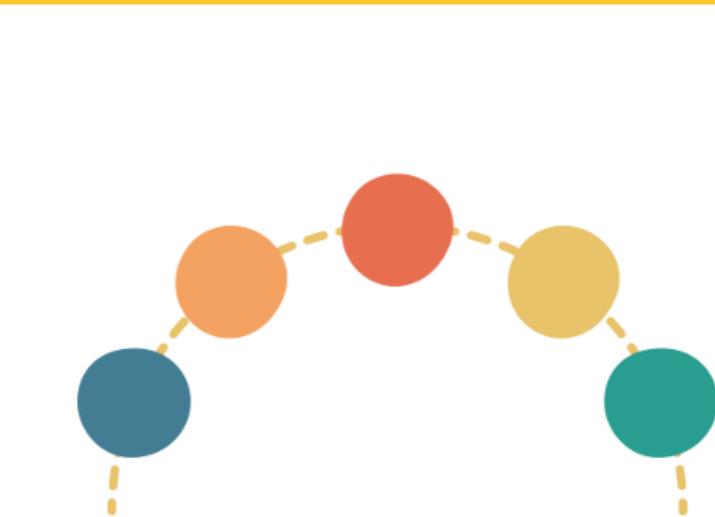


2 Assessment Data

- Grade distribution for summative assessments
- Rubric scores from performance-based assessments
- Formative assessment results (e.g. quizzes & polls)

3 Learner Progress Data

- Pre and post assessments
- Performance throughout the semester
- Assessment data that reflects knowledge, skills and abilities



4 Feedback & Interaction Data

- Peer-to-peer interactions
- Instructor feedback on student work
- End of semester comments and questions from students

Learning Analytics Means...

- Evaluating course performance and making adjustments as needed
- Using data to inform instruction
- Incorporating student feedback in future semesters

