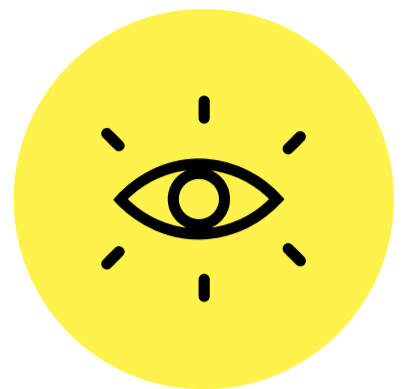


# Simple Syllabus at KSU

## What is Simple Syllabus?

It is a centralized, template-driven platform that enables instructors to quickly personalize and publish interactive class syllabi - directly within D2L.



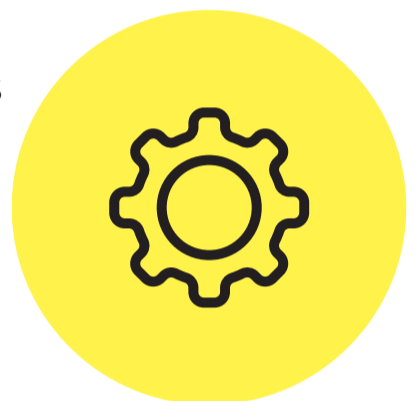
## Why use Simple Syllabus?

The Board of Regents has required institutions to provide students with clear access to course content, requirements, and evaluation methods.



## Features of Simple Syllabus

- Customizable Pre-made Templates
- Located on the D2L Navbar
- Centralized searchable Repository
- Control privacy settings

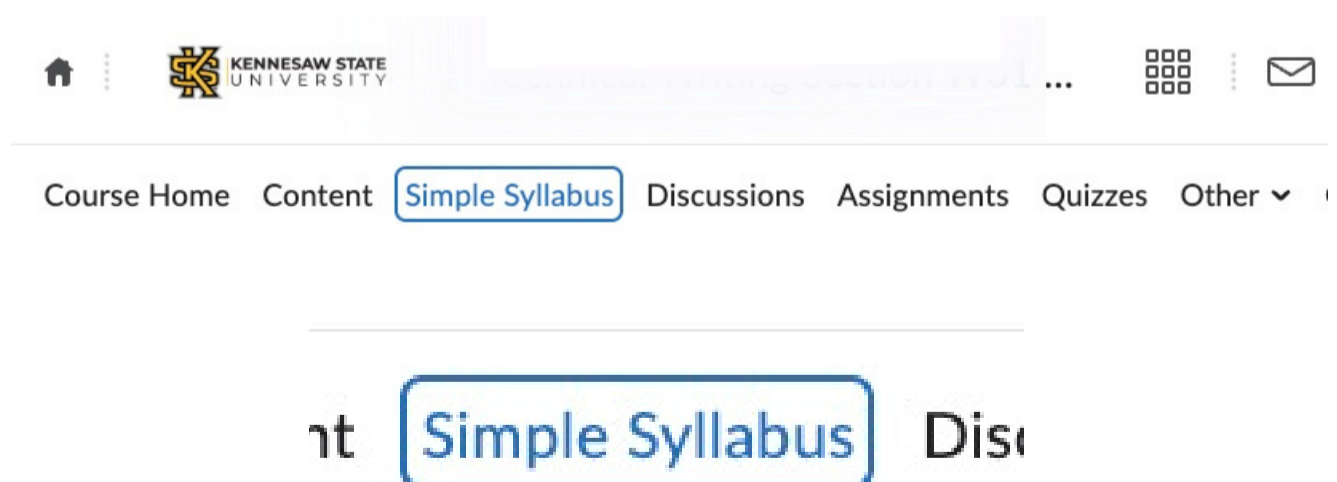


## Faculty Benefits of Simple Syllabus

- Pre-populated College & Institutional Policies
- Improved Communication
- Increased Transparency
- Supports Student Success
- Quick course setup between semesters
- Access to the public syllabus library



## D2L Link for Simple Syllabus



## Want to learn more?

Request a [consultation](#) with a DLI Instructional Designer.