

## **Kennesaw State University** **Fall 2025 | Audition Placement Repertoire - TRUMPET**

**Note:** in professional settings, it is a *minimum expectation* that musicians:

- Translate and understand any foreign terms present in their music
- Prepare and thoroughly practice any unfamiliar transpositions
- Locate and listen to multiple reference recordings, representing a wide variety of styles, tempos, and artistic interpretations; these should be referenced daily, not just once

Therefore, we expect you to do appropriate research and preparation. Faculty reserve the right to stop any audition we feel is not sufficiently prepared. Please take this first impression seriously and prepare accordingly!

Any questions regarding selected excerpts should be sent to Dr. Wadsack. Auditionees should perform excerpts as directed, and as marked on the parts with brackets. Please use the parts provided to avoid confusion between various editions or misunderstandings about requested excerpts.

### **Excerpts (to be selected from the following):**

**All Applicants** must prepare the following excerpts:

**Arban**, *Characteristic Study No. 2* (recapitulation only)

**Rimsky-Korsakov**, *Procession of the Nobles* (mm. 6 to Rehearsal 2)  
arranged for the Goldman Band by Erik Leidzen

**Snedecor**, *Low Études for Trumpet*, No. 4 (mm. 1 to 9 only)

**Additionally**, applicants who wish to be considered for placement in Wind Ensemble (top band) and/or Symphony Orchestra must prepare the following excerpts in addition to those listed above. It is recommended that orchestral excerpts are performed on C trumpet:

**Copland**, Opening to *Fanfare for the Common Man* (mm. 6 to 21)

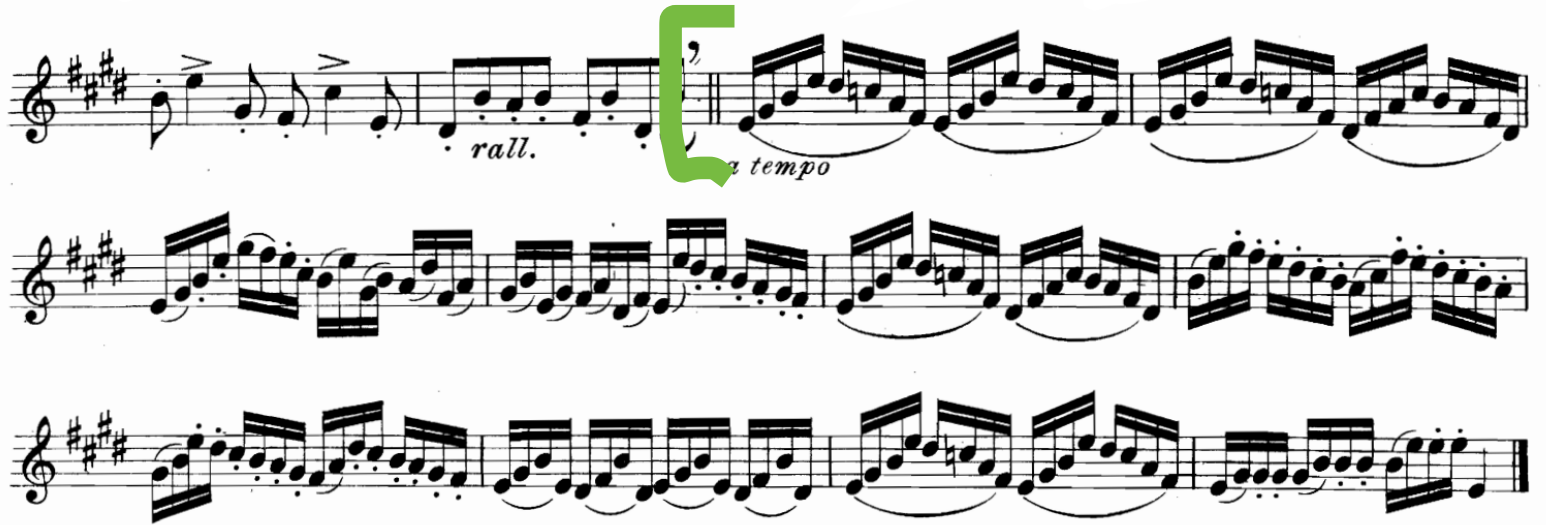
**Hindemith**, Opening to Mvt. II from *Symphony in B-flat* (mm. 1 to 26)

**Sibelius**, *Symphony No. 2*, Mvt. IV: Rehearsal 'Q' to mm. 341

Note: *Trumpet part is in F*



**Arban**, Characteristic Study No. 2 (recapitulation)



**Rimsky-Korsakov**, Procession of the Nobles (mm. 6 to Rehearsal 2)

Excerpt No. 1

Allegro moderato e maestoso (♩ = 112)

*ff*

①

*sempre stacc.*

*ff*

②

6

**Snedecor**, Low Études for Trumpet, No. 4 (mm. 1 to 9)

**Andante - quasi rubato**



**Additional Excerpts** (for those wishing to be considered for placement in the Wind Ensemble and/or Symphony Orchestra):

**Copland**, Opening to Fanfare for the Common Man (mm. 6 to 21)





Hindemith, Opening to Mvt. II from Symphony in B-flat (mm. 1 to 26)

Andantino grazioso (♩ 56)

mf p mf

5 mf

9 mf A

12 p mf p

16 p espr. B mp espr.

20 p mf

25 p



Sibelius, Mvt. IV from Symphony No. 2: Rehearsal 'Q' to mm. 341

Q Solo



317



323



329 R



335



341

