




KENNESAW STATE  
UNIVERSITY  
COLLEGE OF THE ARTS

SCHOOL of  
ART and DESIGN

*create*

**your  
WORLD  
HERE**



# WHY CHOOSE KENNESAW STATE UNIVERSITY?

---

**Y**ou are invited to create your world here. With our nationally recognized faculty of artists, designers, art educators and scholars, we are committed to exploring the convergence of art, design, and creative inquiry. The Kennesaw State University School of Art and Design provides a rigorous education, no matter which degree you choose. We offer a BFA degree in Art with concentrations in Art Education, Art History, Ceramics, Graphic Communications, Illustration, Painting and Drawing, Photography, Printmaking, Sequential Art, Sculpture, and Textile & Surface Design. Or, choose a BFA in Digital Animation, or get your MA in Art and Design with concentrations in Art Education, Digital Animation, and Museum Studies.

Our facilities provide students with state-of-the-art resources. The Chastain Pointe facility houses four large drawing and painting studios and an expansive printmaking area. Two new computer studios in the Visual Arts Building provide industry standard technology for our applied arts disciplines of Graphic Communications, Digital Animation, Illustration and Sequential Art. Two new studio spaces and our recently completed computer labs on the Marietta campus support our Textiles concentration.



Professor Joseph Karg  
assists a student.

# BACHELOR<sup>of</sup> **FINE** *arts* in **ART**

## CONCENTRATIONS

Art Education

Art History

Ceramics

Comics & Sequential Art

Graphic Communications

Illustration

Painting and Drawing

Photography and Video

Printmaking

Sculpture

Textile and Surface Design

# BACHELOR<sup>of</sup> **FINE** *arts* in **DIGITAL ANIMATION**

## ART HISTORY MINOR

## CLASSICAL STUDIES MINOR





Apply Now!





# ART EDUCATION

concentration

**T**he Bachelor of Fine Arts with a concentration in Art Education (BFA in Art, Art Education) leads to provisional teacher certification in grades pre-kindergarten through 12 (P-12).

The concentration provides students with a broad foundation in general education, extensive study in art, professional education, and field experiences. All pre-service art education students take studio art courses, art history, and art criticism while taking upper-division art education courses.

Accredited by the National Association of Schools of Art and Design (NASAD), the concentration prepares pre-service students to continue into graduate studies in the KSU MA in Art and Design, Art Education concentration.

Demand is high for art education teachers. Some of our best students are offered positions before graduation and some BFA in Art students are returning to KSU for teacher certification. Starting salary for art teachers in Georgia is approximately \$42,000 to \$49,000, depending upon the district.





# CAMILA PEÑA

*art education*



"My favorite thing about the School of Art and Design in the sense of community I have found within it. In pretty much every class I have taken, my peers and professors have always been incredibly supportive and I have made many good friends too."



Camila Peña  
*An Accident, An Error,  
and A Mistake, 2022*  
ceramic





# ART HISTORY

concentration



**S**tudents at Kennesaw State University may choose to concentrate in Art History within the BFA in Art, or to complete a minor in Art History. The Art History concentration will introduce you to visual culture from a broad range of historical periods, regions, and contexts: from the ancient world to contemporary art; and from Africa to Asia.

You'll learn how to analyze both objects and texts as historical evidence and examine all aspects of art and the art world, including techniques, makers, patrons, viewers, and collectors. Art History students are encouraged to study at least one ancient or modern language associated with your main area of interest.

Our Art History concentration provides marketable skills in critical thinking, in-depth research, and oral and written communication. Kennesaw State University alumni have continued their studies in graduate school, or gone on to careers in museums, galleries, and teaching. A concentration or minor in art history is also useful for students who plan to enter careers such as business, law, non-profit organizations, professional writing, or publishing.



# MCKENZIE BRICK

*art history*



"I am a recently graduated senior working at the Booth Western Art Museum as an educator. My favorite Art History subjects include Latin American art, Native American art, and Contemporary art. My favorite artist (and the artist I wrote about for my Senior Capstone paper) is Tom Kiefer; he inspires me every day. Through photography, he documents the lives of people traveling to North America. His efforts are inspirational and approached with respect and empathy."



Tom Kiefer at work in his studio. Photo by Jim Gillett, United States. [tomkiefer.com](http://tomkiefer.com)



Sudent drawing archeological illustration  
with Roman pottery.





# CERAMICS

*Ceramics*  
concentration

**T**he Ceramics concentration offers students broad training in all processes of ceramic fine art and design/production. These processes include hand-building, wheel-throwing, mold-making, slip-casting, and clay and glaze formulation. Our studio offers all types of firing methods including oxidation, reduction, soda, and raku. We partner with local community studios to offer internships, part-time teaching jobs, and the occasional opportunity to wood fire.

The Mudslingers, a student organization, gives ceramics students the opportunity to sell their work on- and off-campus, and to plan and lead masterclasses in the ceramics studio for other students. Lower and intermediate classes in the concentration focus on techniques, while advanced classes focus on content, surface, and professional development in the student's chosen path within ceramics.

Each student may tailor their education in the upper levels to suit their own unique goals and aspirations, so that we may best prepare them for the specific career of their choice within the broader field of ceramics. The faculty are nationally renowned artists with backgrounds in figure sculpting, wheelthrowing, digital design for ceramic production, and slipcasting.

Alumni are highly successful international fine artists and designers, local business owners, teachers in both public and private schools, art professors, and owners or managers of community studios in the region.



# BAILEY MCINTYRE

---

*ceramics*



"I love the ceramics studio and the community within it. The amount of resources available for skill and knowledge growth in this field is far more than I could have imagined."

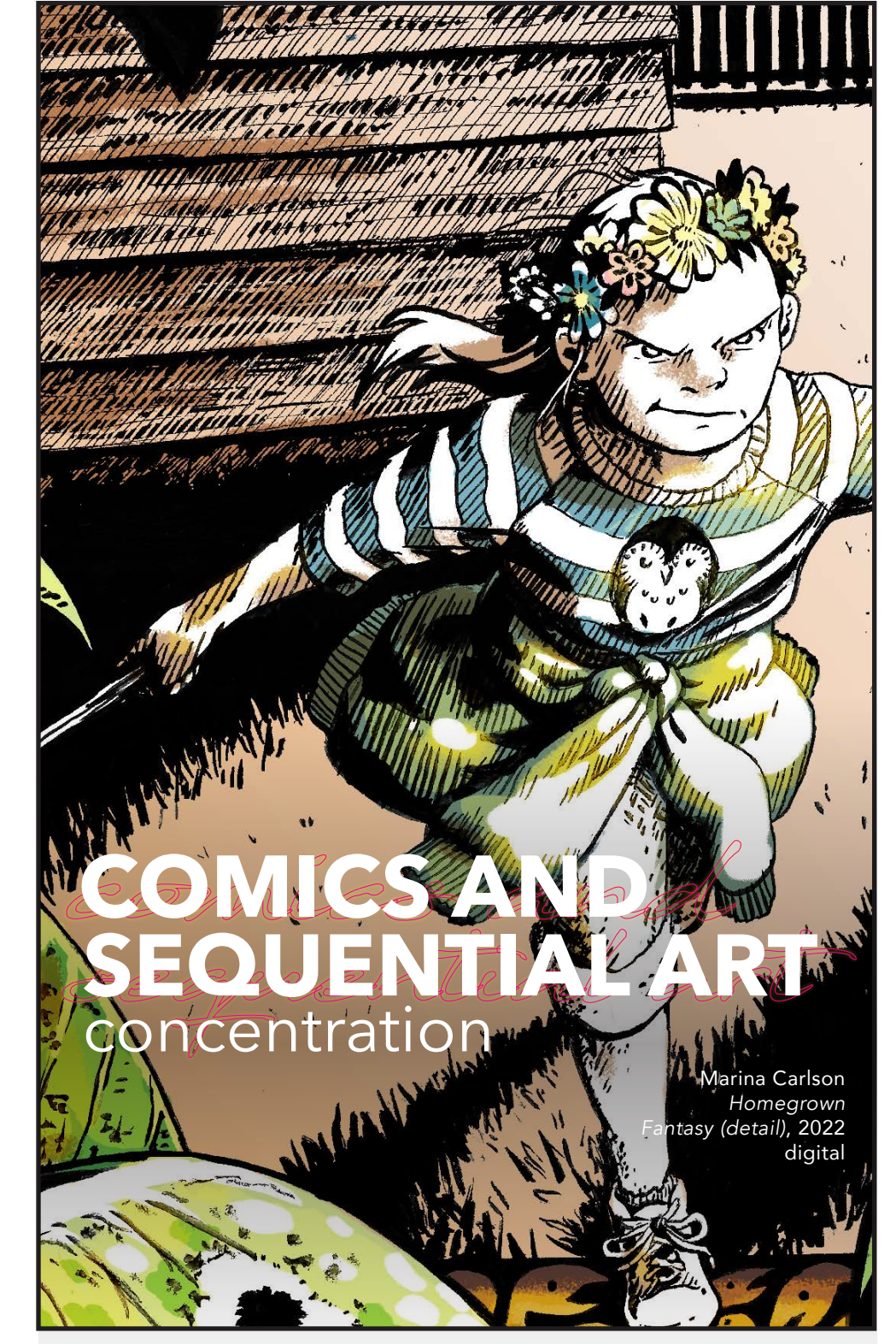
I am currently taking wheelthrowing and I love this class. I am especially excited for taking Ceramic Tech next semester and learning how to formulate clay and glaze, as well as build and wire kilns."

Bailey McIntyre  
*purple bowl, 2022*  
ceramic









# COMICS AND SEQUENTIAL ART

concentration

Marina Carlson  
Homegrown  
Fantasy (detail), 2022  
digital



Students in the Comics and Sequential Art concentration acquire the skills to be dynamic visual storytellers. Students explore traditional comic art as well as storyboarding, children's books, self-publishing with zines and many other forms of visual narrative design and development.

Students in this concentration learn traditional studio art disciplines along with ample studio time to study sequential media and create their own work. The goal is for students to finish their degree with a strong, practiced style of visual storytelling and a body of work to use towards their portfolio and careers.

The Comics and Sequential Art concentration for the Art, B.F.A. degree began in 2017. It was founded as part of an articulation agreement with ESA Saint-Luc in Brussels, Belgium. The innovative pedagogy of ESA Saint-Luc influenced the foundation of the concentration in the School of Art and Design.



Marina Carlson  
*Homegrown  
Fantasy (detail)*, 2022  
digital

# TRINITY BYRD

*sequential art and comics*



"My favorite thing about KSU's School of Art and Design is that there are so many different classes and concentrations available to students. I could be focusing on my sequential art major while also taking ceramics and printmaking. It is really a wonderful thing."



Trinity Byrd  
The Parasight Run!, 2022  
digital

Right: Charlie Goodwin, Film Bro Moment Page 1, 2022, digital

VRRM...

VRRRRM...

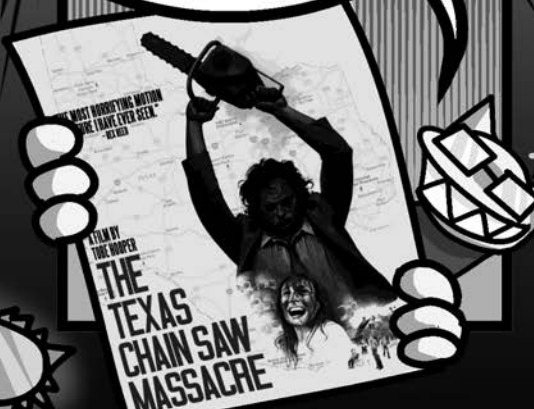
VRRRRRRMMMMM

VRRRRRRMMMMM

HI. CAN I  
TELL YOU  
ABOUT

1974 HIT  
MOVIE,  
"THE TEXAS  
CHAIN SAW\*  
MASSACRE"?

\*YES. IT'S  
SPELLED  
LIKE THAT





# GRAPHIC COMMUNICATIONS

concentration



Shannon Gaskin  
Bee Well Soaps, 2022





**O**ur Graphic Communications concentration prepares you for a creative career in the advancement of print and digital media. You will gain solid training in the foundations of visual communication.

You'll study the basics of typography and composition with type, images, colors, and graphics. You'll immerse yourself with a hands-on experience in publication design, advertising and packaging through research and design thinking. You'll explore interactive media design, UX/UI design, and motion graphics.

Our advanced courses feature small class sizes, allowing for thorough study of new graphic technologies with close faculty supervision. We offer the opportunity to exhibit your work both on- and off-campus. Numerous internship opportunities are available.



Nick Collins  
*Reformation Label  
Design Internship, 2022*

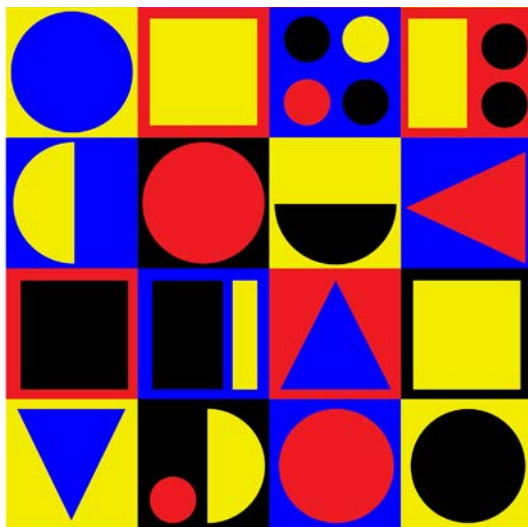
# TONY RAMIREZ TELLEZ

*graphic communications*



"Kennesaw State University will help me become a Product Designer/UX Designer or enter the field of Industrial Design."

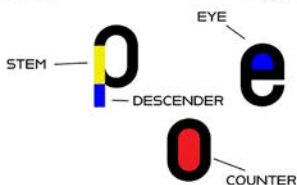
Tony Ramirez Tellez  
*Reross Type Layout, 2022*



## Reross

Elia Preuss  
2019

Created by Elia Preuss, this font was inspired by Reinhold Rossig's alphabet designs, who was a student to Joost Schmidt. His alphabet was monolinear, with geometric lettering and constructed on grids using a compass and ruler. This true Bauhaus-influenced font is very geometrical, and contains many contemporary features.





## Problems

Volkswagen's crop of new models was far less successful than the original. As variations of the Beetle, they were rooted in a design that dated to the 1950s. It was an inhumane, inflexible, and more space-rivaled than most. Northeimer, perfect of it, producing cars such as the 1970's Passat, the sportiest exploration of the Beetle theme.

Although its growing legion of buyers loved the Beetle precisely because it was a model of design stability, there was pressure to make sweeping changes in VW's product line. Traditional fresh features, VW might grudgingly alter a badge, modify a seat style, or maybe enlarge a rear window, swayed by an ingenious advertising campaign that portrayed this inertia as a virtue. Americans considered it part of the cute little Bug's charm. But in Germany, influential observers of the industry openly questioned Volkswagen's commitment to future products. Dire predictions of the company's demise were published. Heinz Nordhoff, the company's founder, warned the press that the Beetle was an archaic design. Heinz Nordhoff, the company's founder, warned the press that the Beetle was an archaic design. Heinz Nordhoff, the company's founder, warned the press that the Beetle was an archaic design.

man federal government and the State of Lower Saxony had argued for years over VW's destiny. In the early 1950s, they would have been content to practically give the business to another car maker. But by the end of the decade, there was no way this would have been acceptable. Finally in June 1960, the German federal Parliament privatized the company. Volkswagenwerk GmbH was created as a joint stock corporation and 3.6 million shares were issued on January 1, 1961. Sixty percent of the stock was sold to private shareholders, 20 percent was retained by the State of Lower Saxony, and 20 percent was held by the federal government and its agencies. The private shares were snapped up and the stock quickly began a steep climb in value. On January 7, 1961, 7,000 stockholders jammed Wolfsburg for the first annual meeting of Volkswagenwerk AG. But the faultfinding continued, both in the press and in Nordhoff's face at company meetings. The VW chief would smile patiently point out the company's financial performance, and remind all of its ever-escalating production. What was wrong, he challenged, with a company that could do this?





# ILLUSTRATION

concentration

Graham Troung  
Descendancy, 2022  
digital painting

**T**he Illustration concentration represents a confluence of the traditional studio disciplines of painting and drawing with more commercial applications of image design and development.

The applications of studying illustration include preparing for traditional markets like editorial and commercial illustration as well as entertainment media and digital venues.

Students studying Illustration are engaged with visual problem solving and image creation. The goal is to produce a strong portfolio with a distinct personal style and rich visual vocabulary.

The Illustration concentration for the Art, B.F.A. degree began in 2017. It was founded as part of an articulation agreement with ESA Saint-Luc in Brussels, Belgium. The innovative pedagogy of ESA Saint-Luc influenced the foundation of the concentration in the School of Art and Design.



Logan Coleman  
*Untitled (detail)*, 2022  
digital painting

# LOGAN COLEMAN

*illustration*



"I love the amount of creativity I see every day from both my professors and classmates. It inspires me to keep improving."

Logan Coleman  
*Untitled*, 2022  
digital painting







Chantelle Chapman  
*Brave Sir Mouse*, 2022  
Mixed media illustration





# PAINTING & DRAWING

concentration

**T**he Painting and Drawing concentration in the School of Art and Design supports the investigation of diverse approaches, histories, and forms of painting and drawing. Our concentration views art-making as a process of inquiry that is continually sharpened by experience, knowledge, and practice. The diverse faculty brings a broad range of voices to individual study.

Painting & Drawing recognizes and is informed by the deep roots of its history as applied to contemporary methods and concepts and continues to play a significant role in contemporary culture.

Viewed as independent but overlapping disciplines, Painting & Drawing provides a wide range of courses designed for students of all levels, backgrounds, and interests. We have a sustained history and continuing priority of integrating visiting artists, critics, and curators, as well as scholars, into the core of its instruction.

By enabling the development of painting and drawing as a means of individual expression, reflection, and communication, we encourage our students to cultivate their own points of view.





# BIANCA GUERRERO

*drawing & painting*




"My favorite things about the KSU School of Art and Design would have to be the dedicated professors and the hard working art students. The two allow me to feel full-filled as an artist. In fact, my best friends are classmates I met in my studio courses. The bonds created have been unmatched to those I have made in the past. As for my professors, their commitment to my growth has nurtured my passion for creating art. I look up to their accomplishments and want [the same] for myself."



Bianca Guerrero  
*untitled*, 2023  
oil on canvas



A low-angle, upward-looking photograph of a city street. Two tall, modern skyscrapers with glass facades frame the central sky. On the left, a large, dark, curved architectural element, possibly a bridge or overpass, dominates the foreground. The sky is a clear, pale blue. The overall composition creates a sense of height and urban density.

# PHOTOGRAPHY *photography* AND VIDEO *and video* concentration

Bailey Kijek  
Public Space 1, 2022



**T**he Photography and Video concentration develops skillsets in the following photographic disciplines: fine art, editorial, commercial, and videography.

Students work with everything from traditional films and papers to state-of-the-art digital cameras, lighting equipment, large format printers, and the extensive software of Adobe Creative Suite. Our new facility has a dedicated shooting studio with cyclorama wall, green screen, background papers, and both continuous and strobe lights for a variety of applications.

We work with several galleries, studios, arts centers, professional photographers, and videographers for student internship possibilities. These give students the opportunity for real world job experience and to be able to see the tools and techniques used by leaders in the field.

We also work with the Georgia Film Academy to allow students the opportunity to learn skills directly related to the growing film industry in Atlanta. Our concentration gives students the technical and conceptual skills to be strong competitors in the dynamic industry of Photography and Video Production.

Dominic Reilly  
*Public Space 1(detail), 2022*



# DANA WEISS

*photography and video*



"I never expected to be an art major and was originally focused on the sciences, but I'm glad I took the plunge. I transferred to KSU in my sophomore year and have enjoyed KSU since. I like the atmosphere; it feels like a small school, despite being one of the largest in Georgia. I've enjoyed talking with the teachers and making connections while navigating the art world."



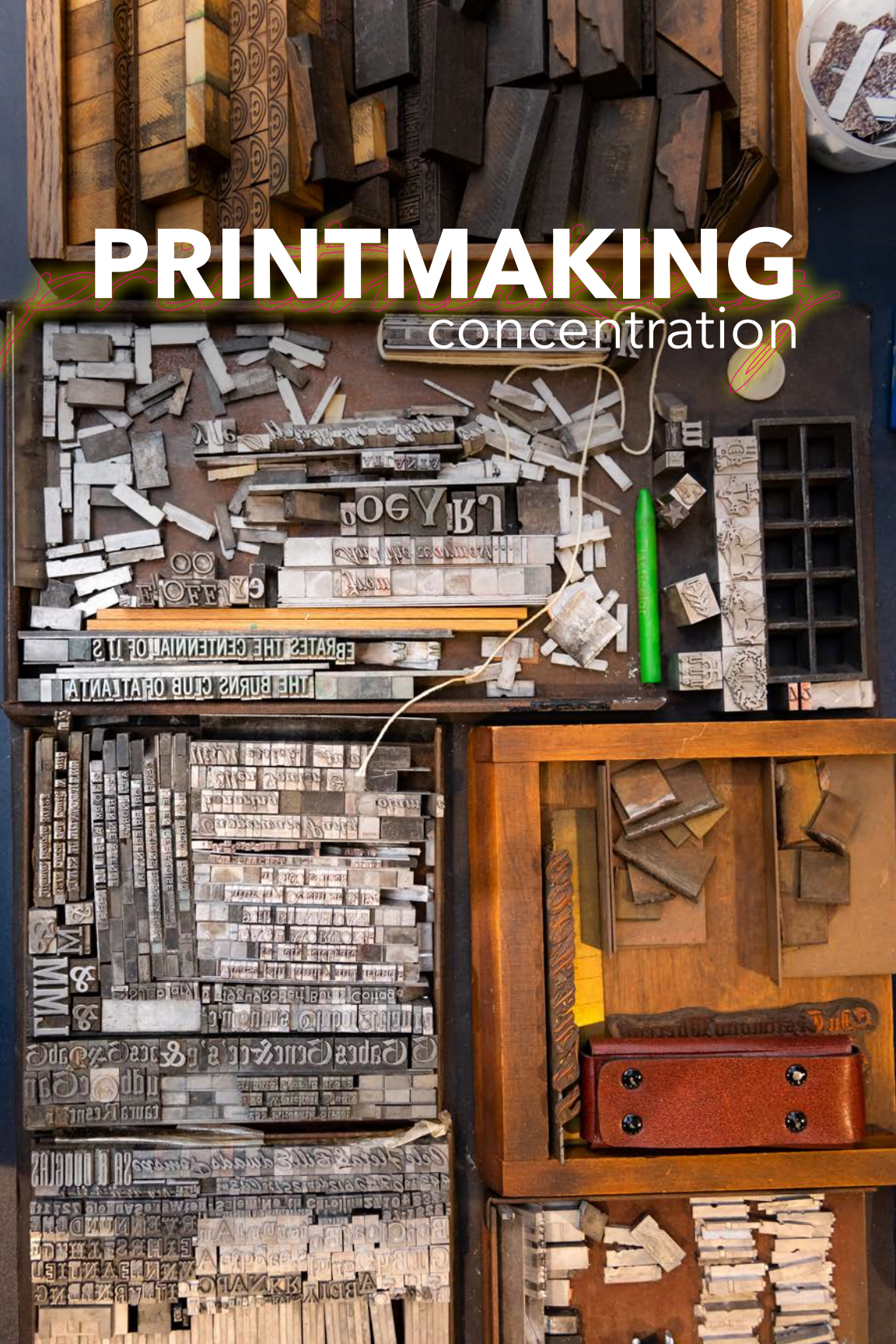


Nikki Raitz  
*Portals*, 2022  
Photograph



# PRINTMAKING

concentration



**T**he Printmaking concentration offers professional courses to help meet the demands of today's marketplace. Students receive solid training in the foundations of art and opportunities to explore diverse kinds of media within the printmaking concentration. Students will take advanced courses in Printmaking that include all contemporary medium as well as traditional processes.

Within the Printmaking curriculum, we offer Book Arts/Papermaking and Letterpress from the basics through advanced techniques. Our small class sizes allow for intense courses offerings with close faculty interaction.

Students have the opportunity to exhibit their work both on- and off campus and build a valid resume for their career. Numerous internships and scholarships are available.





# EVAN CARRITHERS

*printmaking*



"I am an artist who specializes in painting, drawing, and printmaking. Growing up in Athens, Georgia, I moved to metro Atlanta for school, specifically for Kennesaw State. I started as a programmer studying game design and development at Kennesaw State. Within my first year, I realized I was not a programmer. I started taking my art more seriously and made the switch into the School of Art and Design."

Evan Carrithers  
*Koji*, 2022  
print









# SCULPTURE

concentration

Hannah Bumgarner  
*chess set, 2022*  
Wood



**O**ur Sculpture concentration provides a practical education in three-dimensional design and conceptualization, hands-on contemporary and traditional tool use, fabrication, and professional practices.

Students work with a broad array of materials, from wood and metal to silicone resins and plastics, and learn how to safely use handsaws and chisels, table saws, bandsaws, welders, laser cutters, 3D printers and CNC routers.

Students may also learn methods of metal fabrication including plasma cutting, welding, mold making and metal casting, or even design and fabricate permanent public works, such as those located in the City of Kennesaw.

This concentration offers small class sizes where students work closely with their professors. Students may go on field trips to material suppliers, fabrication companies, and the studios of professional sculptors.

Students may join the Sculpture Club, which affords them the time and space to make and sell work, and attend conferences and workshops.

Internships with fabrication companies such as ID3 Group and AFX Studios are available for upper-level students, which may lead to employment or to companies that need employees with a similar skill set. Students may work as studio assistants to nationally recognized sculptors, work in the burgeoning film industry, or become wood workers, professional welders or sculptors that create and sell public works.



# MARY BECK PINKSTON

*sculpture*



"I chose KSU for the environment and sense of community that it brings. It really is the perfect location for budding artists, being so close to the city and a short drive to the mountains. [It is the] best of both worlds."



Mary Beck Pinkston  
*Citrus coaster*, 2022  
Bronze



Iron pour collaboration by professors and students.

*SGCI Award. 2017.*

Stainless steel, brass, walnut.  
Designed by Thomas Daniel.

Built for the closing ceremonies  
of the 2017 SCGI Conference.



# MASTER CRAFTSMAN

Program



**T**he Master Craftsman Program at Kennesaw State University is a student-driven program that focuses on providing the community with high-quality artwork, while at the same time providing students with a high-impact learning environment.

Students work with clients to design and build artwork that meets the specific needs of the client while gaining invaluable real-world experience.

We seek to help shape the community through creative placemaking by engaging with our partners through public art projects and community engagement events.

*Gateway Park Shade Structure. 2019.*  
Stainless steel. Designed  
by Jonathan Copeland.

Installed in Gateway Park  
in downtown Kennesaw, Georgia.



# concentration

# AT THE



**T**extiles & Surface Design is focused on preparing students to work in the regional flooring and surface design industries, while also cultivating students' creativity and skills to serve fashion design.

Students are led through a curriculum that blends both conceptual art practices and technical digital skills. Gaining confidence through creative development, fabric construction, and industry standards, students will graduate prepared to enter the multifaceted, exciting field of textiles.

Right: Student Carli Webb paper weaving in Textile Foundations.





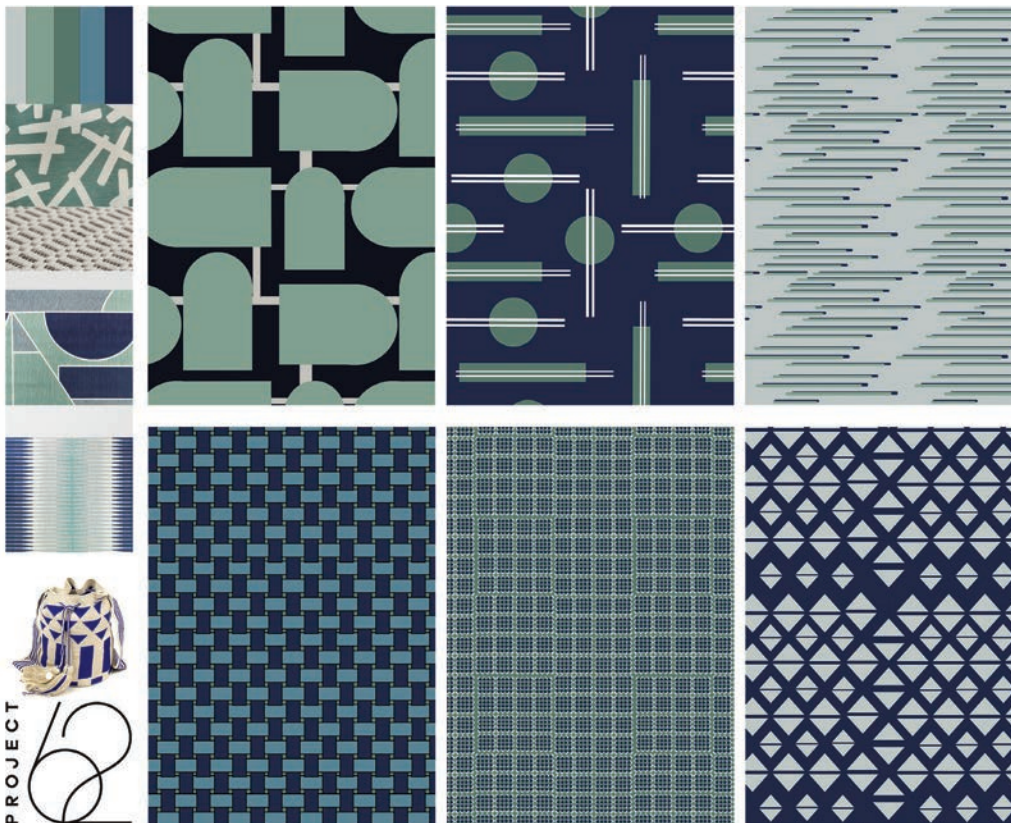
# NICOLE BUSTOS MAZENETT

*textiles and surface design*



"KSU offered me the best opportunities as an international student for my career plus the major that I wanted was offered here. As soon as I made a tour on campus, I knew this was the school that I wanted to graduate from. KSU has so much passion, creativity and the people that I have met there have helped me so much throughout my career."

Nicole Bustos Mazenett  
Project 62, 2022







Abby Eversold  
quilted pillow, 2022





# Bachelor of Fine Arts in **DIGITAL ANIMATION**

Photo: KSU Students work on character animation.



**T**he Bachelor of Fine Arts (BFA) with a major in Digital Animation prepares you for various animation and animation-related careers or graduate school by providing a thorough grounding in fundamental principles and techniques. This degree focuses on intensive work in digital animation supported by a program of general studies.

Digital animation includes all animation techniques that are designed exclusively with the use of computers. With digital animation, you can create both 2D (two-dimensional) and 3D (three-dimensional) animation.

The five forms of animation are:

- Traditional Animation
- 2D Animation
- 3D Animation
- Motion Graphics
- Stop Motion

Digital Animation foundational coursework includes the basics of two and three-dimensional design, color theory, computer applications in art, and concept, creativity, and studio practice.

Upper-level coursework includes electronic illustration, foundation animation, character development as well as other digital animation courses.



# CAITLYN DAVID

*animation*



"My favorite things about KSU's School of Art and Design so far have been the people and opportunities at every corner. Many professors, peers, and clubs have made my experience so unique. I am challenged to improve and constantly have lots of resources to do so."



Caitlyn David  
Diluc, 2022  
digital painting



Shery Purani  
Sword, 2022  
3D Model



Kennesaw State University  
COLLEGE of the

*arts*



**78%**

*of students are  
employed within six  
months of graduation*

**100+**

*exhibitions, concerts,  
productions, and performances  
on campus per season*



**Award-  
Winning**

*faculty, artists in residence,  
and guest scholars*



**KENNESAW STATE  
UNIVERSITY**  
COLLEGE OF THE ARTS





# BE *transformed*

**2000+**  
SCHOLAR ARTISTS

**30+**  
PROGRAM  
CONCENTRATIONS

**Nationally  
Accredited**  
ARTS DEGREE PROGRAMS



For more information:



**ArtsKSU.com**



470-578-6650 • [arts.kennesaw.edu](http://arts.kennesaw.edu)

### **College of the Arts**

Dr. Harrison Long, Interim Dean

Dr. Peter Fielding, Associate Dean

Dr. Leslie J. Blackwell, Interim Associate Dean

Prof. Geo Sipp, Director, School of Art & Design

Prof. Marsha Barsky, Chair, Department of Dance

Dr. Julia Bullard, Interim Director, Bailey School of Music

Prof. Chuck Meacham, Chair, Department of Theatre & Performance Studies



**KENNESAW STATE**  
UNIVERSITY  
COLLEGE OF THE ARTS