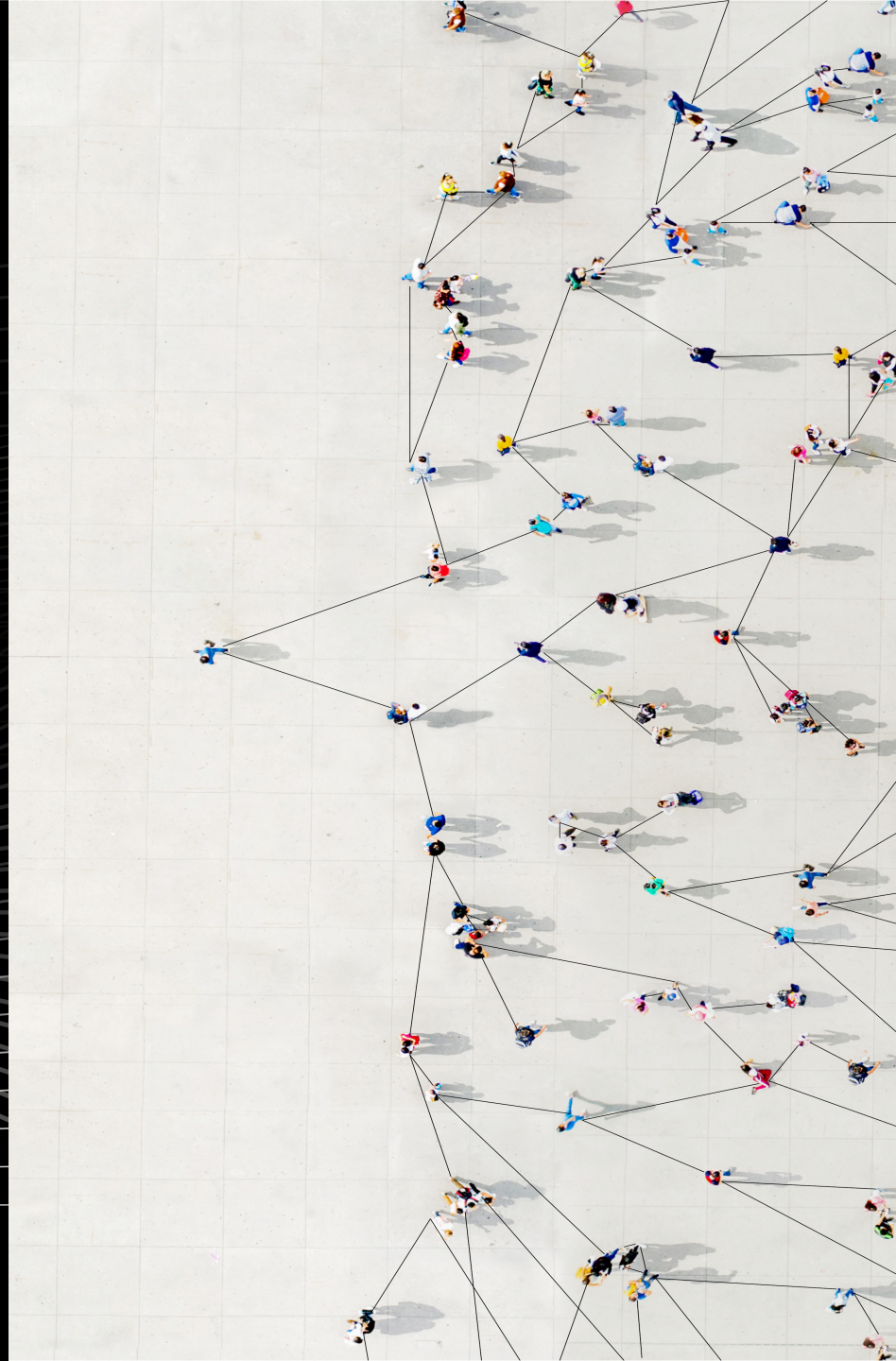


INSTRUCTIONAL DESIGNERS' TOPICS

NOV 30, 2022



DIGITAL LEARNING INNOVATIONS, KENNESAW STATE UNIVERSITY



Service & Support



1

Accessibility

2

Assessment &
Plagiarism Prevention

3

D2L Tools & Instructional
Technologies

4

Engagement &
Instructor Presence

5

Online Pedagogy

6

Other Challenges

Accessibility



1

Accessible documents: WordDocs, PPT, PDF, Webpage.

2

Ally

3

Video captions

4

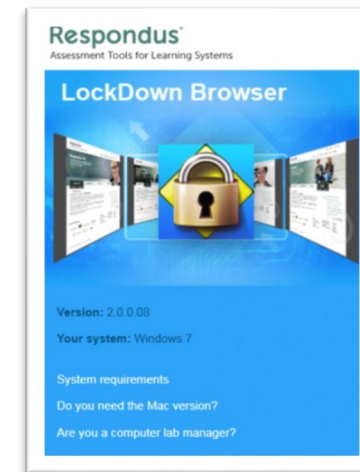
Academic Web Accessibility

Assessments & Plagiarism Prevention



1

Respondus Lockdown browser



2

Turnitin



D2L Tools & Instructional Technologies

1

DLI Tools

2

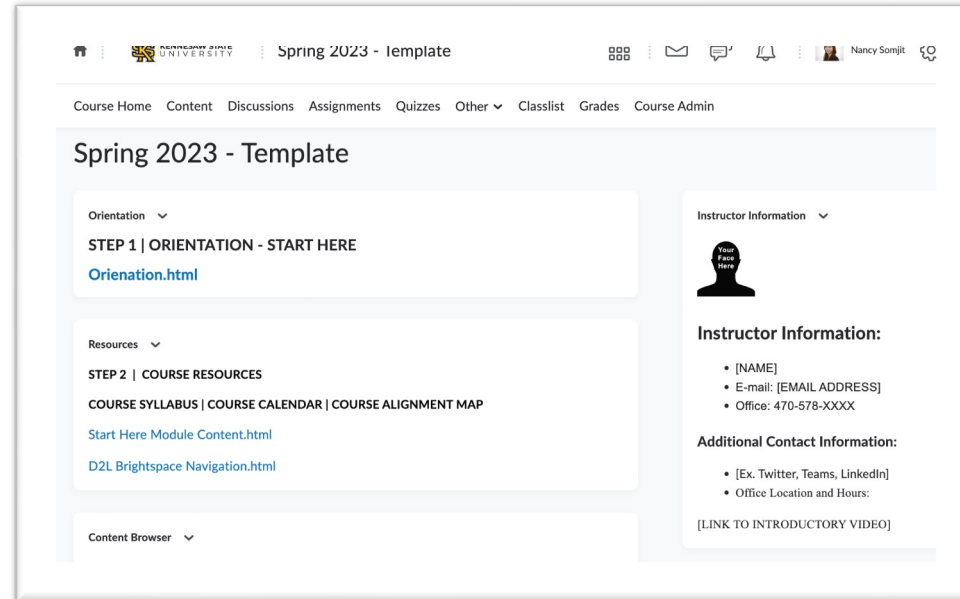
Course Template

3

Shared Courses

4

Instructional Tech: Softchalk, Kaltura, VoiceThread, etc.



Engagement & Instructor Presence



1

Synchronous component

2

Intelligent Agent

3

Embed quiz in the Kaltura video

Online Pedagogy

**Active Learning
Techniques**

Constructivism

**Universal Design for
Learning (UDL)**

**Transparency in
Learning and Teaching
(TILT)**

7 Teaching Principles

Online Accessibility

Engagement

Communication

Flipped Learning

**Instructional
Scaffolding**

Prior Knowledge

Gamification

Bloom's Taxonomy

Assessment Strategies

**Open Educational
Resources (OER)**

**Sustainable Course
Design**

Visit: <https://dli.kennesaw.edu/resources/pedagogyforonlineteaching/index.php>

OTHER CHALLENGES ?

Contact the DLI : dli.Kennesaw.edu



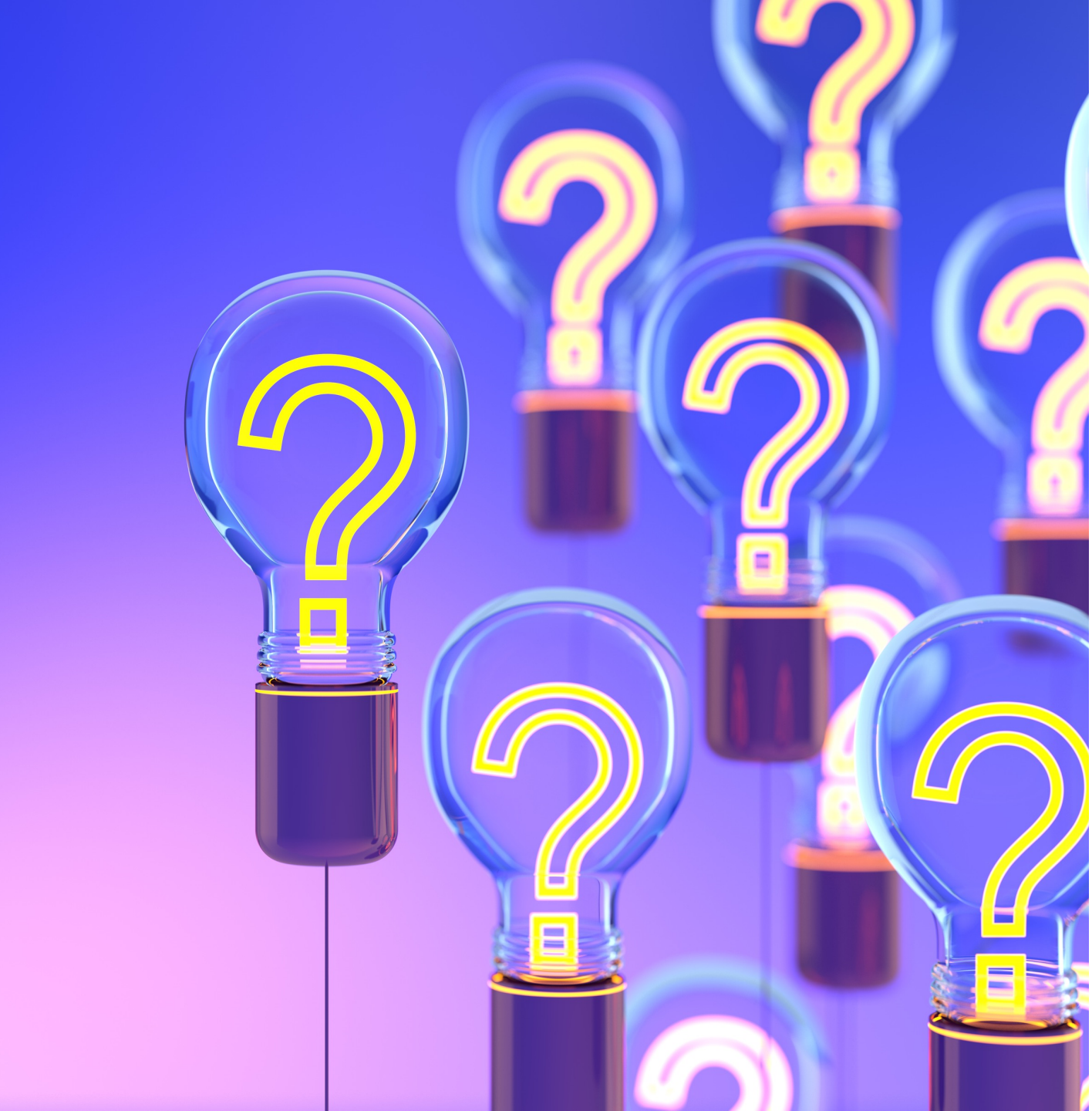
Service Request

Request a course review or assistance from an instructional designer.



DLI Resources

- [Digital Learning Innovations](#)
- [Academic Web Accessibility](#)
- [Creating accessible content](#)
- [Request Professional Video Caption](#)
- [How to Add Closed Captions Automatically to Your Kaltura Video](#)
- [Why and How to Add Small Quiz to Your Video to Keep Student Engagement](#)
- [Online Pedagogy](#)
- [MicroLearning](#)
- [Professional Developments \(Badges\)](#)
- [Instructional Technologies](#)
- [D2L Course Template](#)
- [DLI Online Webinars](#)
- [Contact DLI](#)



QUESTION?





THANK YOU



 bshah4@kennesaw.edu

DLI.KENNESAW.EDU