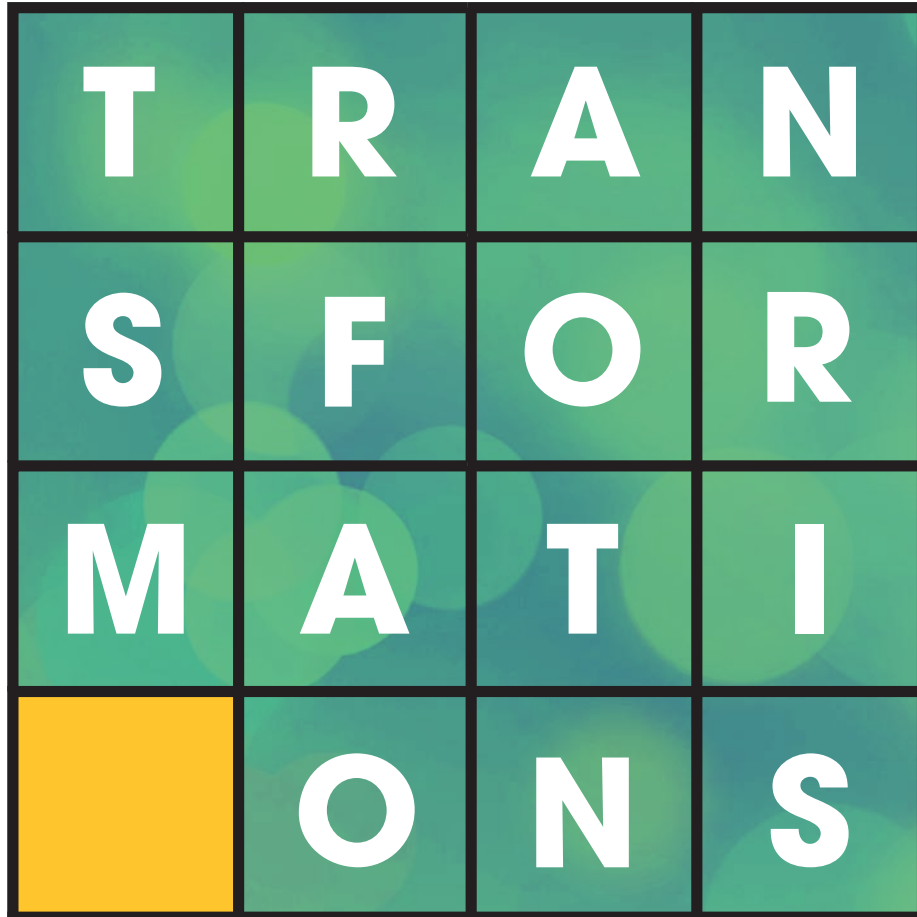


D I G I T A L H E A L T H C A R E



Applied Research and
Industry Collaborations

06
AUG
2024



**KENNESAW STATE
UNIVERSITY**
COLES COLLEGE OF BUSINESS
*Master of Science in Healthcare
Management and Informatics*



CONTENTS

Dean/Director Messages.....	5
8th Annual Awards Recipients.....	6
No One Does it Alone: The Power of Cheerleaders.....	8
Celebrating Cohort 7.....	10
Keynote Speaker: Robert H. Zondag.....	11
Our Story / Our Students.....	12
HMI: Aspire to More.....	14
MSHMI Graduating Class.....	16
Collaborative Partnerships: Academia and Industry Partners Solving Real Digital Health Challenges.....	18
★ The Healing Power of Data: A Novel Data Visualization Solution Which Can Help Improve Patient Quality and Safety Through Data Democratization Diagnose Data, Inc. – Dr. Mickey Bansal	19
★ Unraveling the Influence of Social Detriments of Health Northside Hospital – Melissa Lamb and Elizabeth Cunningham	19
★ Predictive Analysis of Youth Risk Behavior and Suicide Ideation Post-COVID.....	20
Pursuing a Paperless Future in Health Insurance Digital Communication Elevance Health – Vinita Shrivastav, John Zotalis, and Ken Stark	20
Ambient listening AI Application in the Emory Healthcare Network Emory Healthcare – Jason Atkins and Guru Patel	21
Standardized Data: The OMOP Common Data Model Emory Healthcare – Matthew Holland	21
Streamlining Employee Benefits Management with SQL and PowerBI Engagement Health Group – Jackie Warren, MD, RD, LD	22
CareFront Office Solutions: Revolutionizing Healthcare Staffing with Jackson Healthcare LocumTenens.com – Jeannie Sanders	22





CONTENTS

Nurse-to-Patient Ratios and Their Impact on Staffing and Technology in Critical Care Units: An Integrative Review..... 23

Wellstar Discharge Project | **Wellstar Health System – Susan Thurman and LeeAnna Spiva** 23

Data Profile Project | **McKesson – Kimberly Portee, Claudia Arostegui, Tiffany Crawford, Omally Monahan, and Austin Black** 24

Youth Mental Health Crisis: Services and Response..... 25

Streamlining Billing Code Updates in Healthcare: A Project Management Approach | **Elevance Health – Vinita Shrivastav, John Zotalis, and Ken Stark** 25

Enhancing Infection Control in Nursing Homes: A Syndromic Surveillance Dashboard System | **RadarX – Saurabh Shrivastav** 26

DHN and CHIME India Digital Health Trends and Outlook for 2024 | **ScaleHealthTech – Vishnu Saxena** 26

Streamlining Success: Navigating Epic BCA Optimization for Maximum Impact | **The Shepherd Center – Kristin Ndiaye, IS Applications Director, and Atul Kanvinde, CIO** 27

Transforming Healthcare: The Responsible Integration of AI in the Internet of Medical Things | **AMIA Fellowship** 27

Healthcare Analytics for Companies Revenue Outbreak Prediction | **Technology Association of Georgia (TAG)** 28

Unlocking the Potential of Digital Health in Georgia: Insight from TAG Digital Health | **Technology Association of Georgia (TAG Digital Health)** 29

MSHMI Cohorts..... 30

Testimonials..... 34



A MESSAGE FROM THE
EXECUTIVE DIRECTOR



Sweta Sneha

Sweta Sneha, Ph.D.
Founder and Executive Director,
MSHMI

Industry collaboration has been an integral part of the MSHMI program's success from the very beginning. The degree was born from a mandate from the Governor's Office to position Georgia as a leading provider of professionals in the healthcare information technology space. From the very first step, we knew that the only way to provide the workforce that the industry needs is to give the industry a seat at the table.

Since launching in 2016, the MSHMI program has partnered with Metro Atlanta's healthcare and technology innovators to provide students with unprecedented educational and networking opportunities. Among the most powerful of those opportunities are the collaborative research projects our students have worked on as part of their capstone experience. Working alongside industry mentors, students leverage client and patient data to develop solutions to real-world challenges facing healthcare providers and technology firms every day. The work of our students has practical applications that will lead to improved healthcare service delivery and patient outcomes.

Thank you to our industry partners for their valued support of the MSHMI program and its students.

A MESSAGE FROM THE
DEAN OF COLES COLLEGE OF BUSINESS



Robin Cheramie

Robin Cheramie, Ph.D.
Dean, Coles College of Business

The MSHMI program continues to attract top-tier students thanks in no small part to the growing networking of industry partners that have pledged their support to its mission and its goals. In addition to providing a critical advisory role, our partners are directly involved in every aspect of the program. This includes helping develop the curriculum, offering students access to valuable professional development and skill-building opportunities, aiding students in building their industry networks, and, in the case of our collaborative research projects, sharing data and resources with students exploring technology-driven solutions to modern healthcare challenges.

A hallmark of the MSHMI program is that it bridges the gap between multiple healthcare and technology disciplines while also bridging the gap between academic study and real-world application. Working together, our students and our industry partners are making positive changes that will enhance the experience of doctors, patients, and everyone involved in the healthcare delivery process. These partnerships are an essential part of what makes the MSHMI program the only program of its kind in Georgia.

8th Annual Awards

Distinction for Excellence in Leadership and Academia



Dabnei LeBlanc
Oncology Pre-Sales
Software Planner, Varian

Distinction in Professional Achievement and Academic Excellence



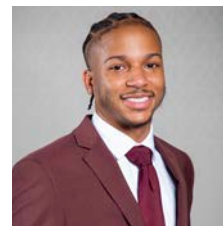
Tonya Condon
Float Nurse,
Wellstar Health System



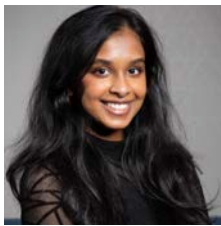
Carter Hughes
Certified Athletic Trainer &
Physician Extender,
Emory Healthcare



Joy Ihedioha
Patient Care Coordinator,
Tend



Kameron Jackson
Licensing Intern



Ann Johnson
MSHMI Graduate



Kay Kellerhouse
Sr. Business Information
Consultant, Elevance Health



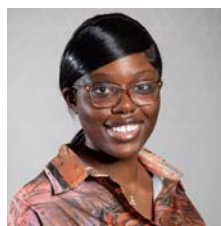
Grete Lawrence
Patient Care Coordinator,
Emory Healthcare



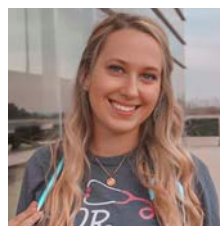
Caroline Lazaro
RN/Electronic Medical Record
Resource Nurse Prec III, Emory
Healthcare



Kalyn Simmons
Sr. Account Manager,
McKesson



Zainab Suara
SCA Repeals Rep,
Elevance Health



Denise Thomas
Sr. System Analyst,
Northside Hospital



Elizabeth Vasquez
Sr. Applications Analyst,
Northside Hospital



Natasha Williams
Microbiologist, CDC

Gala Awards Recipients

Rising Star Academic Excellence



Calise Hammonds
Front Desk Receptionist,
Peachtree Immediate Care



Saiyda Jabeen
Graduate Research
Assistant, HMI



Angelica Lewis
Public Health Educator, GA
Department of Public Health



Colette Obazee
Graduate Research
Assistant, HMI



Deborah Ojumu
Healthcare Administrator,
A&S Healthcare



Dipti Paldhikar
General Dentist,
A Private Clinic, Inc.

Rising Star Professional Excellence



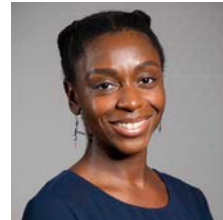
Anita Ajuebor
Quality Improvement Fellow,
Cincinnati Children's



Brennan Couch
Sr. Issue Resolution
Specialist, Locum Tenens



Andre Derilus
Sr. Buyer,
Wellstar Health System



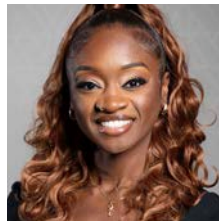
Mariah Hubbard
Sr. Surgical Services Systems
Analyst, Northside Hospital



Nomana Khan
Sr. Director, Maximus
Public Health



Shanil McFarlane-Fuller
Clinical Research Coordinator,
Emory University



Shaniqua McNeil
Infusion Nurse,
Shepherd Center



Khushbuben Patel
Incoming Data Analyst
Intern, Erlanger



NO ONE DOES IT ALONE

The Power of Cheerleaders

Success is something few people achieve on their own. Behind every leader, innovator, or entrepreneur is a team of cheerleaders – advocates, sponsors, mentors, family, friends - who helped them along their journey and inspire them to reach their full potential.

As I ask you to support Kennesaw State's Master of Science in Healthcare Management and Informatics program, what I'm really asking is for you to be that cheerleader for the students. Your help provides advocacy, mentorship, and closes the financial gap for our students. More importantly, it creates a circle of gratitude where graduates give back by becoming mentors for the next generation, lifting them along the way.

Look no further than my own story to understand how the right mentor can set someone on the path to success. When I moved to the United States from India in 1996 to study

computer science at the University of Maryland, there were only handful of women in my class. That number shrank into the single digits by the time I graduated. When I began working as a technology and management consultant with PricewaterhouseCoopers, I saw the same gender disparity.

As a woman of color living in a new country and working in a male-dominated technology industry, it was easy to feel like I didn't belong. I was proud of my accomplishments, but I saw nothing explaining why I should be an anomaly. It dawned on me that the reason so few women work in technology isn't a lack of aptitude, it's that they have a scarcity of role models, mentors, and sponsors showing them that they can.

I knew I wanted to be that role model, but I wasn't sure exactly what route to take. One of my former college professors at the University

of Maryland used to encourage me to become an educator, insisting that my drive and skillset were a perfect fit for the classroom. I ignored him at first, because I knew my future was in the corporate world. But, after several years in that life, his words stuck with me, and I eventually earned a Ph.D. from the Robinson College of Business at Georgia State University, started my journey as an Assistant Professor at Kennesaw State University, and found my true calling.

While one mentor helped me discover my love for teaching and mentoring, another – Kennesaw State’s current president Kat Schwaig – set me on the path to launching the first-of-its kind MSHMI program. In 2009, I was a tenure-track assistant professor when Kat, who was a dean at the time, recommended me to sit on the Atlanta Chamber of Commerce’s healthcare IT leadership council.

Through these 7:30 am meetings in downtown Atlanta, I was able to work with several leaders in Georgia’s healthcare and tech worlds. Then-Gov. Casey Cagle asked the chamber to help grow the state’s healthcare IT workforce and I had an idea. I took my plans to Kat for a novel graduate degree that addresses the challenge of creating a health informatics workforce, and she gave unwavering support. Suddenly the wheels were turning and the vision took flight. She cleared roadblocks, allocated resources, and advocated for me and the program at every step of the process – she exemplified servant leadership and much of who I am today is because of her advocacy.

Thanks to Kat’s support and vision, the MSHMI program has created opportunities for more than 250 students. With women representing half of the program, we are helping bring gender parity to the healthcare information technology space and creating a world where women and young girls know they are welcome.

With your support, we could do even more. Your contribution will directly support scholarships that close the financial gap for students as well as professional certifications, access to networking events and industry conferences, and a variety of other professional development opportunities.

Not too long ago, I felt like an outsider in my field. Today, thanks to the many people who believed in me, I’m watching hundreds of women succeed in that same industry. Meanwhile, the reach and impact of our program continues to

grow across national boundaries spreading into Europe, Africa, and Asia.

A decade after we started this project, our work is being validated by the industry with awards and recognitions I could have only dreamt of. I’m truly honored and privileged to have recently been named Women in Technology’s Woman of the Year for STEAM Education, Technology Association of Georgia’s Tech Leader of the Year, and a member of TITAN 100 Georgia.

With every success comes a responsibility to be the voice for the voiceless. None of my success would have been possible without support from the army of men and women who hold me high, believe in me, and inspired me to shatter glass ceilings. I hope you will join me in supporting the next generation of healthcare IT leaders and in giving opportunities to succeed to the mentors, advocates and cheerleaders of tomorrow.

Sweta Sneha, Ph.D.
Executive Director, Master of Science
in Healthcare Management and
Informatics
Professor of Information Systems
Kennesaw State University



Scan now to make a one-time or recurring contribution to the MSHMI program.

Simply select “Healthcare Management Informatics Program” from the dropdown menu.

Celebrating Cohort 7



Keynote Speaker

Robert H. Zondag

Senior Manager, Wipfli



Leadership Experience and Expertise

Robert H. Zondag boasts a track record with over 25 years of leadership experience. His journey has spanned both entrepreneurial ventures and executive roles. Throughout his career, he has honed his expertise in several critical areas, including strategic planning, capital planning, divestitures/acquisitions, and enterprise risk management.

Appointments and Strategic Engagements

Robert's commitment to excellence extends to his public service. He has been appointed to the State of Wisconsin Medical Examining Board, where he contributed his insights to matters related to medical licensure and examination. Additionally, he served as a Commissioner on the Interstate Medical Licensure Compact Commission, facilitating streamlined licensure processes across state lines. His involvement in ongoing health care strategic planning engagements for various providers across the United States underscores his dedication to improving healthcare systems.

Financial Services and Banking

As the Managing Partner and CFO of a financial services/municipal advisory firm, Robert oversaw the firm's operational and financial matters. Furthermore, he founded a community bank in the greater Milwaukee area, where he assumed responsibility for investments, operations, treasury, and compliance. His leadership in these financial institutions reflects his ability to navigate the evolving and complex financial landscape.

Treasury Management and FinTech Advisory

Robert's influence extends beyond traditional banking. He held an executive leadership role in Treasury Management for a Midwest regional financial institution. Additionally, he served as an advisor and board member for a consulting firm focused on FinTech companies. His insights into emerging financial technologies drive innovation and transformation within the industry. He also applies this background to helping healthcare clients with their digital experience and health informatics.

Blockchain Technology and Regulatory Compliance

Also, in the realm of technology, Robert served as a board member for a Software as a Service (SaaS) company. This company specialized in document management, leveraging blockchain technology. Their solutions cater to highly regulated industries, emphasizing compliance, security, and efficiency. Robert's involvement underscores his forward-thinking approach and commitment to staying at the forefront of industry trends while understanding the complex regulatory environment in which financial services and healthcare operate.



Our Story

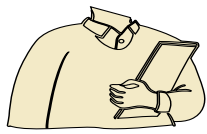


Our Students



Healthcare Management & Informatics (HMI): Aspire to More

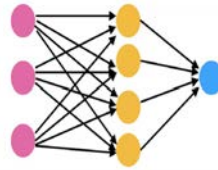
ACADEMIC INNOVATION



250+ Students



The Only Program of its Kind

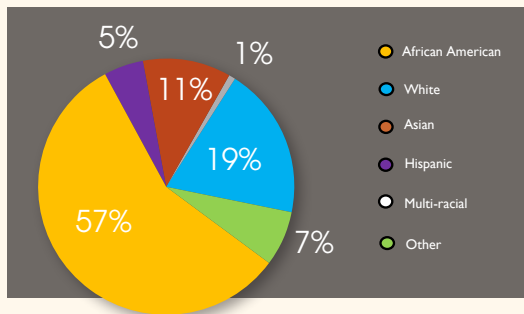


Interdisciplinary Across Four Colleges



Textbooks, Software, Professional Membership

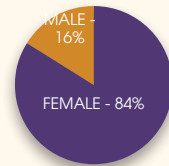
DIVERSITY, EQUITY, INCLUSIVITY



6 Continents



31 Years Average Age



Gender Equality

No GMAT/GRE

HMI FOOTPRINT ON DIGITAL HEALTH



Student Awards/
Accolades
HIMSS, SONY,
TAG



Industry
Collaborations



Certifications
AHIMA, CAHIM,
R, SAS, etc.



Publications



Faculty
Fellowships



Graduate
Research
Assistantships

HMI IN GEORGIA: BY THE NUMBERS*

491 Digital Healthcare Companies

44,000 Employees

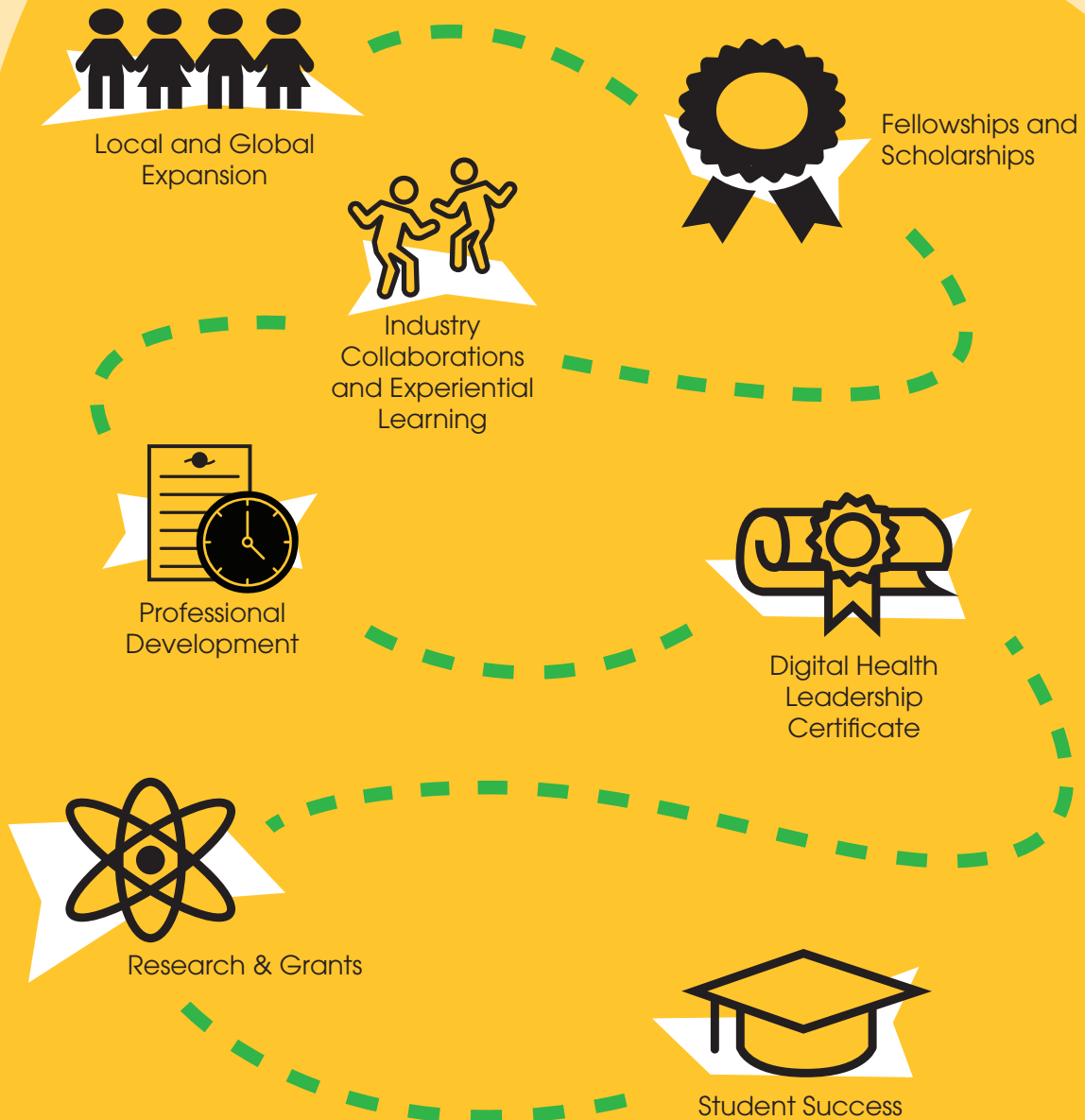
\$11B

in Annual Revenue

*Data from Technology Association of Georgia

Our Vision Forward

5-Year Roadmap



The first-of-its-kind **Master of Science in Healthcare Management and Informatics** program is a global leader in developing the next generation of healthcare technology innovators. The program's immersive learning approach means students receive countless professional development opportunities and engage directly with business and community partners to solve modern healthcare challenges.

MSHMI Graduating Class – Cohort 7



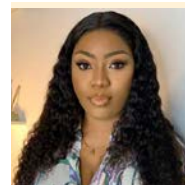
Anita Ajuebor
Quality Improvement
Fellow, Cincinatti
Children's



**Nathaniel
Blackmon IV**
MSHMI Candidate



Heighley Bodden
RN, Wellstar



Vivian Chima
Graduate Research
Assistant, HMI



Tiana Cliett
RN, Northside
Hospital



Tonya Condon
Float Nurse, Wellstar



Brennan Couch
Sr. Issue Resolution
Specialist,
LocumTenens



Christopher Cross
Hospital Volunteer,
Wellstar



Andre Derilus
Sr. Buyer, Wellstar



Mallory Embry
Certified Surgical
Technologist, Wellstar



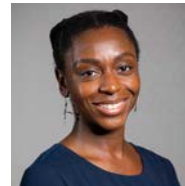
Jordyn Fleming
Registered Behavior
Technician, Children's
Healthcare of Atlanta



Dichel Graves
Lab Assistant,
United Digestive



Calise Hammonds
Front Desk Receptionist,
Peachtree Immediate
Care



Mariah Hubbard
MSHMI Graduate



Carter Hughes
Certified Athletic
Trainer & Physician
Extender, Emory Health



Joy Ihedioha
Patient Care
Coordinator, Tend



Saiyida Jabeen
Graduate Research
Assistant, HMI



Kameron Jackson
Licensing Intern



Ann Johnson
MSHMI Graduate



Kay Kellerhouse
Sr. Business Information
Consultant, Elevance
Health



Nomana Khan
Sr. Director,
Maximus Public
Health



Nickya King
Daycare Teacher,
ABC Kids Academy



Grete Lawrence
Patient Care
Coordinator,
Emory Healthcare



Caroline Lazaro
RN/Electronic Medical
Record Resource Nurse
Prec. III, Emory Healthcare



Dabnei LeBlanc
Oncology Pre-Sales
Software Planner,
Varian

MSHMI Graduating Class – Cohort 7



Angelica Lewis
Public Health Educator,
GA Department of
Public Health



Divya Mamtara
Project Management
Intern,
Elevance Health



Olu Mbanugo
Pioneer Country
Business Management,
Denk Pharma



Shanil McFarlane-Fuller
Clinical Research
Coordinator, Emory
University



Shaniqua McNeil
Infusion Nurse,
Shepherd Center



Colette Obazee
Graduate Research
Assistant, HMI



Deborah Ojumu
Healthcare
Administrator, A&S
Healthcare



Dipti Paldhikar
General Dentist, A
Private Clinic, Inc.



Khushbuben Patel
Incoming Data
Analyst Intern,
Erlanger



Jaline Paniagua
Clinical Research
Coordinator, U.S.
Renal Care



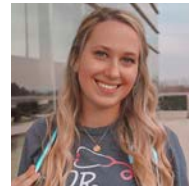
Kalyn Simmons
Account Manager,
McKesson



Olubunmi Simpson
Hospital Medicine
Lead Clinical
Informaticist, Wellstar



Zainab Suara
SCA Repeals Rep,
Elevance Health



Denise Thomas
Sr. Systems Analyst,
Northside Hospital



Elizabeth Vasquez
Sr. Applications
Analyst,
Northside Hospital



Kesjiah Wilcher
Graduate Research
Assistant, HMI



Brianna Williams
Behavioral Therapist,
Achievements ABA
Therapy

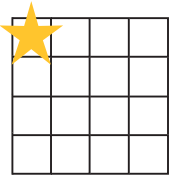


Natasha Williams
Microbiologist, CDC

COLLABORATIVE PARTNERSHIPS: ACADEMIA AND INDUSTRY PARTNERS SOLVING REAL DIGITAL HEALTH CHALLENGES



The Master of Science in Healthcare Management and Informatics Program thanks each of our industry partners for making their resources and expertise available to these projects. Their contributions are essential in empowering our student researchers to develop solutions to real-world digital healthcare challenges and improve patient outcomes.



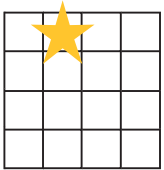
The Healing Power of Data: A Novel Data Visualization Solution Which Can Help Improve Patient Quality and Safety Through Data Democratization

Public health informatics plays a pivotal role in transforming healthcare delivery and improving population health outcomes. The National Healthcare Safety Network (NHSN) is a web-based system created and managed by the Center for Disease Control and Prevention (CDC) and utilized by both the CDC and healthcare facilities to monitor data, such as healthcare-associated infections (HAIs), antimicrobial use and resistance, and other healthcare events and processes. Although the data is readily available, it is usually in a raw format, which makes it difficult for organizations to analyze and draw conclusions. Diagnose Data, Inc. seeks to employ this informatics data in an interactive dashboard where users can visualize and make inferences on improving patient and procedure outcomes hospital-wide.

Students: Ann Johnson, Calise Hammonds, Bunmi Simpson

Faculty Advisor: Sweta Sneha, Ph.D.

Industry Sponsor: Diagnose Data, Inc. – Dr. Mickey Bansal



Unraveling the Influence of Social Determinants of Health

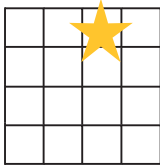
This project delves into the intricate relationship between social determinants of health (SDOH) and their profound effects on individual and community well-being. Through an examination of various socioeconomic, environmental, and cultural factors, we elucidate how SDOH shape health outcomes and disparities at Northside Hospital for the first quarter of 2024. By analyzing access to healthcare, education, employment, housing, and social support systems, we unveil the multifaceted nature of SDOH and their significant implications for public health policy and practice. This comprehensive understanding underscores the urgent need to address and track SDOH to promote health equity and enhance overall population health.

Students: Denise Thomas, Elizabeth Vasquez

Faculty Advisor: Sweta Sneha, Ph.D.

Industry Sponsor: Northside Hospital – Melissa Lamb, Elizabeth Cunningham



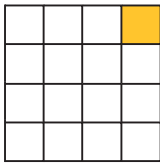


Predictive Analysis of Youth Risk Behavior and Suicidal Ideation Post-COVID

This project outlines the examination of mental and emotional health among adolescents and youth, emphasizing the critical role of mental well-being in their overall development. Survey data reveal significant effects of mental health conditions, such as depression and anxiety, on young people's life quality, influencing their social interactions, behavior, academic interest, and decision-making processes. The COVID-19 pandemic has further intensified these issues, significantly impacting young people's health. Research, including systematic reviews and cross-sectional surveys, has started to assess the psychological toll of COVID-19 on children and adolescents, showing shifts in lifestyle and health behavior risks as they move towards adulthood. The analysis also highlights the influence of behaviors like decreases in physical activity and healthy eating on their mental health. To tackle these issues, a broad range of solutions and collaborative efforts are necessary, aiming to foster environments that promote healthy growth and empower young people to make well-informed health decisions.

Students: Andre Derilus, Deborah Ojumu, Jordyn Fleming, Mariah Hubbard, Nathaniel Blackmon IV, Kesjiah Wilcher

Faculty Advisors: Austin Brown, Ph.D., Sweta Sneha, Ph.D.



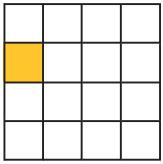
Pursuing a Paperless Future in Health Insurance Digital Communication

In today's digital landscape, the insurance industry is experiencing a substantial transformation propelled by technological progress. This research paper explores the implementation of digital communication strategies within an insurance provider's framework, focusing on enhancing consumer experience and engagement. Leveraging a survey-based feedback approach, the study aims to evaluate the effectiveness of digital communication channels in meeting consumer needs and preferences.

Students: Angelica Lewis, Natasha Williams, Anita Ajuebor

Faculty Advisor: Sweta Sneha, Ph.D.

Industry Sponsor: Elevance Health – Vinita Shrivastav, John Zotalis, and Ken Stark



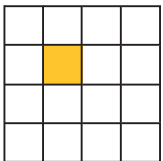
Ambient Listening AI Application in the Emory Healthcare Network

Ambient listening AI applications are becoming increasingly commonplace in healthcare. Emory healthcare has taken the initiative to implement ambient listening AI through Abridge which has been described as “a healthcare company whose Generative AI solutions transform raw audio of doctor-patient conversations into first drafts of clinical notes, combating the leading cause of physician burnout.” As Emory Healthcare implements this novel technology, the full impact on physicians is yet to be fully realized. This project will identify if there is a correlation between the use of ambient AI, average note time and billing level. Physician perception post- Abridge implementation will be evaluated to identify whether the perceived performance of Abridge was helpful in decreasing physician workload and if physician perception matched with the abridge data analysis.

Students: Carter Hughes

Faculty Advisor: Sweta Sneha, Ph.D.

Industry Sponsor: Emory Healthcare – Jason Atkins and Guru Patel



Standardized Data: The OMOP Common Data Model

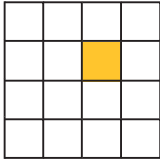
The Observational Medical Outcomes Partnership (OMOP) Common Data Model (CDM) provides a standardized healthcare data organization and analysis framework, ensuring consistency and interoperability across various systems. It employs relational database tables representing patient information, treatments, and more, integrating terminologies from established coding systems like SNOMED CT and ICD-10. The adoption of OMOP CDM streamlines data integration, promotes collaboration, and supports large-scale observational studies, enhancing evidence-based decision-making in healthcare. Non-standardized data in healthcare organizations leads to challenges such as data fragmentation, interoperability issues, and increased administrative burden. Financial implications for patients and organizations include higher costs, errors, and regulatory non-compliance. Standardizing data in healthcare enables interoperability, streamlines processes, improves data quality, fosters innovation, and enhances patient care. Statistics show potential cost savings, error reduction, improved outcomes, and accelerated research with data standardization in the United States. Education, policy support, technology infrastructure, collaboration, incentives, patient engagement, and continuous improvement efforts are crucial to ensure widespread adoption.

Students: Shanil McFarlane-Fuller

Faculty Advisors: Sweta Sneha, Ph.D.

Industry Sponsor: Emory Healthcare – Matthew Holland





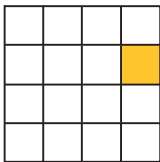
Streamlining Employee Benefits Management with SQL and PowerBI

This paper details the integration of SQL Server, SQL Spreads, and PowerBI into employee benefits management, aimed at replacing outdated manual processes with automated solutions to enhance operational efficiency and accuracy. It discusses project design, implementation challenges, and strategic solutions, including the development of user-friendly interfaces and data automation techniques. The paper concludes with a prospective look at potential advancements such as direct database integration and artificial intelligence enhancements, poised to set new standards in the industry.

Students: Kay Kellerhouse, Mallory Embry, Saiyida Zainab Jabeen

Faculty Advisors: Soo Il Shin, Ph.D., Sweta Sneha, Ph.D.

Industry Sponsor: Engagement Health Group – Jackie Warren, MD, RD, LD



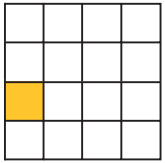
CareFront Office Solutions: Revolutionizing Healthcare Staffing with Jackson Healthcare

In the dynamic realm of healthcare administration, accurately estimating the cost of training business office staff in hospitals presents a formidable challenge, exacerbated by high turnover rates and a myriad of variables ranging from personnel expenses to equipment purchases. This abstract delves into this complexity and explores potential solutions offered by CareFront Office Solutions; a pioneering partner dedicated to reshaping healthcare business office staffing. With hospitals under increasing pressure to recruit and retain competent administrative professionals, the inability to accurately budget for training initiatives hampers their ability to allocate resources effectively. CareFront's innovative approach aims to revolutionize the healthcare staffing landscape by leveraging industry expertise, a specialized talent pool, and innovative recruitment strategies. By offering tailored staffing solutions that prioritize client satisfaction, operational efficiency, and patient care, CareFront presents a compelling opportunity for hospitals to streamline processes, optimize resources, and enhance the quality of healthcare delivery amidst the evolving demands of the industry. As hospitals grapple with the challenges of high turnover and fluctuating staffing needs, partnering with CareFront provides a strategic advantage, enabling them to access top-tier professionals and mitigate the financial risks associated with training and recruitment. Through meticulous candidate sourcing, rigorous screening processes, and ongoing support, CareFront empowers hospitals to navigate the complexities of healthcare staffing with confidence and resilience.

Student: Brennan Couch

Faculty Advisor: Sweta Sneha, Ph.D.

Industry Sponsor: LocumTenens.com – Jeannie Sanders

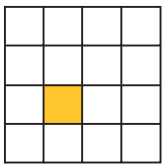


Nurse-to-Patient Ratios and Their Impact on Staffing and Technology in Critical Care Units: An Integrative Review

Critical care units are essential components of healthcare facilities, providing specialized care to patients with life-threatening illnesses or injuries. Nurse-to-patient ratios play a pivotal role in determining the quality of care delivered in these settings. This integrative review synthesizes existing literature to explore the impact of nurse-to-patient ratios on staffing and technology utilization within critical care units. Through a comprehensive search and analysis of relevant literature, this review explores the relationship between nurse staffing levels, patient outcomes, and the integration of technology in critical care environments. These findings emphasize the complex relationship between nurse staffing ratios, patient safety, workload management, and the adoption of technological components to support these factors. Implications for nursing practice, policy development, and future research are discussed to improve staffing strategies and enhance the efficiency of care in critical care settings.

Students: Tiana Cliett

Faculty Advisors: Margot Hedenstrom, Ph.D., Sweta Sneha, Ph.D.



Wellstar Discharge Project

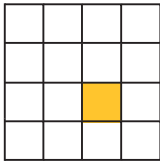
The healthcare industry faces persistent challenges in patient discharge, marked by communication breakdowns and inefficiencies, resulting in compromised care and readmissions. This study explores hospital discharge workflows, emphasizing the need for enhanced processes to ensure patient safety and improved outcomes. Through data analysis, it compares traditional and virtual discharge processes, aiming to identify areas for improvement and contribute to ongoing optimization efforts. By synthesizing insights from literature reviews and FMEA applications, the research aims to inform initiatives that enhance discharge processes, leading to better patient outcomes and healthcare delivery efficiency.

Students: Brianna Williams, Heighley Bodden, Joy Ihedioha, Nomana Khan, Tonya Condon, Zainab Suara

Faculty Advisors: Maria Valero, Ph.D., Valentina Nino, Ph.D., Sweta Sneha, Ph.D.

Industry Sponsor: Wellstar Health System – Susan Thurman and LeeAnna Spiva





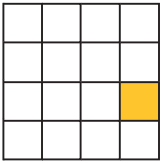
Data Profile Project

The Data Profile Project, sponsored by McKesson and undertaken as a capstone initiative in the MSHMI program, aims to redefine the approach to customer data within the organization. Led by project owners Kalyn Simmons, Austin Black, and Claudia Arostegui, the project focuses on assessing data completeness and quality beyond mere data reception. By establishing a self-service tool and automated data alarms, stakeholders gain the capability to proactively monitor and maintain data integrity. The core project group collaborates to address current gaps in understanding data flow, prioritize data quality, and transition from reactive to proactive problem-solving approaches. The project's scope encompasses defining data inclusion criteria for the Minimum Viable Product (MVP), establishing clear data quality benchmarks, developing DataMart tables and views, and constructing a Power BI dashboard prototype for visualization. A structured timeline delineates project milestones, from kickoff and planning through documentation, training, and project review. Ultimately, the Data Profile Project strives to revolutionize McKesson's approach to customer data, ensuring not only its reception but also its quality, completeness, and proactive management. This abstract encapsulates the project's objectives, methods, and anticipated outcomes, underpinning its significance in advancing data-driven healthcare management practices.

Student: Kalyn Simmons

Faculty Advisor: Sweta Sneha, Ph.D.

Industry Sponsor: McKesson – Kimberly Portee, Claudia Arostegui, Tiffany Crawford, Omally Monahan, and Austin Black

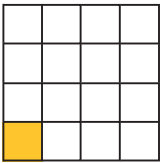


Youth Mental Health Crisis: Services and Response

This research aims to investigate the multifaceted factors contributing to mental health crises, with a specific focus on both the general and pediatric population. We explore socio-economic, cultural, biological, and environmental aspects that influence mental well-being, aiming to identify interventions for crisis prevention, management, and support. The urgency of this study is underscored by the increasing prevalence of mental health challenges among the population globally, including anxiety, depression, neurodevelopmental, and behavioral disorders. Limited access to timely mental health services exacerbates these issues, leading to self-harm, substance abuse, and suicide risks. Our investigation emphasizes the critical need for comprehensive strategies that integrate data-driven approaches, evidence-based interventions, and policy reforms. By addressing gaps in access and advocating for systemic changes, we strive to improve the quality of life and future prospects for this vulnerable population. This research underscores the importance of collaborative efforts among first responders, healthcare providers, educators, policymakers, and communities to prioritize mental health and create supportive environments for everyone's emotional, social, and academic well-being.

Students: Nickya King, Dichel Graves

Faculty Advisors: Dominic Thomas, Ph.D., Shery Ni, Sweta Sneha, Ph.D.



Streamlining Billing Code Updates in Healthcare: A Project Management Approach

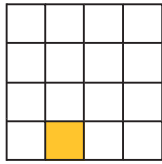
Abstract: Inaccurate and inefficient billing processes are a challenge in healthcare. This project implemented a project management framework to improve the update process for new professional and facility fee schedule codes and code denials on provider agreements. The approach focused on clear communication, collaboration, and a structured workflow. By treating the update process as a project, the initiative aimed to streamline operations, reduce errors, and achieve timely updates. Data from the previous year revealed a backlog of outdated codes. The project implemented the creation of detailed guides ("Plays") for each team involved, followed by a comprehensive "Playbook" outlining the overall process. This resulted in a projected reduction in backlog and improved communication among teams. The project demonstrates the value of project management in enhancing the accuracy and efficiency of billing code updates in healthcare, fostering better provider relationships, and ultimately, improving patient care.

Student: Divya Mamtara

Faculty Advisors: Sweta Sneha, Ph.D., Andrea Taylor

Industry Sponsor: Elevance Health – Vinita Shrivastav, John Zotalis, and Ken Stark





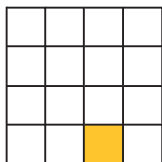
Enhancing Infection Control in Nursing Homes: A Syndromic Surveillance Dashboard System

In the wake of the COVID-19 pandemic, the vulnerabilities of nursing homes in effectively monitoring and managing infection-related illnesses have been starkly highlighted. This project aims to address this pressing need by developing a syndromic surveillance dashboard system tailored to the unique requirements of nursing home settings. Through a comprehensive literature review and stakeholder engagement, key insights have been gathered to inform the design and development of the dashboard system. Leveraging collaboration with RadarX, the dashboard system will enable real-time monitoring of infection-related symptoms among nursing home staff, enhancing infection control practices and staff wellness. The project's methodology includes pilot testing in select nursing homes to evaluate effectiveness, usability, and impact on infection control measures. By focusing on the intersection of healthcare, technology, and data analytics, this project seeks to contribute to improved infection control measures and patient safety in nursing home environments.

Student: Vivian Chima

Faculty Advisors: Yifan Zhang, Ph.D., Sweta Sneha, Ph.D.

Industry Sponsor: RadarX – Saurabh Shrivastav



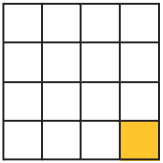
DHN and CHIME India Digital Health Trends and Outlook for 2024

The Digital Health News (DHN) and CHIME India Annual survey delve into India's dynamic healthcare landscape, focusing on digital transformation. Through a purposive sampling approach, influential leaders from 75 hospitals were targeted across regions and organization types. The survey, comprising 15 questions, explored digital health priorities, IT spending, and the transformative impact. Key findings reveal a strategic emphasis on Electronic Health Record (EHR) systems and an emerging interest in AI adoption. Challenges include in-house capabilities and EHR integration hurdles. Despite progress, regional and organizational disparities persist, signaling opportunities for collaboration and innovation. The survey serves as a catalyst for informed discussions, shaping the future of digital health in India.

Student: Jayline Paniagua

Faculty Advisor: Sweta Sneha, Ph.D.

Industry Sponsor: ScaleHealthTech – Vishnu Saxena



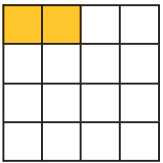
Streamlining Success: Navigating Epic BCA Optimization for Maximum Impact

In today's healthcare environment, hospitals encounter multifaceted challenges, ranging from natural disasters, technology outages, and security breaches to pandemics. Developing a robust business continuity plan (BCP) is critical for hospitals to ensure seamless operations and patient care during unforeseen disruptions. This research paper analyzes the elements of the current state of the Shepherd Center's business continuity plan and proposes strategies for re-optimization utilizing Epic's Business Continuity Access strategy and support guide. By conducting a thorough assessment of the current BCP and department-specific analysis, this paper will provide practical recommendations for boosting resilience and adaptability in hospital operations. Implementing these strategies will help hospitals effectively manage crises and ensure long-term success.

Student: Shaniqua McNeil, BSN, RN

Faculty Advisor: Sweta Sneha, Ph.D.

Industry Sponsor: The Shepherd Center – Kristin Ndiaye and Atul Kanvinde



Transforming Healthcare: The Responsible Integration of AI in the Internet of Medical Things

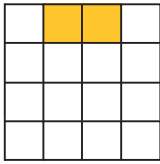
The healthcare landscape is on the cusp of a revolution fueled by the transformative power of integrating Artificial Intelligence (AI) with the Internet of Medical Things (IoMT). This powerful duo holds immense potential to reshape patient care by offering exciting possibilities. This paper explores responsible integration practices, encompassing ethical considerations, cutting-edge technological advancements, and best practices that will guide successful implementation. We reviewed past research on responsible integration and identified key findings which include establishing robust data governance frameworks, ensuring fairness and transparency in AI algorithms, adhering to strong ethical guidelines, and fostering collaboration among all stakeholders, contributing to successful integration. There are several challenges in the way of general adoption, including data quality, interpretability, and the critical concerns of patient privacy and security. By addressing these challenges and adhering to responsible practices, healthcare organizations can leverage the power of AI and IoMT to improve patient outcomes and usher in a new era of personalized healthcare delivery.

Students: Caroline Lazaro, Dabnei LeBlanc, Grete Lawrence, Colette Obazee, Dipti Paldhikar

Faculty Advisor: Sweta Sneha, Ph.D.

Industry Sponsor: AMIA Fellowship





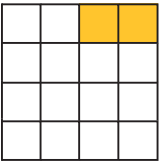
Healthcare Analytics for Companies Revenue Outbreak Prediction

This study will be predicting revenue outbreaks for a company that offers substantial advantages, promoting both learning and professional development. Given the multitude of revenue figures among various companies, healthcare analytics can provide valuable insights into their financial performance. Understanding how businesses invest their money becomes crucial in light of the increasing concerns about annual revenues. Engaging in this experience not only broadens one's knowledge and refines analytical skills but also offers practical business insights, propelling individuals' careers to new levels in the field of data analytics.

Student: Khushbuben Patel

Faculty Advisors: Sweta Sneha, Ph.D., Andrea Taylor

Industry Sponsor: Technology Association of Georgia (TAG)



Unlocking the Potential of Digital Health in Georgia; Insight from TAG Digital Health

The state of Georgia with a population of over 10.7 million inhabitants hinged on its booming economy, affordable cost of living, and commitment to education, is ranked as the 11th fastest-growing state in the United States, home to 18 Fortune® 500 Headquarters and 32 Fortune® 1000 Headquarters and is proud to be the home to many of the healthcare industry's most innovative and impactful technology companies. "What we are building is more than just a world headquarters campus...we are building a work environment that replicates the innovative experiences we create for our customers every day and will help ensure one world-class work environment." - Bill Nuti, Former President, CEO & Chairman of NCR. As a way of supporting the economy and the developmental drive of the state, the Technology Association of Georgia (TAG), through its subsidiary (TAG Digital Health Society), has constituted the TAG Digital Health Ecosystem to serve as a living directory and showcasing the digital health companies who have chosen Georgia as their home. This project aims to profile the existing TAG Digital Health ecosystem database. A data model will also be created to provide others with a visual representation in support of the profiling to ensure that there is a standardized database for digital healthcare companies in the state of Georgia. Profiling as used in this context means matching companies/organizations' basic information (brief profiles, contact information, social media handles, employees, and revenue size) with their true identities and physical presence. This central hub will serve as a resource for digital health companies seeking potential partners, investors who are looking for digital health companies to invest, healthcare providers seeking digital healthcare solutions, healthcare companies considering a move to Georgia, job seekers exploring new opportunities, and a data point for those considering research in digital healthcare.

Student: Olu Mbanugo

Faculty Advisors: Sweta Sneha, Ph.D., Andrea Taylor

Industry Sponsor: Technology Association of Georgia (TAG) (Digital Health)



MSHMI Cohort 8

Kayla Adams – Access Operations Coordinator, Children’s Healthcare of Atlanta

Andrea Armstrong – Intensive Care Unit Technician, Emory Healthcare

Ashley Barclay – Provider Capacity Coordinator, Children’s Healthcare of Atlanta

Constance Briggs - Patient Care Technician, Wellstar Atlanta Medical Center

Maranie Brown – Vice President, BlackRock

Dalisia Brown – Patient Access Associate, Children’s Healthcare of Atlanta

Shirlee Burton – Center Operation Director, Concentra

Paris Carter – Creditable Coordinator, Friends of Disabled Adults and Children

Katherine Chadwick – Graduate Research Assistant, Kennesaw State University

Tevin Craft – Cardiac Rehab Exercise Physiologist, Northside Hospital

Kelli Craig – Interventional Radiology Nurse, Northside Hospital

Adama Diallo - Business Owner, Birth Doula Services

Shania Fernandes - Dental Assistant, Artistic Dentistry of Atlanta

Jervontae Gates - Local Travel RN, Emory University Hospital

Christopher Graff - Army Reserve Career Counselor, United States Army Reserve

Hannah Griffis - Patient Liaison, Northeast Georgia Imaging Center

Kiera Hughes - Medical Assistant, Clinic Lead, Upperline Health-Village Podiatry

Jalyn Jackson - Medical Records Specialist, HealthMark Group

Eric Jaenichen - Integration Program Manager, Athena Health

Alfreda Jayblee Young - Pro Associate, The Home Depot

Jasmine Johnson - Interventional Radiology Nurse, Northside Hospital

Michaelia Jonas - Healthcare Assistant, Dunwoody Pediatrics

La’Kea Kelly - Assistant Manager, Wellstar Health System

Alekhya Koduri - Dentist, Dr. Madhukar Reddy Dental Clinic

Sydney Lindsay - Behavioral Health Technician, Children’s Healthcare of Atlanta

Salud Lopez - Occupational Health Nurse, Engineered Floors

Moulika Markonda - Duty Medical Officer, Yashoda Super Specialty Hospitals, Hyderabad

Brandon McKie - Injury Prevention, Select Medical

William Mikel - Implementation Specialist, Meditech

Maryann Mugo - Physician/Staff Endocrinologist, Atrium Health Floyd Medical Center

Ricnesha Priester - Resident Care Coordinator, Brookdale Green Hills Cumberland

Ashleen Randhawa - Partners in Health Engage, University of California Riverside

NeCole Reese - Associate Medical Writer, Merck

Ajah Rountree - Registered Behavior Technician, Able Kids

Macy Roy – MSHMI Candidate

Bernadette Serebour - Associate Consultant, Oracle

Jalyn A. Smith - Radiology Assistant, Quantum Radiology

Jalyn I. Smith - Front Office Referral and Physician Scheduler Specialist, Wellstar Kennestone OB/GYN

Seher Syed - Medical Assistant, Marietta Family Medicine

Mubeen Tariq - Lab Technician, Archer-Daniels-Midland Company

John Taube - Counselor Assistant BHT Lead, High Focus Centers Johns Creek

Ilhem Touati - Paraprofessional, Cobb Country School District

Linsey Trinh – MSHMI Candidate

Jerrika Washington - IV Pharmacy Technician, Emory Healthcare

Deanna Watkins - Medical Assistant, Dermatology and Surgery Specialists of North America

Katherine Wolz - Feeding Specialist, Children’s Healthcare of Atlanta

MSHMI Cohort 6

Ziyah Anderson—Intake Specialist, Attento Counseling Practice
Brandii Baugh—TeleSitter Supervisor, Wellstar Health System
Cameron Broadnax—Data Entry Processor, Wellstar Health System
Christopher Burgess—Clinical Informatics Specialist, Wellstar Health System
Hansa Das—Graduate Research Assistant, KSU
Clarette Epps—Data Reporting and Analytics Consultant, Kaiser Permanente
Mark Greenberg—Care Resource Coordinator, Kaila and Solomon Law Group, LLC
Jazmyne Griffin—Medical Case Manager, Cherokee Funding
Bryana Higginbotham—Medical Records Coordinator, Kaila and Solomon Law Group, LLC
Poornima Shahitha Katragadda—MSHMI Candidate
Mikaela Keith—Business Data Analyst, KSU
Miriam (Mele) Kwon—Registered Nurse, Emory Healthcare
Jaclyn Maney—BoltCare Communications Manager, Bolt Today

Joli Miracle—Senior Nurse Case Manager, US Army, TAMC Soldier Recovery Unit
Lisero Mugula—Graduate Research Assistant, KSU
Farah Muttardy—MSHMI Candidate
Nicole Ogbuagu—Public Health Advisor, Center for Disease Control and Prevention
Richard Ogniewski—MSHMI Candidate
Arleen Joy Patinga—Patient Services Specialist, Resurgens Orthopaedics
Jovelle Patterson—MSHMI Candidate
Melissa Rivera—MSHMI Candidate
Tyler Simon—MSHMI Candidate
Marci Sparrow—Medical Case Manager, Paradigm
Elie Tannouri—MSHMI Candidate
Bonnie Theresias—Practice Manager, Wellstar Health System
Riley Tucker—MSHMI Candidate
Ashana Vaudreuil—Digital Specialist, UnitedHealth Group
Janice Wallar—Registered Nurse, Atlanta Interventional Institute
Jasmine Williams—MSHMI Candidate

MSHMI Cohort 5

Yesake Abaye—Oncology Pharmacist, Northside Hospital Cancer Institute
Reshard Abrams—MSHMI Candidate
Glenice Arnett—Associate Application Analyst, Wellstar Health System
Humera Asfandiyar—Graduate Teaching Assistant, Kennesaw State University
Desmond Ayika—Data Analyst, Dornier MedTech
Megan Bove—Registered Dental Hygienist, Michele R. Chartier, DDS, PC
Lashonte Browne — Registered Respiratory Nurse
Ann Do—Registered Respiratory Therapist, Children's Healthcare of Atlanta
Eric Gaare—Billing Analyst, Compass Dermatopathology, Inc.
Reddy Bhavya Gudi— Information Technology Auditor Intern, Assurant
Talha Hashmi—PARS Fleet Logistics Specialist, PARS Vehicle Relocation and Transport
Kimberly High—Sr. Consultant, Staff Technologist, Booz Allen Hamilton
Jada Jackson—Human Resource Specialist-TCF Trainee, Veterans Health Administration

Daya Kansagra—Data Analytics Intern, Assurant
Brandon Kenemer—Public Health Analyst, Centers for Disease Control and Prevention
Pooja Mistry—Registered Nurse, Wellstar Health System
Nicole Molinary—Information Technology Intern, Wellstar Health System
Marquis Morgan—Ops Manager, Hub/Linehaul, FedEx Ground
Neelam Nosheen—Healthcare Product Manager, Ophthalmics, LLC
Emmanuel Orekoya—JR Financial Analyst, Endeavor
Michelle Padelford—Data Analyst, Partners Cooperative
Janna Pruiett—Senior Technical Support Engineer, VMware
Helen Schoening—Registered Respiratory Therapist, Piedmont Healthcare
Lee Solomon—Epic Analyst, Emory Healthcare
Beana Stone—Associate Account Executive, E Squared Communications
Oana Tudorache—MSHMI Candidate
Usen Usen—MSHMI Candidate
Shakaria Wilson—Implementation Specialist, Meditech

MSHMI Cohort 4

Deborah Adedeji—Pharmacist,, Walmart
Emmanuel Adeyemi—Pathology Lab Manager, Marietta Dermatology & Skin Cancer Center
Temitope Balogun—Store Manager, Kohl's
Rodney Brown Sr.—Sales Consultant, Talent Innovation, AMS
Anastassia Cabrera—Operations Specialist, CRH Anesthesia
Kennedy Craig—IT Coordinator, Aveanna Healthcare
Ijeoma Ikedum—Medical Provider
Tanesha Jones—PhD Candidate, University of Washington
Rahab Kairu—Staff Accountant, North America Transport INC
Chelsey King—Nurse Medical Management, Anthem
Brandon Lade—Interoperability Application Analyst, Wellstar Health System
Akasha Lawrence—Human Resource Representative,

Wellstar Health System
Roxanna Lopez—Graduate, MSHMI
Emily Mantooth—Coordinator Physician Based Programs & VBC, Northside Hospital
Lorna Migiro—Graduate, MSHMI
Bernice Ndungu—SPOC Supervisor, DeKalb County Board of Health
Chineze Okpala—HR Coordinator, Divine Touch
Alina Panjwani—Data Warehouse Developer, Salient Management Company
Sri Varun Thalla—Project Manager, Cognizant
Monica Vickery—Lead Rehabilitation Aide, Wellstar Health Systems
Jacqueline Warren—Director of Analytics, Corporate Health Partners
Kara Wright—Patient Access Supervisor, Wellstar Health System

MSHMI Cohort 3

LaMeeya Bumphus—Patient Access Specialist, Wellstar Health System
Neha Burse—Data Analyst, Good Samaritan Health Center of Cobb
Victor Casnova—Rx Shift Supervisor, CVS Health
Modupe Coley—Clinical Data Analyst, Oncology Analytics Inc.
Raul Contreras Soriano—Digital Transformation Officer, CEDISA
Jana Duncan—Product Analyst, Zenis
Andrea Fekete—RN
Edwin Fomanka—Lean Process Improvement Engineer, Florida Cancer Specialists & Research Inst.
Stacey Hayes—Senior Immunology Account Executive (Regional/Multispecialty), AbbVie
Siddharth Kelavkar— Certified Operator, The UPS Store
Francis Kouakou—Case Management Coordinator, InCommunity

Uchenna Mogbo—Business Analyst
Oluwagbenga Ogungbemi—Graduate, MSHMI
Robert Oru—Senior Clinical Data Coordinator, Torque Therapeutics
Valerie Payne —Consultant, Deloitte
Denzel Peterson—Human Resource Analyst, Hewlett Packard Enterprise
Joshua Sabiiti—Sr. Associate, Data Scientist, McKesson
Folake Sanni—Graduate, MSHMI
Andrea Taylor—Technical Manager—Identity Manager, Turner Broadcasting System Inc.
Sarah Thompson—Critical Care Registered Nurse, Children's Healthcare of Atlanta
Athena Walker—Quality Assurance Manager, Grady Health System
Nathaniel Ziolk—Data Analyst, Hemophilia of Georgia Center for Bleeding and Clotting Disorders of Emory

MSHMI Cohort 2

Oluwatosin Adedayo—Workforce Technology Development Lead, Boys & Girls Club of Metro Atlanta
Ibidunni Alabi—Scrum Master, Scrum Master Guild
Mabel Amedor—Associate Clinical Data Manager, ClinFocus
Nicole Bershader—Clinical Quality Value Analysis Facilitator, Wellstar Health System
Ronda Broome—Senior Manager, Clinical Abstraction, Synapse
Gracie Carter—Product Manager, HaulHub Technologies
Charles Chakkalapadavil—EMR Training and Support Specialist, Children's Healthcare of Atlanta
Emily Ennis—Senior Business Intelligence Analyst, Cerner Corporation
Teresa Evans—Infection Control Specialist, Floyd Medical Center
Eduardo Garcia—Product Manager, Walmart
Sadia Ghani—Graduate, MSHMI
Christian Haygood—Clinical Research Nurse, Northside Hospital
Melissa Hudson—Reimbursement Analyst, Children's Healthcare of Atlanta
Philip King—Healthcare Informatics Project Manager, GRM Information Management Services

Janae Logan—Data Analyst, Emory Healthcare
Solome Mekbib—Clinic Healthcare Analyst, University of Western States
Anusha Nalla - Professional Informatics Analyst, MVP Health Care
Olakunle Omodara—Construction Electrician, US Navy Reserves
Fortune Onwuzuruike—Security Program Manager 2-WebXT-Microsoft
Suzanne Potter—Clinical Informatics Specialist, Wellstar Health System
Bushra Siddiqi—Data Analyst, Marsh & McLennan Agency
Rachel Sykes—Pre-Operative Registered Nurse, Peachtree Orthopedics
Nolan Taaca—IT Interoperability Application Analyst, Wellstar Health System
Yasmin Lynch—Practice Manager, Southeast Primary Care Partners, LLC
Mikia Thomas—Insurance Operations Associate, PwC
Denise White—Paralegal, Glasser & Schaeffer, PC
Patricia Whitley—Program Director, Health Information Management Technology, Gwinnett Technical College

MSHMI Cohort 1

Vinkle Anand—Senior Associate Consultant, Cerner Corporation
Adeola Bamiro—Data Analyst, Wencor
Christopher Blodgett—Applications Engineer, MR Systems, Inc.
Ivan Cardona—Senior Support Engineer, Synchron
Mahlet Gebrehawariat—Registered Respiratory Therapist, Eastside Medical Center
Shiva Keerthi Giramaji—Graduate, MSHMI
Taugiq Hassan—Data Management Coordinator, Children's Healthcare of Atlanta
Donna Heathcock—Healthcare IT Professional, Wellstar Health System
Dr. Anubhav Karkar—Epic Consultant
Bonnie McDaniel—Senior Financial Planning Analyst, Wellstar Health System
Monalisa Patel—Quality Management Specialist, Emory Healthcare

Andrea Ridings—Clinical Principle Business Analyst Consultant, BlueCross BlueShield of TN
Faisal Saleem—VP of Operations, Children's Medical Group, P.C.
Uchita Shah—Neuroscience Sales Specialist, Biohaven Pharmaceuticals
Dr. Pooja Shah—Medical Payment Specialist, AdvancedMB
Dr. Jiyo Shin—Physician, Wellstar Health System
Dr. Vidya Soundararajan—Obstetrician/Gynecologist, Wellstar Cobb Gynecologists
Brandie Szuda—Chief Data Officer, MagMutual
Sereyroth Than—Forensic Scientist, Quest Diagnostics
Bernis Tibeme—Radiologic Technologist, Children's Healthcare of Atlanta

Testimonials



“ My Healthcare Management and Informatics training has allowed me to advance in my career, moving from a senior nurse in the Cardiac ICU to focus on projects related to patient outcome improvement. I’m now a Clinical Informaticist, and have presented my work at several conferences over the past year ”

SARAH THOMPSON
Clinical Informatics Nurse - Children’s Healthcare of Atlanta



“ Countless times Sweta gave us the chance to interact with executives, whether at conferences or other networking events. This made me feel really comfortable when it was time to do the actual job. I already knew how to answer questions, be knowledgeable, and control the room ”

DR. FORTUNE ONWUZURUIKE
Security Program Manager 2 - WebXT - Microsoft



“ As a medical professional who has seen firsthand how health informatics has been used in the midst of a pandemic, I realize how crucial it is to work closely with informatics to interpret the data collected from a clinical perspective. It is more and more important for clinicians to become involved and assist with data collection in a manner that forwards patient care ”

DR. VIDYA SOUNDARARAJAN
OB/GYN - Wellstar Cobb Gynecologists



“ As a student in Kennesaw State’s Healthcare Management and Informatics Master’s program, I learned the principles and theories to develop practical solutions in a real-world healthcare environment. ”

JOSHUA SABITI
Sr. Associate, Data Scientist - McKesson



“ The opportunity to interact with key individuals in the healthcare industry as well as the MSHMI program curriculum’s blend of healthcare and informatics will aid me in achieving the goals I’ve set for myself. The curriculum can take me far, but what’s more important is that I can transfer my knowledge into the real world ”

VARUN THALLA
Project Manager - Cognizant



“ I had a great experience as a MSHMI student. The interdisciplinary program was challenging, but it provided insights into the different competencies in Healthcare IT – from a leadership and governance to informatics and analytics. The program helped me to become a more well-rounded leader ”

RONDA BROOME
Associate Director - Synapse



“ Familiarity with Healthcare IT systems helps you develop effective solutions. Since graduating from the MSHMI program, I have successfully implemented solutions for every area of the business where I work, from Human Resources to billing and payroll solutions ”

FAISAL SALEEM
Chief Operating Officer - Children’s Medical Group



“ Since graduating from the MSHMI program, I have provided consultation on both the clinical and technical spectrum. The ability to ‘speak the language’ of both the clinical and technical side of healthcare has been key to my career advancement, as well as having access to work on some interesting Data Analytics projects ”

ANDREA RIDINGS
Quality Data Steward - BlueCross BlueShield of Tennessee

Discover More About the MSHMI Program



**KENNESAW STATE
UNIVERSITY**

COLES COLLEGE OF BUSINESS
*Master of Science in Healthcare
Management and Informatics*