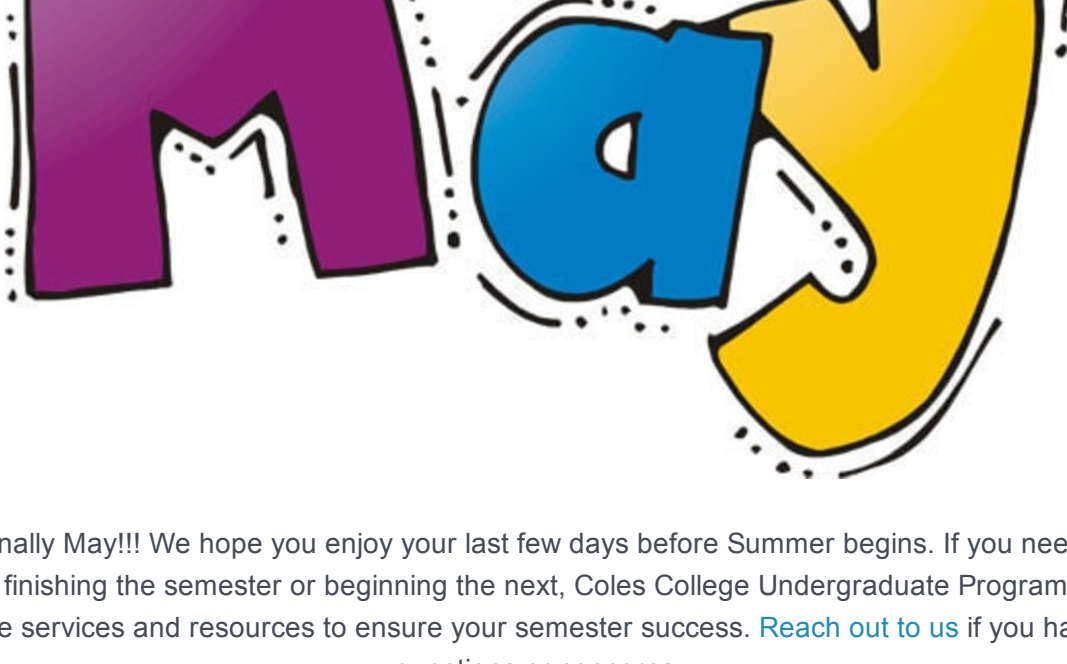


# CONNECT for SUCCESS



It's finally May!!! We hope you enjoy your last few days before Summer begins. If you need any help finishing the semester or beginning the next, Coles College Undergraduate Programs can provide services and resources to ensure your semester success. [Reach out to us](#) if you have any questions or concerns.

We're here to help!

[Colescollegeowls@kennesaw.edu](mailto:Colescollegeowls@kennesaw.edu)

## Barriers Survey

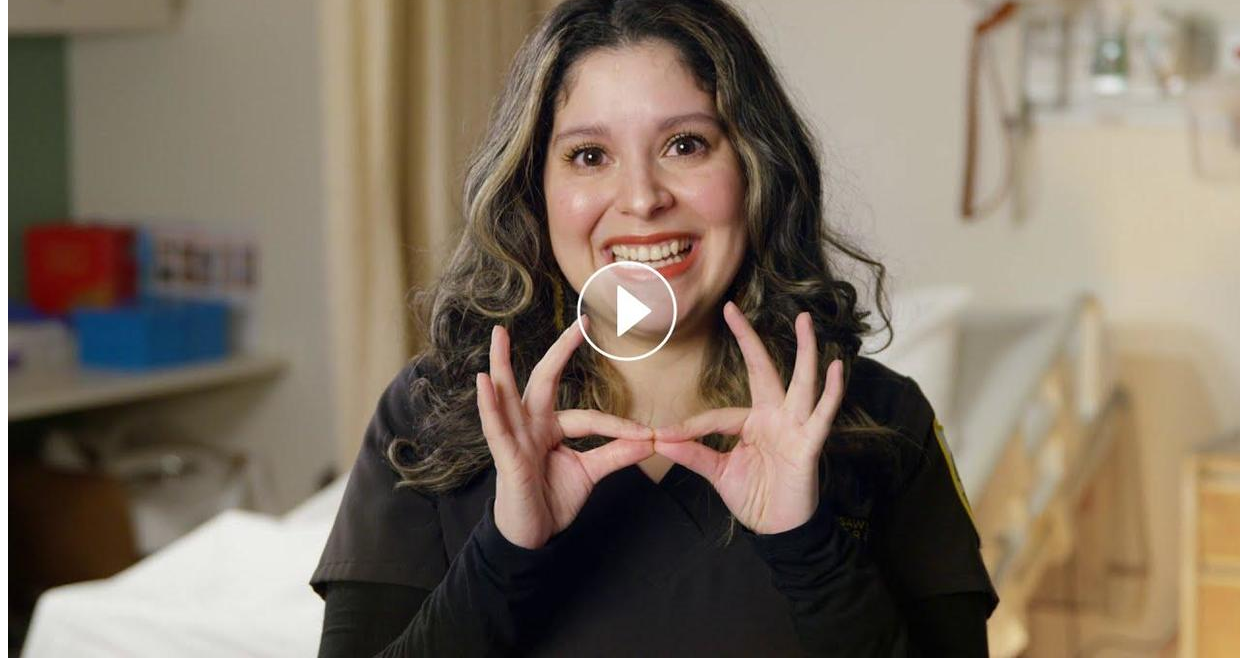
We want to get a sense of how things have been going with you, especially during this Covid-19 pandemic. We want to make sure we are meeting your needs as much as possible. Take a few minutes to fill out this quick 'temperature check' survey.

We are here for you!

[Take Our Survey](#)

## Protect The Nest

### Student Testimonies



## BUSA/Flight Academy Feedback Survey

Hello, BUSA students! Participate in this survey to share your experience with your BUSA course and the Flight Academy this semester.

[BUSA 2150 Feedback Survey](#)

[BUSA 3150 Feedback Survey](#)

[BUSA 4150 Feedback Survey](#)



### Office of Diversity & Inclusion

Kennesaw State University has now begun Phase II of the Presidential Task Force on Race: Accountability and Implementation. During this phase committee members are tasked with establishing actionable steps, identifying campus partners with the requisite content expertise to support, guide, and implement recommendations related to the Curriculum, Faculty, Staff, and Students.

For more information about this task force and office, visit [here](#).



### Kennesaw Activities Board

Kennesaw Activities Board, better known to the public as KAB, is one of the programming boards at Kennesaw State University! They are responsible for turning your student FEES into FUN through concerts, festivals, food, and more -- all for you!! They are all about presenting a diverse and varied programming calendar that meets the social, recreational, cultural, and intellectual requests of the KSU student body.

For more information about KAB, visit [here](#).



## MEBUS Program

The [Music & Entertainment Business Program](#) is a 24-credit certificate program offering three capstone courses in music & entertainment business as well as marketing, management, production, communication, and entrepreneurship courses that prepare students for successful careers in the entertainment industry. MEBUS is open to all KSU undergraduate majors with a desire to work in the entertainment industry in areas such as film and television production, audio and video technology, venue and artist management, and concert and event production.

We are currently accepting applications for the upcoming fall semester from all majors.

[Download](#) and fill out the application today!

Watch this [video](#) for more information.



### Career & Internship Advising

Got a quick question for a career advisor? Join our drop-in virtual career advising sessions to get answers to your questions on:

- Resumes
- Upcoming Job Fairs
- Internships & Co-ops
- Networking
- Interviewing

This is a great way to quickly meet (10-15 minutes max.) with a career advisor without scheduling an appointment.

Join us most Thursdays on [Microsoft Teams](#) from 11:00 AM to 1:00 PM!



### Virtual Reception Desk

The Coles College Advising Center's reception desk is also open virtually. Hop on a Microsoft Teams call to ask our student assistants general advising questions.

Hours of Operation:

- Monday: 9am - 5pm
- Tuesday: 9am - 5pm
- Wednesday: 9am - 5pm
- Thursday: 9am - 5pm
- Friday: 9am - 5pm

Visit our [website](#) for more information and the link to the virtual reception desk!

## Top 3 Major Maximizing Activities/Experiences

Undergraduate Programs has put together a survey to identify the top 3 activities our majors can engage in to be more successful in college and after. Your responses will be used to develop content for a major-specific direct mail awareness campaign; it may be useful in other ways as well.

[Share With Us](#)



## Online Learning Support

Kennesaw State University has several resources and tools to help you be successful online throughout the semester. Whether it is the first day, the first week, or every day of the semester.

Take advantage of [online learning support](#) today!

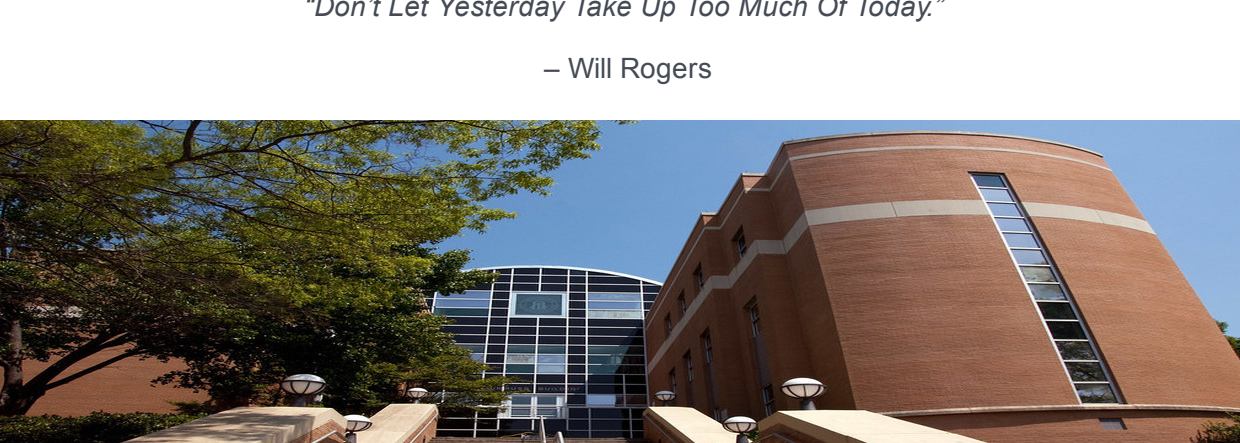
## How Many Differences Can You Spot?

Here's the [link](#) with answers.

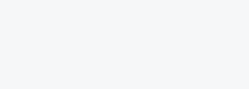


*"Don't Let Yesterday Take Up Too Much Of Today."*

– Will Rogers



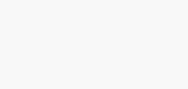
Share this email:



[Manage](#) your preferences | [Opt out](#) using TrueRemove™  
Got this as a forward? [Sign up](#) to receive our future emails.  
View this email [online](#).

560 Parliament Garden Way NW, Kennesaw, GA 30144  
Kennesaw, GA | 30080 US

This email was sent to .  
To continue receiving our emails, add us to your address book.



[Subscribe](#) to our email list.