



KENNESAW STATE
UNIVERSITY
UNIVERSITY INFORMATION
TECHNOLOGY SERVICES

SoftChalk Cloud
D2L Brightspace

Copyright © 2020 KSU Division of University Information Technology Services

This document may be downloaded, printed, or copied for educational use without further permission of the University Information Technology Services Division (UITS), provided the content is not modified and this statement is not removed. Any use not stated above requires the written consent of the UITS Division. The distribution of a copy of this document via the Internet or other electronic medium without the written permission of the KSU - UITS Division is expressly prohibited.

Published by Kennesaw State University – UITS 2020

The publisher makes no warranties as to the accuracy of the material contained in this document and therefore is not responsible for any damages or liabilities incurred from UITS use.

University Information Technology Services

SoftChalk Cloud

D2L Brightspace

Table of Contents

Introduction	4
Learning Objectives.....	4
Saving to SoftChalk Cloud	5
Linking Your SoftChalk Cloud Lesson to D2L Brightspace.....	6
Hyperlink the SoftChalk Cloud Lesson	6
Viewing Your SoftChalk Cloud Lesson.....	9
Linking Your SoftChalk Cloud Lesson ScoreCenter to D2L Brightspace	10
LTI Link the SoftChalk Cloud Lesson.....	10
View and Configure a SoftChalk Cloud Lesson	13
View Scores from the SoftChalk Cloud LTI Link Lessons in D2L Brightspace	14
Editing Your SoftChalk Lesson.....	15
Editing Your Lesson in SoftChalk Create	15
Editing Your Lesson from the SoftChalkCloud.com Website.....	18
Additional Help	21

Introduction

SoftChalk Cloud is a web application that lets you create lessons to publish online. Lessons can include text, multimedia, self-check quizzes, and more. Your lessons can include multiple linked pages and a table of contents, and you can style your lessons for a professional look. Kennesaw State University also has licenses for the SoftChalk Cloud, which allows you to easily make changes to your existing lessons.

This document was created with SoftChalk Create 11, available at <https://uits.kennesaw.edu/downloads/>.

The booklet demonstrates how to incorporate SoftChalk into your D2L Brightspace course.

Learning Objectives

After completing the instructions in this booklet, you will be able to:

- Save lessons to SoftChalk Cloud
- Link your SoftChalk Cloud lesson to D2L Brightspace
- Link your SoftChalk Chalk Cloud lesson ScoreCenter to D2L Brightspace
- Edit your SoftChalk Lesson

Saving to SoftChalk Cloud

1. In *SoftChalk Create*, click **File** (See Figure 1).
2. Click **Save To SoftChalk Cloud** (See Figure 1).

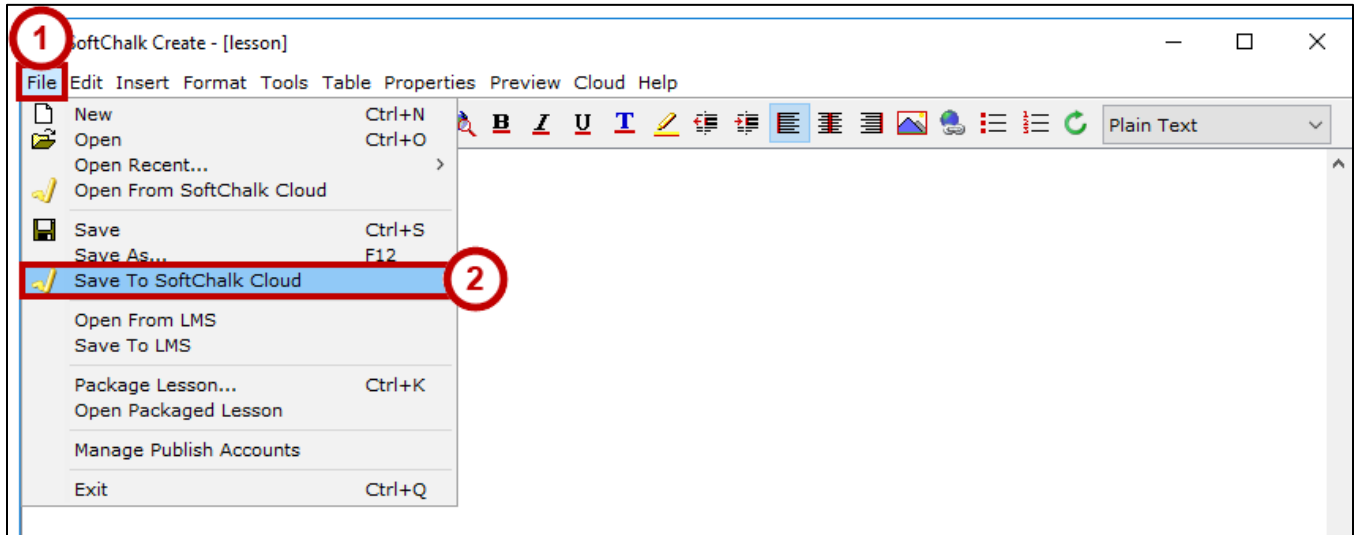


Figure 1 - Save to SoftChalk Cloud

3. The *Save to Cloud* dialog box will open (See Figure 2).
4. Browse to the desired **location** (See Figure 2).
5. Enter an appropriate **File Name** (See Figure 2).

Note: For a lesson name, you can use only letters, numbers, dashes and underscores. You cannot use spaces, apostrophes or any characters that are not letters, numbers, dashes or underscores.

6. Choose **Personal** as your *Privacy* setting (See Figure 2).
7. Click **Save** (See Figure 2).

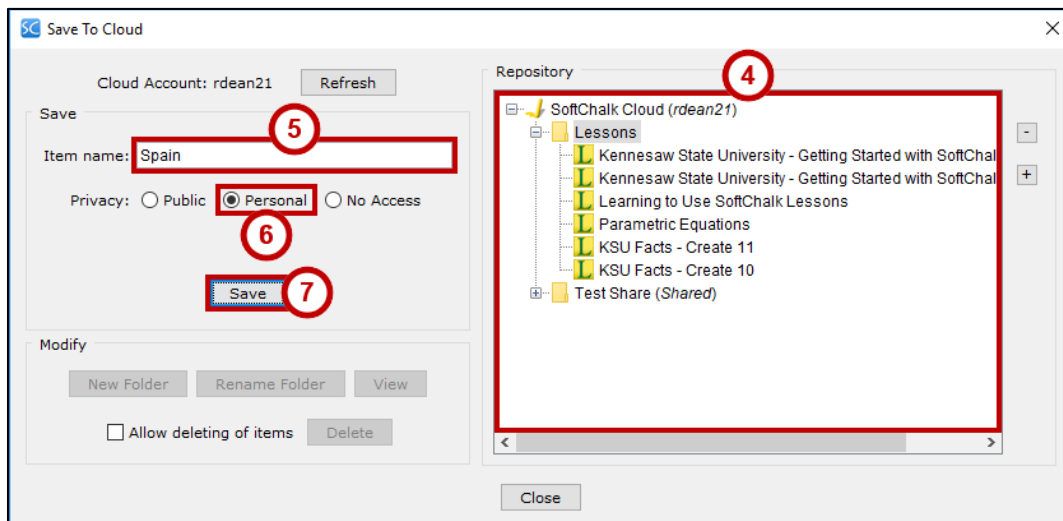


Figure 2 - Save to Cloud

8. The *Your lesson has been saved to SoftChalk Cloud* dialog box will open. Click **OK**.

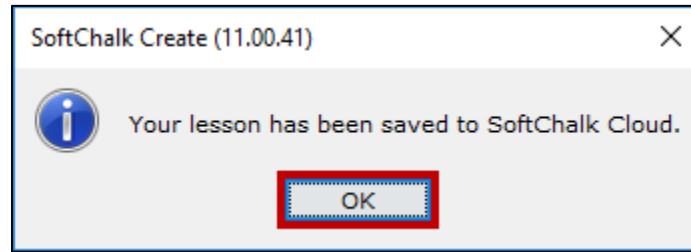


Figure 3 - Your Lesson has been saved to SoftChalk Cloud

Linking Your SoftChalk Cloud Lesson to D2L Brightspace

You can publish your lesson to D2L Brightspace using the SoftChalk Cloud. This will link your SoftChalk Cloud lesson content within your D2L Brightspace course.

Note: Linking the SoftChalk Cloud lesson URL will not connect the ScoreCenter to D2L Brightspace. See [Linking Your SoftChalk Cloud Lesson ScoreCenter to D2L Brightspace](#).

Hyperlink the SoftChalk Cloud Lesson

1. Choose your course from the *My Courses* area.
2. Click **Content** from the course navbar.
3. Under the appropriate module, click the grey **Existing Activities** button (See Figure 4).
4. From the *Existing Activities* drop-down menu, click **SoftChalk Link Selector** (See Figure 4).

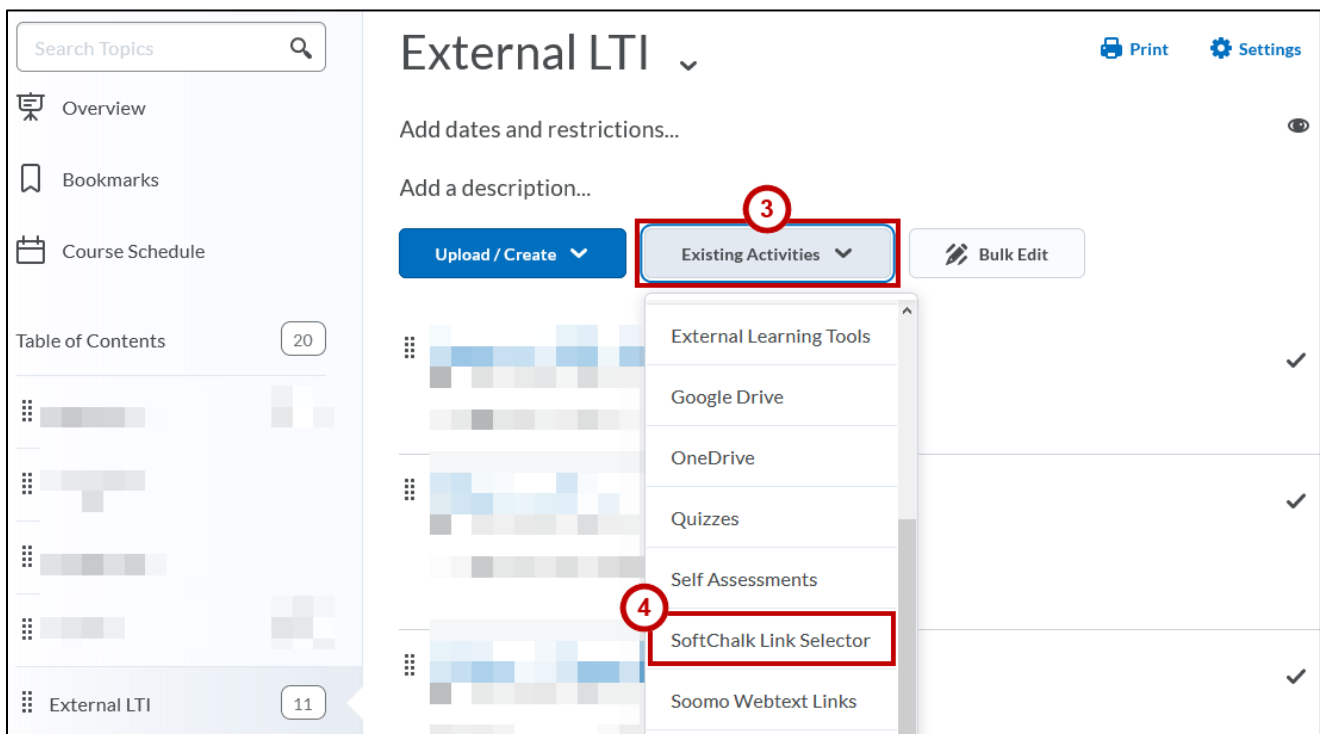


Figure 4 - SoftChalk Link Selector

5. In the *Add Activity* window, type your **SoftChalk Cloud account** credentials (See Figure 5).
6. Click **Login** (See Figure 5).

Note: If you do not have a SoftChalk Cloud account, please submit a request to the KSU Service Desk via phone (470-578-6999) or email (service@kennesaw.edu).

Figure 5 - SoftChalk Cloud Account Login

7. Select a **Lesson** (See Figure 6).
8. Select **Hyperlink** (See Figure 6).
9. Click the **Select** button (See Figure 6).

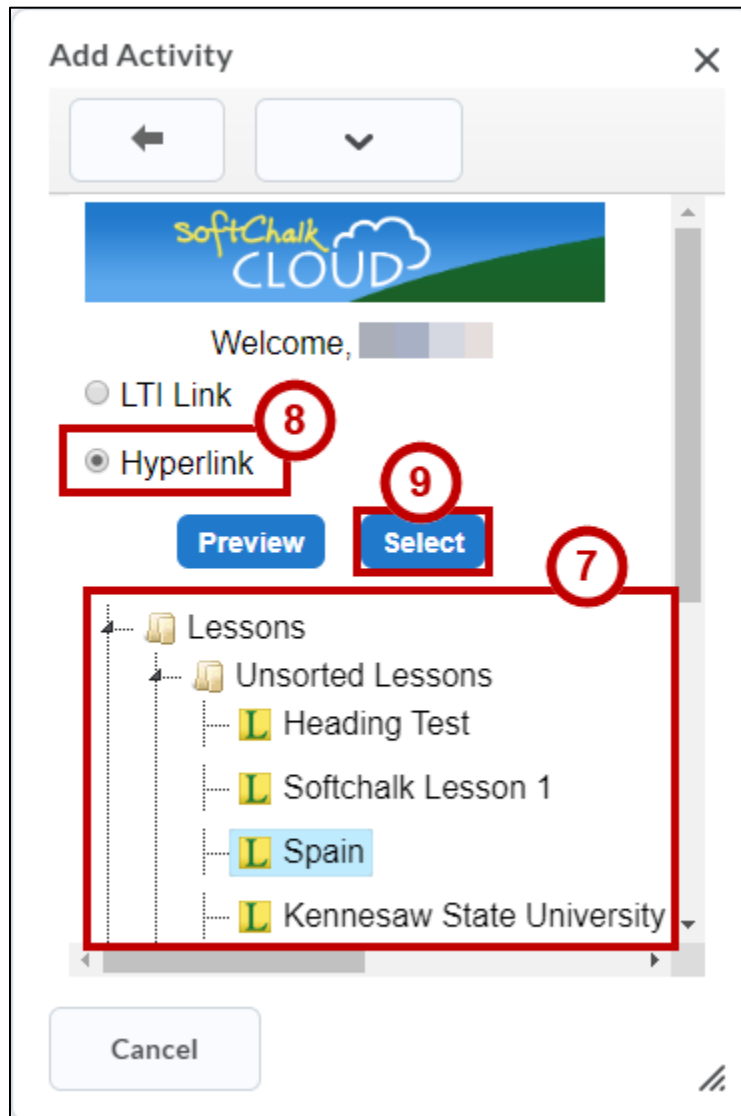


Figure 6 - Hyperlink

Viewing Your SoftChalk Cloud Lesson

To verify that your lesson is available, follow the steps below:

1. Click the **Course Home** menu item.
2. Click the **Module** (folder) that contains your SoftChalk lesson.
3. Click the **link** to your SoftChalk Cloud lesson (See Figure 7).

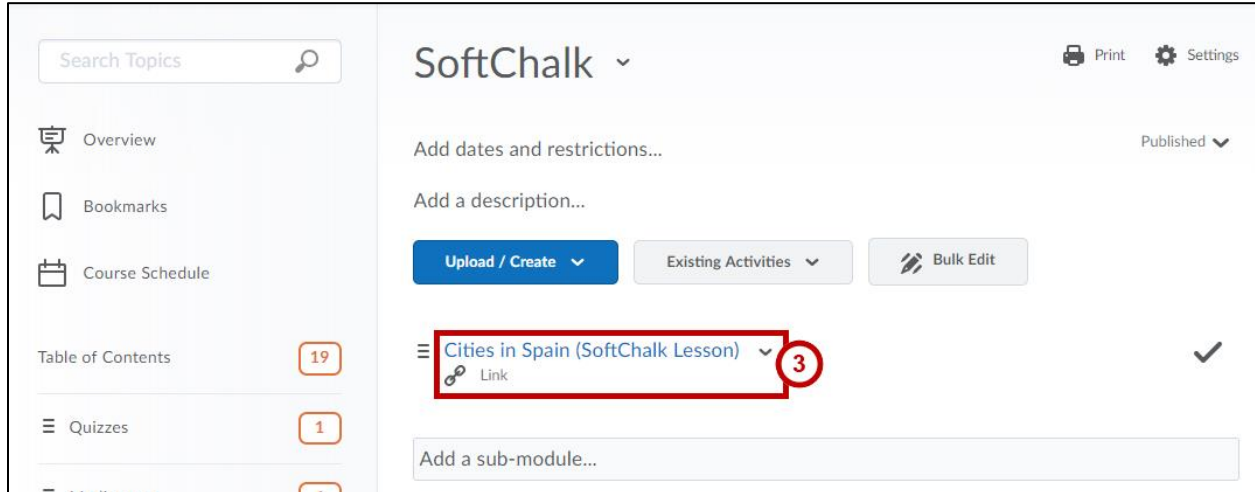


Figure 7 - Link to SoftChalk Lesson

4. The lesson will be displayed in your browser.

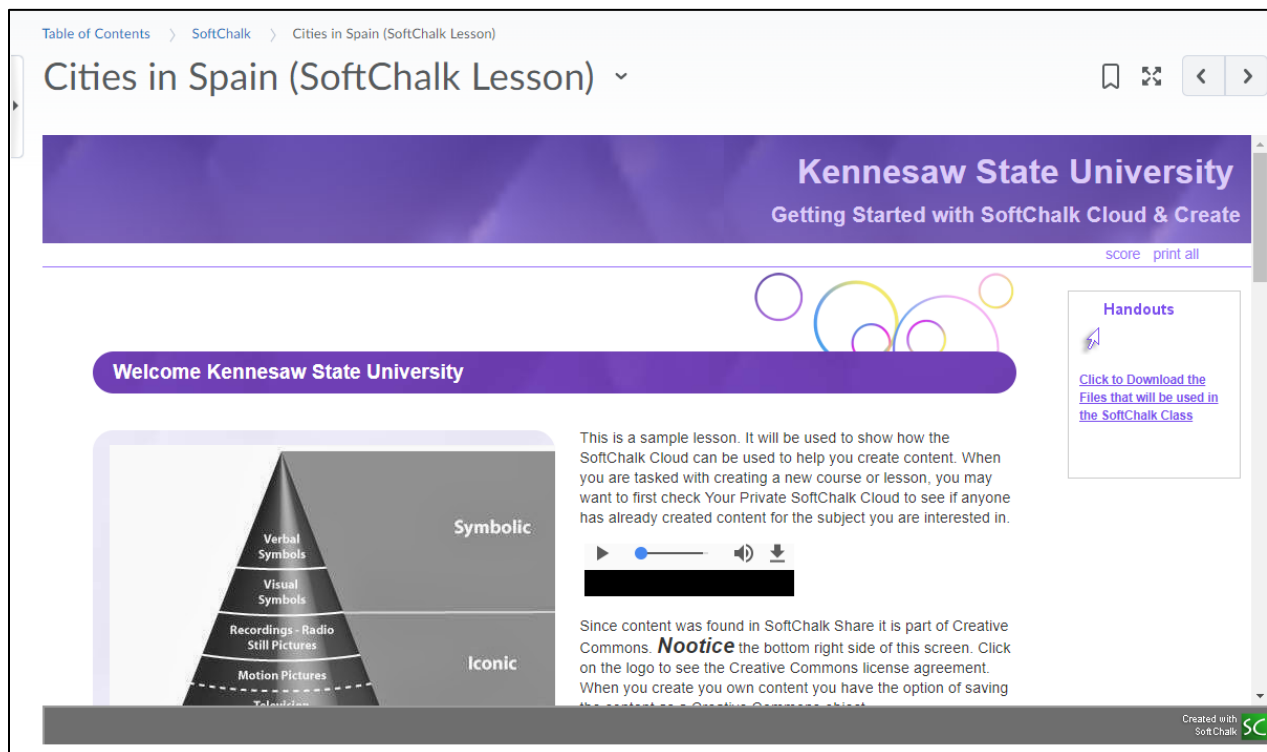


Figure 8 - SoftChalk Lesson Displayed in a Course

Linking Your SoftChalk Cloud Lesson ScoreCenter to D2L Brightspace

SoftChalk lesson scores within the D2L Brightspace gradebook, you are using a SoftChalk feature called the ScoreCenter. You can access by clicking on the name for your lesson in the assignments area of D2L Brightspace and you will see the ScoreCenter interface. All the scores within the ScoreCenter are also added the D2L Brightspace gradebook.

Note: While ScoreCenter integration is possible, please be aware that this solution is not intended to replace the Quizzes function in D2L Brightspace.

Note: The recommended use of SoftChalk quizzes and ScoreCenter grades items is for self-assessment purposes only.

LTI Link the SoftChalk Cloud Lesson

1. Choose your course from the *My Courses* area.
2. Click **Content** from the course navbar.
3. Under the appropriate module, click the grey **Existing Activities** button (See Figure 9).
4. From the *Existing Activities* drop-down menu, click **SoftChalk Link Selector** (See Figure 9).

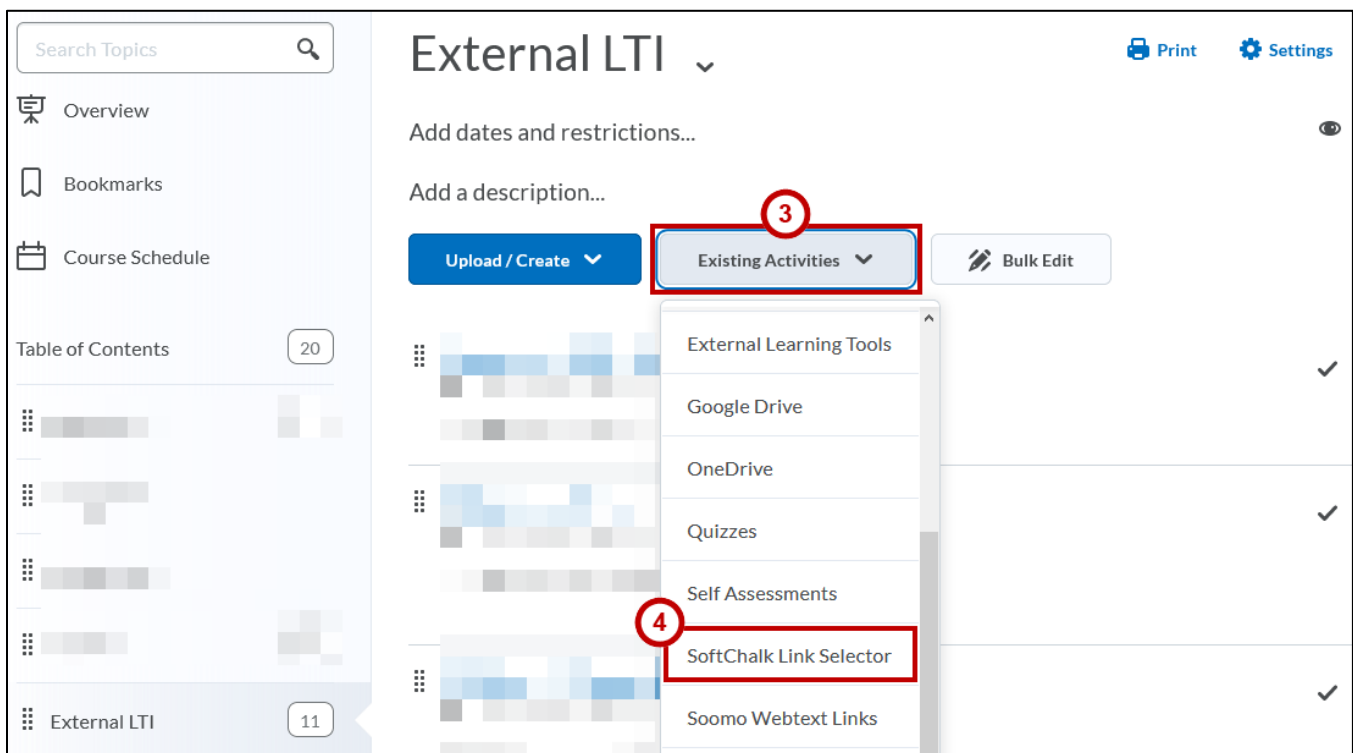


Figure 9 - Create a Link

5. In the *Add Activity* window, type your **SoftChalk Cloud account** credentials (See Figure 10).
6. Click **Login** (See Figure 10).

Note: If you do not have a SoftChalk Cloud account, please submit a request to the KSU Service Desk via phone (470-578-6999) or email (service@kennesaw.edu).

Join Now page. If you have lost your password, then you can [request your password](#) to have it e-mailed to you.' There are two input fields: 'Username or email address' and 'Password'. A red box highlights both input fields, with a red circle containing the number '5' next to it. Below the input fields is a green 'Login' button with a red circle containing the number '6' next to it. At the bottom left is a 'Cancel' button. At the bottom right is a small icon of three diagonal lines."/>

Figure 10 - SoftChalk Cloud Account Login

7. Select a **Lesson** (See Figure 11).
8. Select **LTI Link** (See Figure 11).
9. Click the **Select** button (See Figure 11).

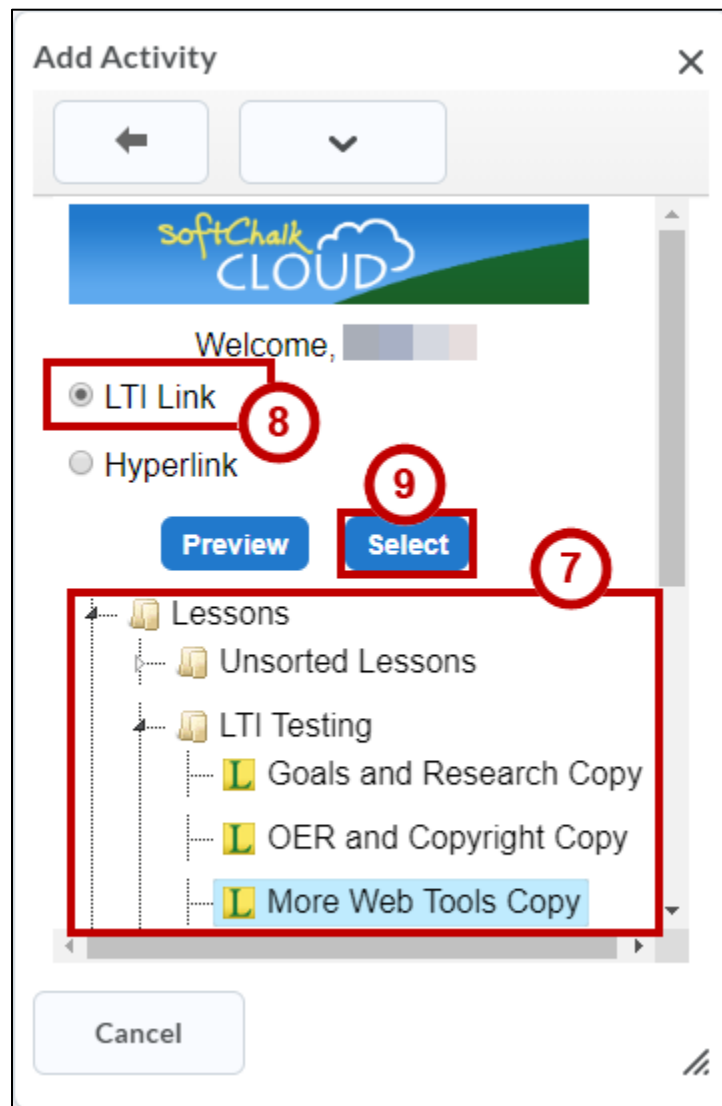


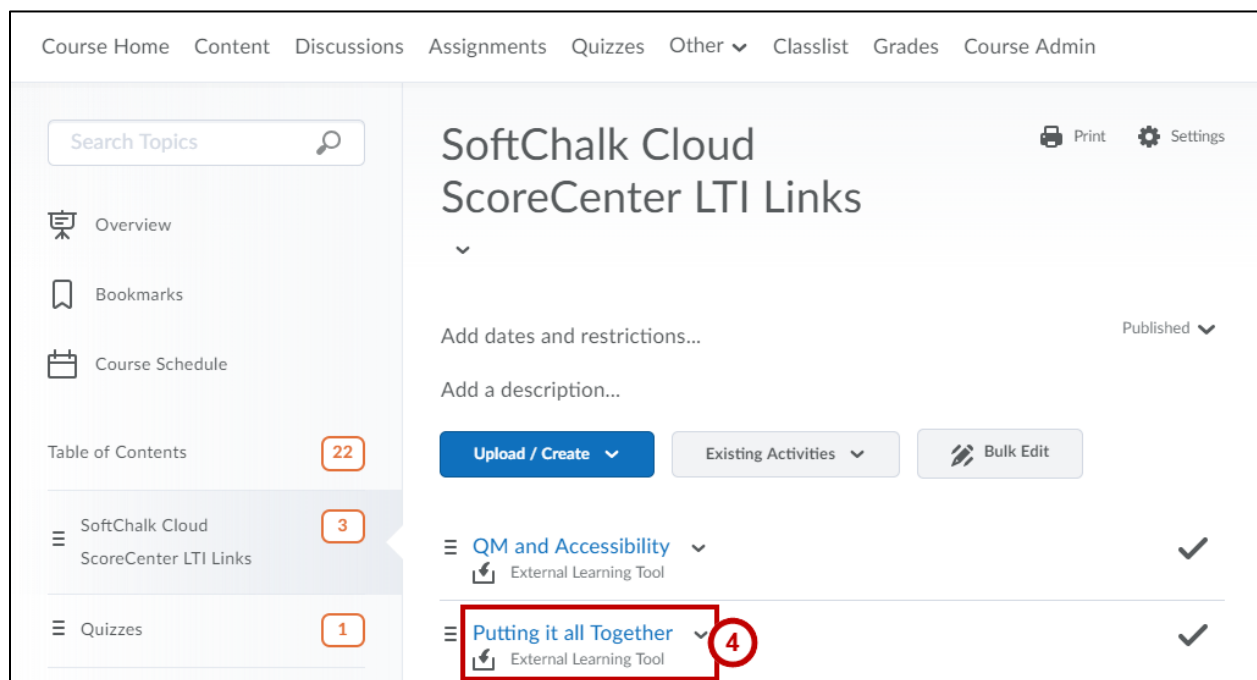
Figure 11 - LTI Link

View and Configure a SoftChalk Cloud Lesson

You will need to set the grading method and the maximum attempts allowed. All student attempts will be collected, and you can view all the attempts for each student for each lesson. You can change the grading method and maximum attempts at any point. If you want to allow your students only one attempt for the lesson, you need to set that option right away.

Note: Be sure to log out of your SoftChalk Cloud account when you are taking your lesson as a student to test out the ScoreCenter feature. If you are logged into your SoftChalk Cloud account while logged into D2L Brightspace and taking a lesson, then the scores won't be recorded.

1. Log into D2L Brightspace in your web browser.
2. Choose your course from the *My Courses* area.
3. Click **Content** from the navbar.
4. Click the **link** to your SoftChalk Cloud lesson (See Figure 12).



The screenshot displays the D2L Brightspace interface for a course. The top navigation bar includes links for Course Home, Content, Discussions, Assignments, Quizzes, Other, Classlist, Grades, and Course Admin. The main content area is titled 'SoftChalk Cloud ScoreCenter LTI Links'. On the left, a sidebar shows a 'Table of Contents' with 'SoftChalk Cloud ScoreCenter LTI Links' highlighted. The main content area shows a list of LTI links, with 'Putting it all Together' selected and circled in red. The number '4' is also circled in red next to the selected link.

Figure 12 - Link to SoftChalk Lesson

5. In the *SoftChalk Cloud ScoreCenter* for the lesson, you can do the following:
 - a. **View Lesson** - Preview the lesson (See Figure 13).
 - b. **Actions** - Click the **Actions** button to change scoring method, change maximum attempts, and complete all attempts (See Figure 13).
 - i. **Change Scoring Method** - Change the way the grades are calculated (See Figure 13).
 - ii. **Change Maximum Attempts** - Changes how many times a learner is allowed to attempt the content (See Figure 13).
 - iii. **Complete All Attempts** - Completing all attempts will mark every attempt for all learners as Complete and allow for the editing of grades. A completed attempt will also be part of the grade calculation (for instance, if you choose the average of all the grades). (See Figure 13).
 - c. **Learners** - View learner attempt(s) and detailed information on the attempt(s) (See Figure 13).

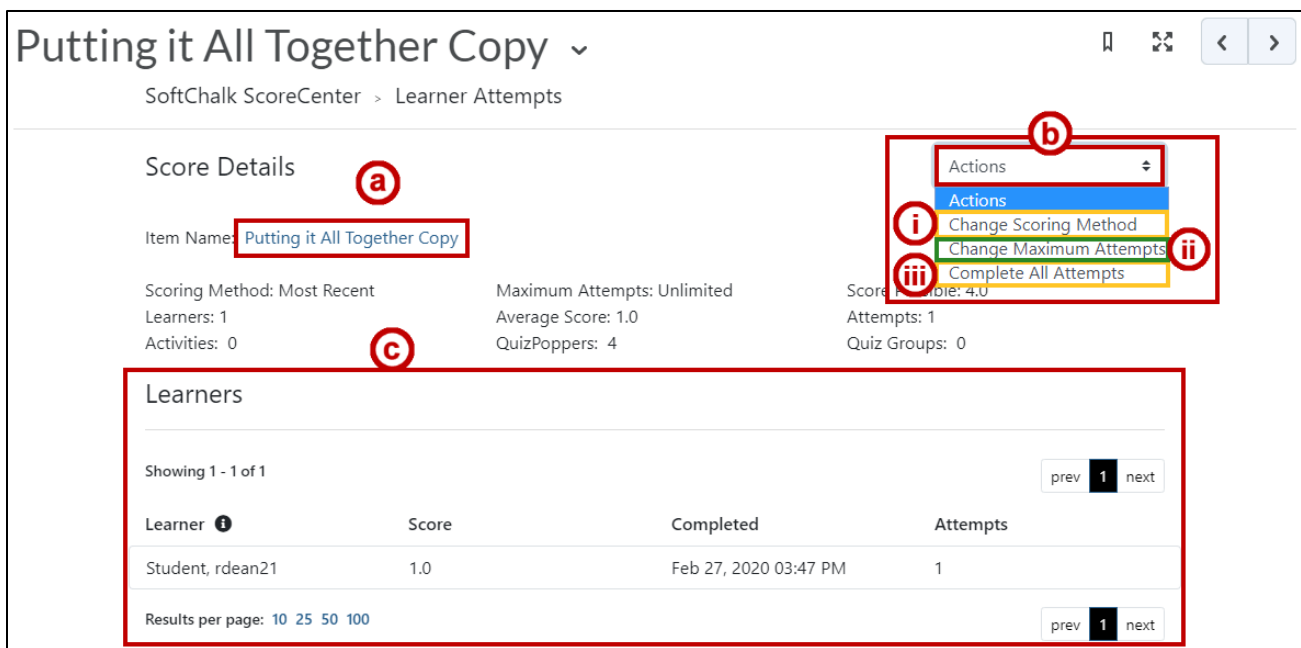


Figure 13 - SoftChalk Lesson Displayed in a Course

View Scores from the SoftChalk Cloud LTI Link Lessons in D2L Brightspace

To access SoftChalk Cloud LTI Link Lesson scores in D2L Brightspace, follow the steps below.

Note: The Grade item is automatically created with the first student submission.

1. From within your course, click **Grades** on the Course Navbar.



Figure 14 - Grades

2. Click **Enter Grades** (See Figure 15).
3. The student scores will be displayed (See Figure 15).

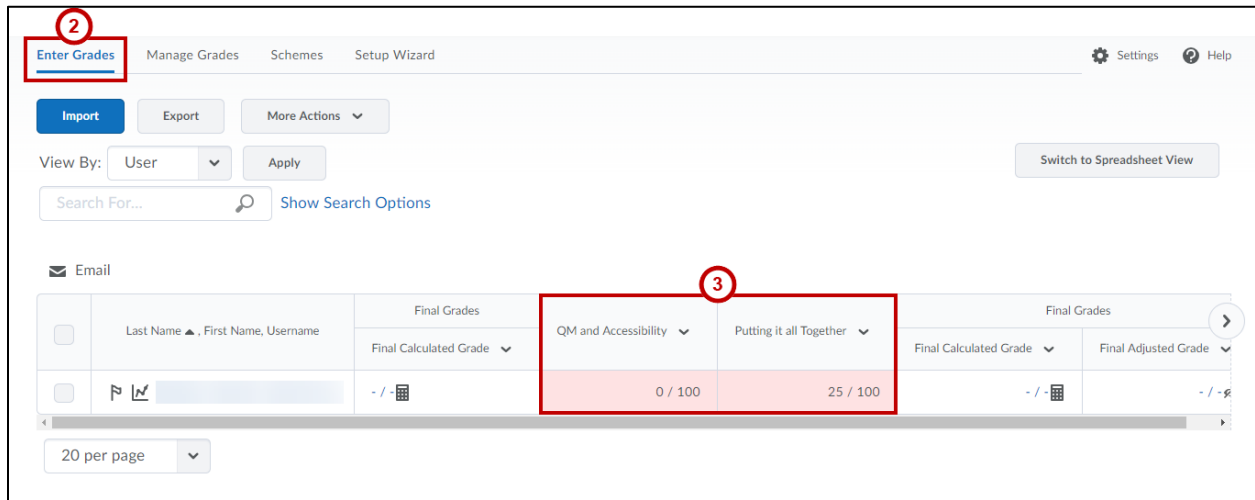


Figure 15 - Enter Grades

Editing Your SoftChalk Lesson

Since the SoftChalk Cloud allows you to simply link a lesson into D2L, you can easily edit your lessons at any time. The update is immediately available to your students.

Editing Your Lesson in SoftChalk Create

On your own computer, you can edit your SoftChalk lesson in your locally installed SoftChalk Create software.

1. Open **SoftChalk Create**.
2. Click **File** in the SoftChalk Create menu bar (See Figure 16).
3. Click **Open from SoftChalk Cloud** (See Figure 16).

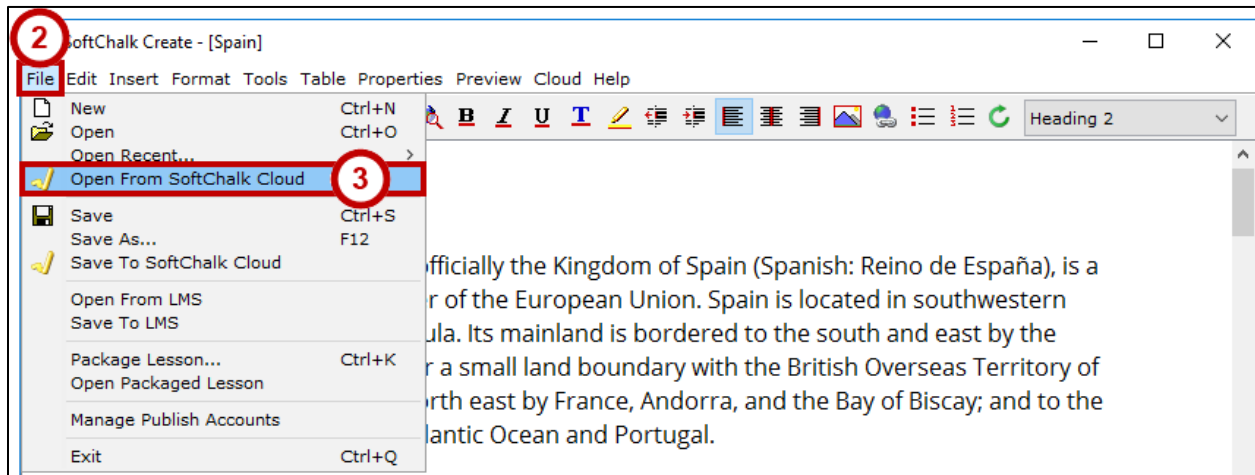


Figure 16 - Open from SoftChalk Cloud

4. Browse to your lesson in your SoftChalk Cloud lessons area and **select it** (See Figure 17).
5. Click the **Open** button (See Figure 17).

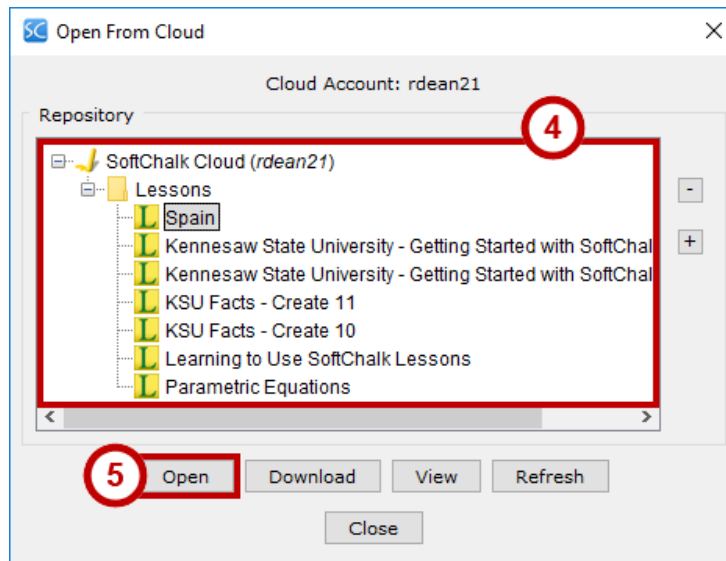


Figure 17 - Open Lesson from SoftChalk Cloud

6. Make changes to your lesson as needed.
7. After you are done editing, click **File** in the *SoftChalk Create* menu bar (See Figure 18).
8. Click **Save to SoftChalk Cloud** (See Figure 18).

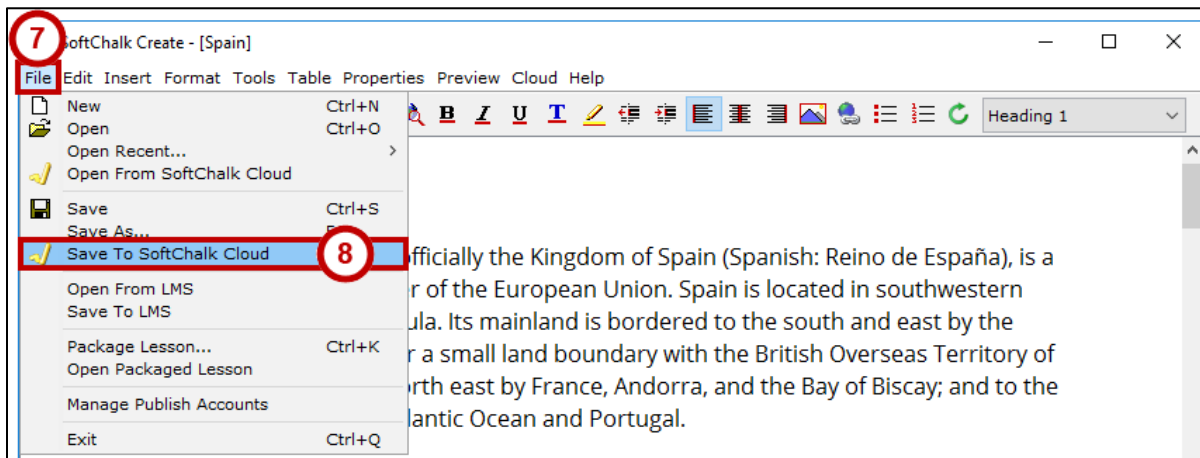


Figure 18 - Save to SoftChalk Cloud

9. The *Save to Cloud* window opens. Click the **Save** button.

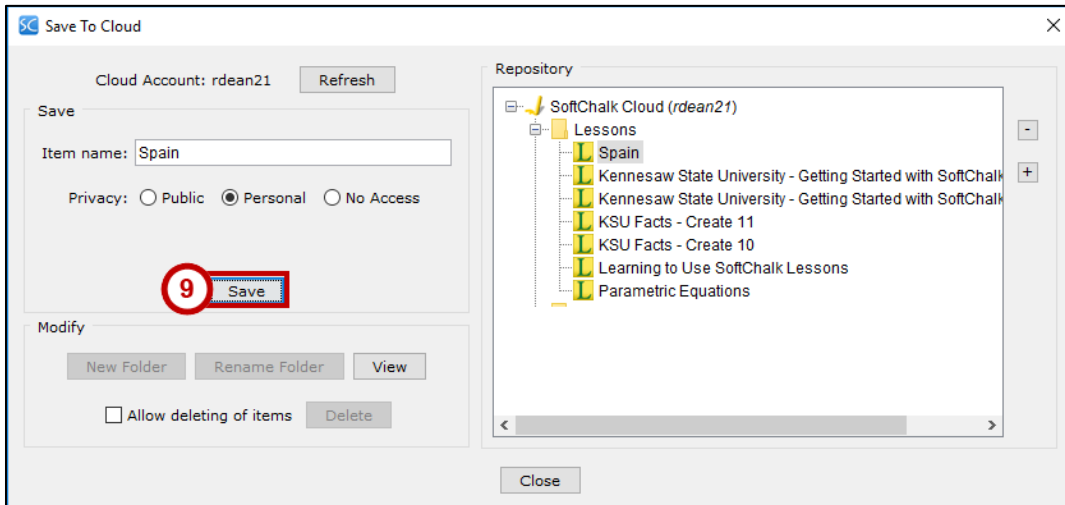


Figure 19 - Save To Cloud

10. In the *Replace Item* dialog box, click the **OK** button.

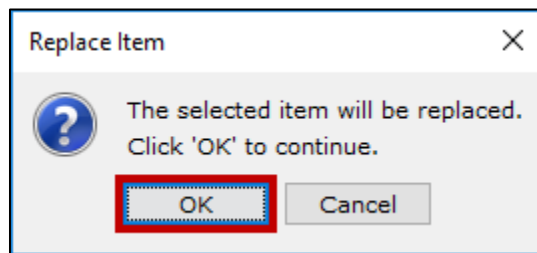


Figure 20 - Replace Item

11. After saving, you will receive a confirmation that *Your lesson has been saved to SoftChalk Cloud*. Click the **OK** button.

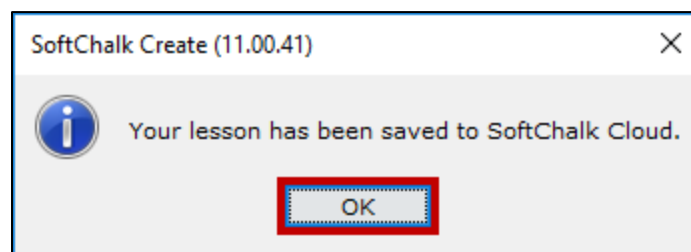


Figure 21 - Your lesson has been saved to SoftChalk Cloud

12. After your lesson uploads to the SoftChalk Cloud, click the **Close** button.

Note: Choosing *Open from SoftChalk Cloud* instead of just *Open* or *Open Recent* is a recommended best practice; ensuring that you are editing the most recent version of your lesson. It also ensures that you save the updated lesson to the same spot in the Cloud, making your update instantly available to your students without any further action from you.

Editing Your Lesson from the SoftChalkCloud.com Website

If you are using a computer that does not have SoftChalk Create already installed, you can edit a SoftChalk Cloud lesson from the web browser. This example uses the Mozilla Firefox browser.

1. In your browser, go to the website <http://www.softchalkcloud.com>.
2. Click the **Login** link at the top right (See Figure 22).
3. Type your **email address** (See Figure 22).
4. Type your **password** (See Figure 22).
5. Click the **Login** button (See Figure 22).

Note: If you do not have a SoftChalk Cloud account, please submit a request to the KSU Service Desk via phone (470-578-6999) or email (service@kennesaw.edu).

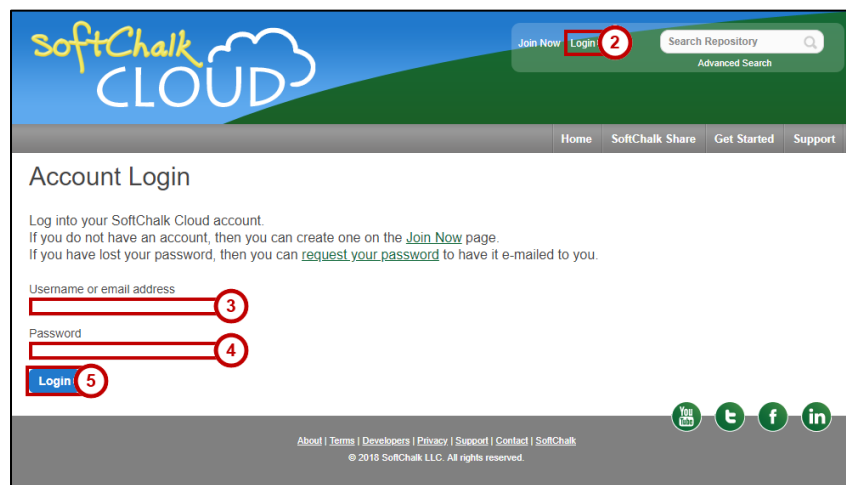


Figure 22 - Accessing SoftChalk Cloud

6. In the menu bar, hover over **My Content** (See Figure 23).
7. Click **Lessons** from the menu that appears below (See Figure 23).



Figure 23 - Accessing Lessons

8. The lessons you have published to the Cloud appear.
9. Click the **name** of the lesson you wish to edit.
10. A preview of your lesson appears.
11. **Scroll down** below the lesson.
12. Click **Edit Lesson** (See Figure 24).
13. Click **Edit in Create** (See Figure 24).

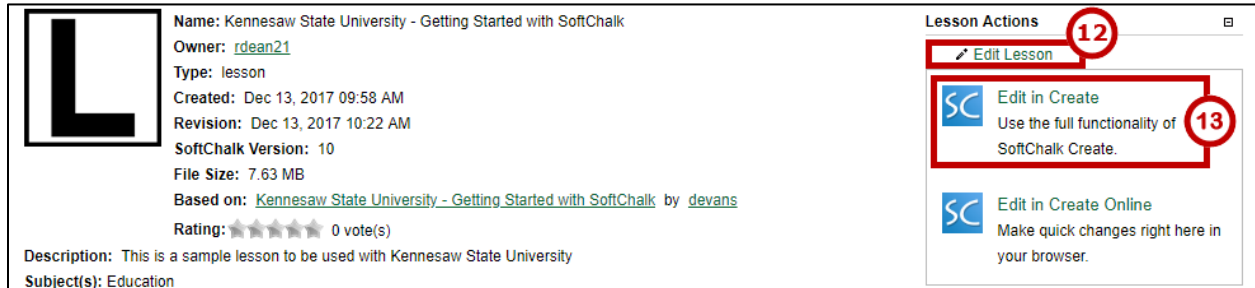


Figure 24 - Editing in Create

Note: You may be prompted to install SoftChalk Create. If so, follow the prompts to complete the installation process. Once the installation is complete, you will see a new SoftChalk Create shortcut on your desktop. This version of SoftChalk Create is the Cloud version. You may access SoftChalk Create using either of the shortcuts on your desktop.

14. Your browser will prompt you to open a link with the *Java Web Start Launcher*. Click the **Open Link** button (See Figure 25).

Note: The message below appears in Firefox. Each browser will have a different message.

Note: If this is the first time you have edited a lesson from the SoftChalk Cloud on this computer, there is a delay of several minutes while the SoftChalk Create web-launch software is installed.

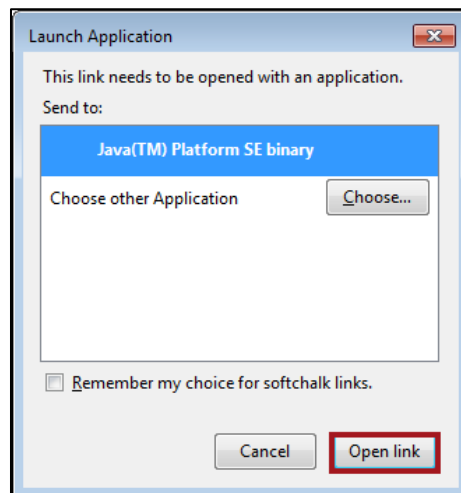


Figure 25 - Firefox Java Web Start Launcher

15. SoftChalk Create launches and your lesson is downloaded from the SoftChalk Cloud.
16. Make changes to your lesson as needed.
17. After you are done editing, click **File** in the *SoftChalk Create* menu bar (See Figure 26).
18. Click **Save to SoftChalk Cloud** (See Figure 26).

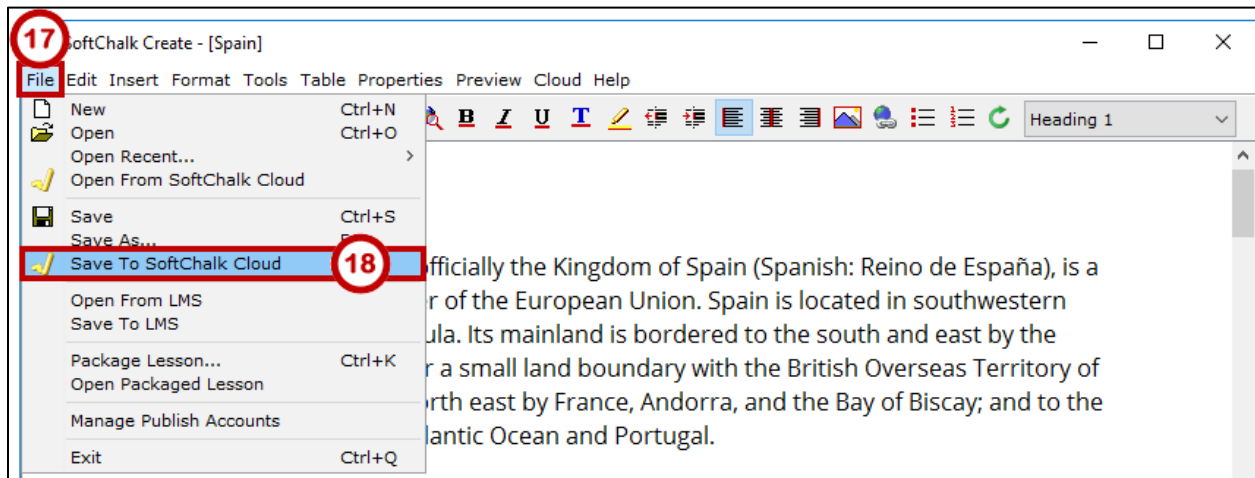


Figure 26 - Save to SoftChalk Cloud

19. Click the **Save** button.

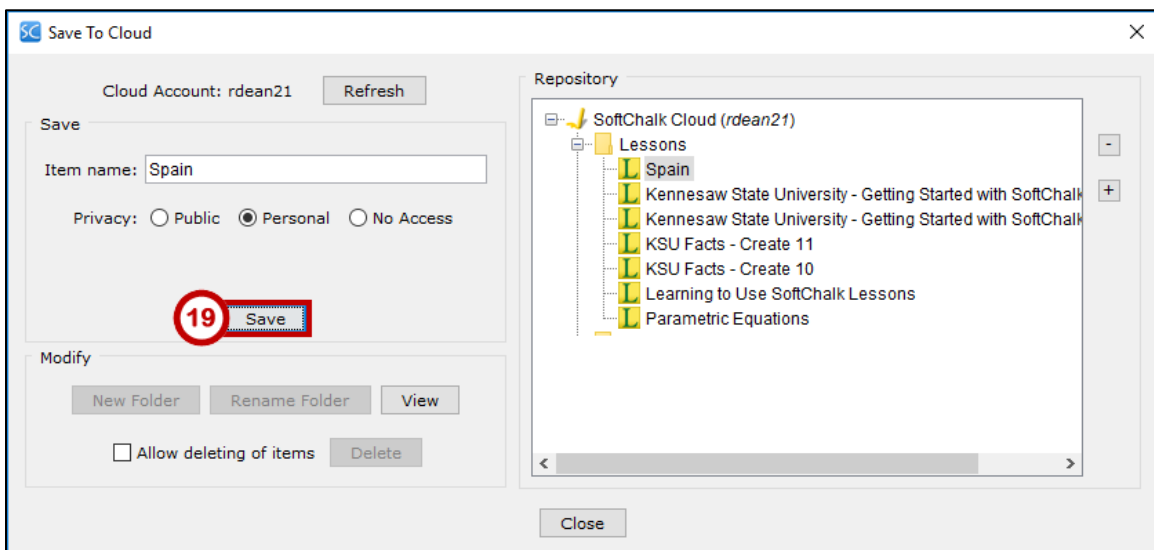


Figure 27 - Save To Cloud

20. In the *Replace Item* dialog box, click the **OK** button.

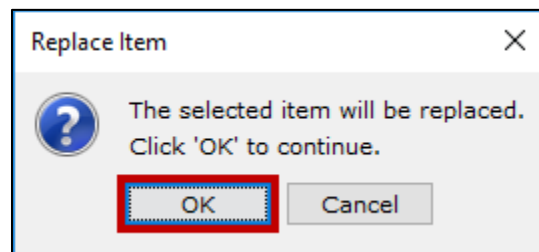


Figure 28 - Replace Item

21. After saving you will receive a confirmation “*Your lesson has been saved to SoftChalk Cloud*”. Click the **OK** button.

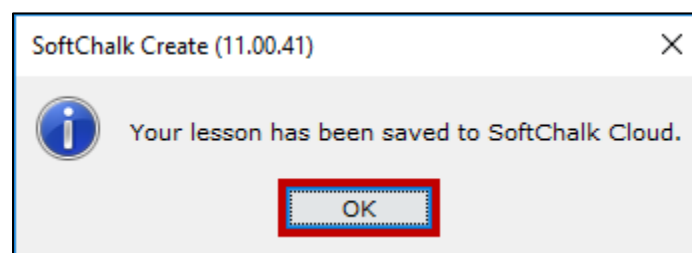


Figure 29 - Your lesson has been saved to SoftChalk Cloud

22. After your lesson uploads to the SoftChalk Cloud, click the **Close** button.

Additional Help

For additional support, please contact the KSU Service Desk:

KSU Service Desk for Faculty & Staff

- Phone: 470-578-6999
- Email: service@kennesaw.edu
- Website: <http://uits.kennesaw.edu>