

Annual **REPORT** 2024-2025



Contents

Letter from the Dean

4

Mission Statement

5

By the Numbers

6

Enrollment Trends

7

Student Story: El Arbi Belfarsi

8

New Program

11

Graduate Student Demographics

12

Research Spotlight

13

Graduate Student Highlights

14

Student Story: Yi Gu

16

Graduate Student
Appreciation Week

18

Program Listing

20

Student Story: Kelly Hoomes

22

Double Owl Pathways

25

Student Story: Adam Kiel

26

Graduate College Staff

29

Dean's Letter

Reflecting on my third year as Dean of the Graduate College, I am pleased to share notable progress in graduate student education at Kennesaw State University. I take pride in our unwavering commitment to student success and advancing priorities integral to KSU's strategic plan to elevate its national standing in education, research, and community impact.

In line with Goal 1: Create a learning environment where students thrive, the Graduate College expanded graduate student success initiatives and further collaborated with other units on campus to cultivate career-oriented partnerships that specifically serve graduate students in their post-education career journeys.

In line with Goal 2: Conduct innovative research that advances society, I am especially proud of the doctoral mentoring program launched in fall 2024. This program seeks to ensure quality mentor-mentee relationships between faculty and students as they engage in inquiry that will advance society. Additionally, we committed to investing in graduate student research support, both through additional dollars that will fund assistantships, as well as funding to support graduate students to attend conferences where they can share their work, network with their peers, and represent KSU as an innovative research environment.

The opening of graduate student success centers in 2023 and 2024 allowed us to grow our programming for graduate students over the past year, invite alumni and business leaders to campus, foster connections with graduate students, and explore opportunities for community partnerships.

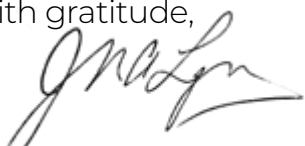
We also launched a new master's degree in artificial intelligence, which in its first year drew 119 new degree-seeking students. These students were part of our largest new student enrollment ever, with 2,950 new graduate students beginning a degree in the last academic year.

Funding for graduate students, coupled with professional and research growth opportunities remain a cornerstone of the mission for the Graduate College. With the generous support of donors, funds for graduate student scholarships increased in the last fiscal year. As we near the end of our capital campaign, the Graduate College is poised to reach its goal of \$3,000,000.

As you explore this year's annual report, I hope you will be inspired by our graduate students whose stories we are honored to share, and we extend an invitation to come to campus and engage with our students, whether it be during Graduate Student Appreciation Week in April, or at a monthly meet and greet in one of our graduate student success centers.

Together, we achieved great things this year, and I look forward to the continued success of our students. Thank you for being part of our journey and for supporting the Graduate College.

With gratitude,



Juliet Langman, Ph.D.
Dean & Professor, Graduate College



Mission

Kennesaw State University transforms lives through academic excellence, innovative research, strong community partnerships, and economic opportunity. We empower our students to become thought leaders, lifelong learners, and informed global citizens by cultivating an inclusive environment that encourages free expression and civil discourse.

Academic Distinction Statement

The Graduate College contributes to the social, economic, and cultural landscape of the greater Atlanta area as well as Georgia, the region and beyond by fostering impactful and accessible graduate education. From enrollment to matriculation, from coursework to research and internships, from graduation to new job opportunities, the Graduate College is building a robust success-oriented environment that encourages students to aspire higher.

The Graduate College partners with the academic colleges and Kennesaw State University's robust student support units to provide a quality experience for all graduate students. We engage in evidence-based and holistic approaches to student success through the academic lifecycle for all graduate students. The Graduate College's professional staff works to ensure student success by anticipating the needs of the University's graduate programs, faculty, and students, raising the quality of graduate education, improving financial support for graduate students, and fostering professional development. From assisting with initial enrollment through guiding students toward the completion of their degrees, to preparing for careers after graduation, the Graduate College staff supports and advocates for graduate students throughout their journey.



By the Numbers

Kennesaw State University offers a variety of graduate programs available on campus, online, and in hybrid formats. As an R2 research institution, KSU is dedicated to research excellence, offering graduate students the opportunity to engage in cutting-edge research alongside faculty members.

Additionally, KSU is deeply committed to community engagement and professional development and offers a variety of professional graduate degrees designed to prepare the next generation of leaders in fields such as engineering, health and human services, business, and more. These programs are tailored to meet the evolving needs of the workforce and empower students to make a lasting impact in their communities and industries.

2024-2025 ACCOMPLISHMENTS



3,216

Total New Students
Enrolled in Fall, Spring, and
Summer Semesters



\$12.12 million Total

in Stipends and Tuition
Support for Graduate
Assistantships
Stipends: \$6.7 million
Waivers: \$5.42 million

9.3% Increase
in all graduate
students
AY25 vs. AY24



\$2,725 Raised on KSU
Giving Day(04/16/2025)

\$2,882,631* Total
toward campaign goal



91,135

Credit Hours Generated
in Fall, Spring, and
Summer Semesters

4,067

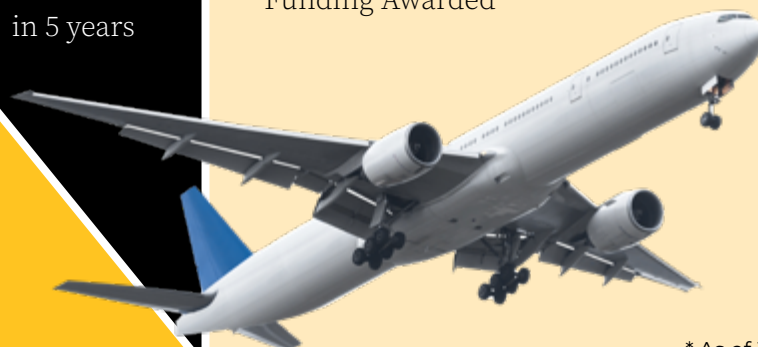
highest amount of
returning enrolled
graduate students
in 5 years

1,720*

Graduate
Degrees
Conferred

Over \$42,000

Graduate Student Research Travel
Funding Awarded



* As of June 30, 2025.

Enrollment Trends

Year to year change in the number of new students
(Fall 2023 to Fall 2024):

+21.42%	▶	Bagwell College of Education
+13.27%	▶	Coles College of Business
+52.17%	▶	College of Architecture and Construction Management
-2.75%	▶	College of Computer and Software Engineering
+5.26%	▶	College of Science and Math
+20.69%	▶	Geer College of the Arts
-5.50%	▶	Radow College of Humanities and Social Sciences
+18.64%	▶	Southern Polytechnic College of Engineering and Engineering Technology
+21.40%	▶	Wellstar College of Health and Human Services

↑
Total
9.67%
increase over
the previous
year.

Top 3 Majors by Enrollment • Fall 2024

Master of Business Administration • 369

MS in Computer Science • 359

MS Cybersecurity • 333





Ph.D. Student's Cutting-Edge Research in Health Tech

By Tracy Gaudlip

Imagine a world where diabetes—a chronic condition in which the body struggles to regulate blood sugar, leading to high blood glucose levels that can damage organs, nerves, and blood vessels—is caught before symptoms begin. Kennesaw State Ph.D. student El Arbi Belfarsi is getting us there.

Globally, diabetes affects over 500 million people, while an estimated 700 million more show signs of prediabetes—many struggling with invasive monitoring or diagnosis that come too late. El Arbi's work on non-invasive glucose tracking could one day save them the pain of daily needle pricks and help catch diabetes before it silently takes hold, preventing the serious consequences of elevated blood sugar, such as heart disease, kidney failure, and vision loss.

El Arbi's path to this groundbreaking research began with a Bachelor of Science in Computer Science and a role as a software engineer at a brokerage firm, where he honed his problem-solving skills. Yet, it was a study abroad program at KSU during his undergraduate studies that opened his eyes to a broader horizon. "I was impressed by the quality of classes and the research opportunities at KSU," he shares. This experience, combined with a growing fascination with AI applications in healthcare—sparked by Dr. Maria Valero's work—drew him back to KSU for a Ph.D. in Computer Science, where he was determined to make a difference.

While El Arbi's research is rooted in computer science, it frequently intersects with other disciplines such as nutrition science, diabetes management, blood banking, and cognitive science. "My research has led to the development of open-source datasets, natural language processing (NLP) models, and comparative studies

aimed at identifying optimal algorithms for managing blood resources and non-invasive glucose monitoring," he explains. This interdisciplinary approach led to the development of open-source data sets, NLP models, and comparative studies, advancing computational methods in healthcare applications.

"The state-of-the-art facilities and research opportunities at KSU have not only enhanced my technical skills but also accelerated my overall development, making my experience at KSU both transformative and rewarding."

—El Arbi Belfarsi
Ph.D. Candidate,
Computer Science

Collaborations with KSU's Human Factors, Operations Optimization, and Ergonomics (HOPE) lab and the Exercise Science lab have been instrumental in shaping El Arbi's research direction. "These partnerships," he says, "provided access to valuable domain expertise, experimental data, and interdisciplinary perspectives that enriched my work."

Selecting a specific area of research is a defining moment in any Ph.D. journey, and for El Arbi, this choice was driven by the desire to transform healthcare with innovative



technology. His decision to concentrate on machine learning applications for managing diabetes and prediabetes aligned perfectly with his goal of making a real-world impact on health through technical innovation.

El Arbi's research has already been marked by significant milestones and achievements. "My research journey has been incredibly rewarding, thanks to the unwavering support of my advisor and colleagues at the lab," he notes. Early exposure to existing studies in Dr. Valero's lab and an extensive literature review paved the way for contributions in non-invasive glucose monitoring. Notable achievements include winning the Best Graduate Research Award at the Student Symposium and securing the runner-up position at the 2024 C-Day Competition for research on estimating glucose levels in in-vitro synthetic blood samples.

The resources available at KSU played a crucial role in El Arbi's academic and professional growth. "The faculty are highly knowledgeable and deeply invested in student success," he

emphasizes. "The state-of-the-art facilities and research opportunities at KSU have not only enhanced my technical skills but also accelerated my overall development, making my experience at KSU both transformative and rewarding."

Looking ahead, El Arbi aims to transform his research into comprehensive software solutions for health monitoring and disease prevention, a pursuit with profound potential to improve health outcomes worldwide. "My findings highlight blood glycemic activity as a crucial predictor of overall health," he notes. This groundbreaking research could revolutionize many areas, from metabolic health to personalized nutrition and preventive healthcare, offering new tools to combat global health issues.

As El Arbi refines his algorithms, he envisions a world where technology monitors health and saves lives. At KSU, he's not just earning a Ph.D. he's building that future, one line of code at a time.



Supporting graduate students through donations to the KSU Foundation empowers promising scholars to pursue higher education by providing crucial financial resources. This support fosters research and enhances the reputation of the University.

To give a gift to the Graduate College, visit giving.kennesaw.edu/online-giving/graduate-college.php.



New Program

Kennesaw State Introduces New M.Ed. in Literacy Education

Kennesaw State University has been approved by the Board of Regents of the University System of Georgia to offer a new Master of Education (M.Ed.) in Literacy Education beginning in 2025. This program blends theory with practice, equipping experienced educators with the tools they need to transform students' lives through literacy.

"We are deeply committed to addressing the evolving needs of educators and the communities they serve," says Traci Redish, Acting Dean of the Bagwell College of Education. She explains, "The M.Ed. in Literacy Education was inspired by the recognition that literacy is foundational to all learning—and that today's teachers need advanced preparation grounded in the Science of Reading, Structured Literacy, and other evidence-based practices to effectively support a wide range of learners."

Literacy is more than just reading and writing. It forms the foundation for learning, critical thinking, and lifelong success. It also plays a vital role in an individual's well-being and economic opportunity. In today's rapidly changing world, strong literacy skills are essential for students to thrive. Yet, literacy gaps persist. KSU's new program is designed to address these challenges directly. "Through this program, we aim to equip educators with the knowledge and tools to close literacy gaps and improve student success," adds Redish.

Housed within the Bagwell College of Education, the M.Ed. in Literacy Education is tailored for working educators and is fully online. It is approved by the Georgia Professional Standards Commission (GaPSC) and aligns with the standards of both the



International Literacy Association (ILA) and International Dyslexia Association (IDA). The curriculum focuses on evidence-based strategies, culturally responsive teaching, and the latest research in reading and writing instruction.

Building on the knowledge and skills educators bring to the classroom, the program empowers them to mentor colleagues, support struggling readers, and implement literacy curricula that meet the needs of PreK-12 learners. Graduates will be prepared for roles such as reading specialists, literacy coaches, and curriculum leaders. Additionally, teachers who complete this program will be eligible for the Dyslexia Endorsement or Certificate.

The impact of literacy extends far beyond the classroom. Literate communities are healthier, more engaged, and more economically resilient. By investing in literacy education, KSU is investing in the future of families in our community and beyond.

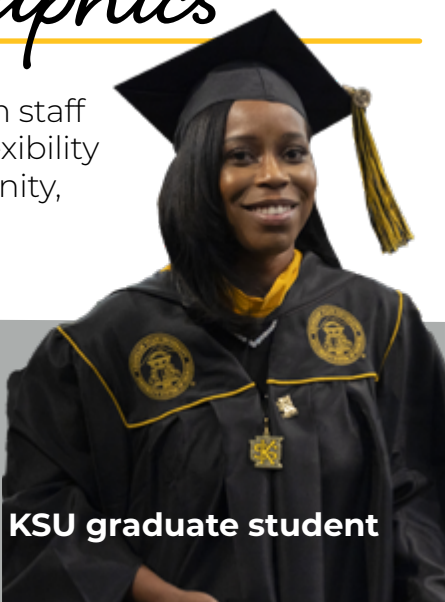
To learn more, visit:

kennesaw.edu/bagwell/degrees-programs/masters/med-literacy-education/index.php

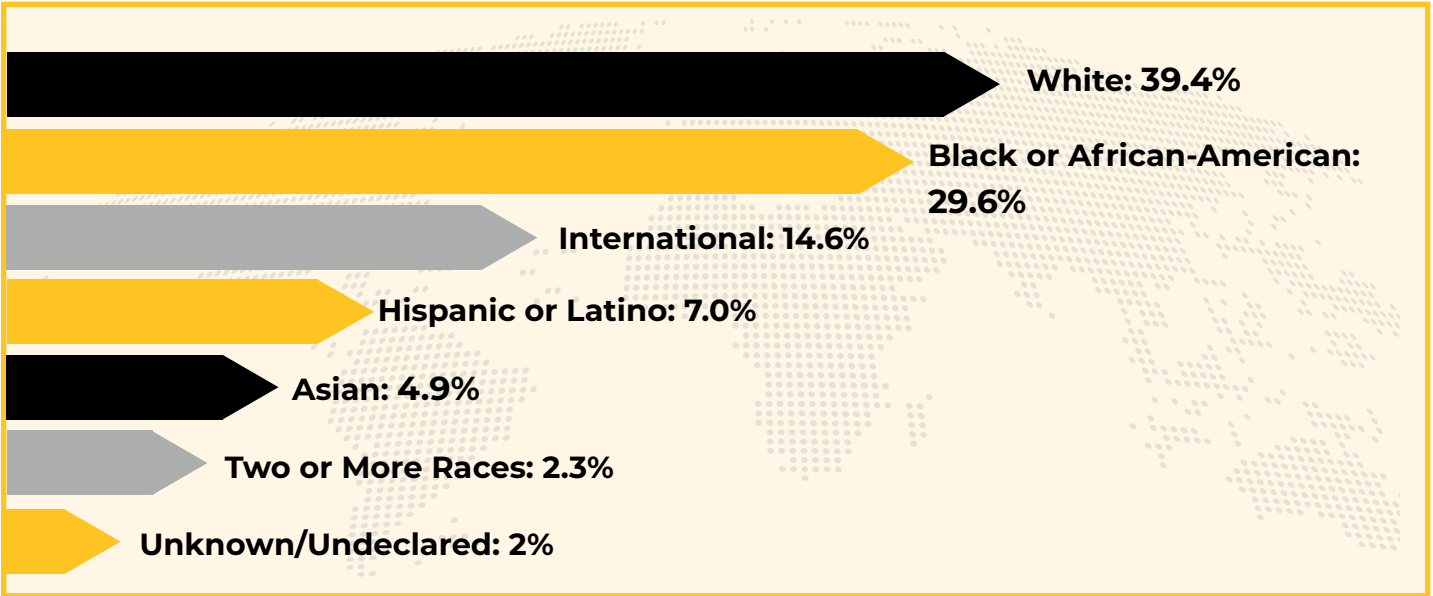
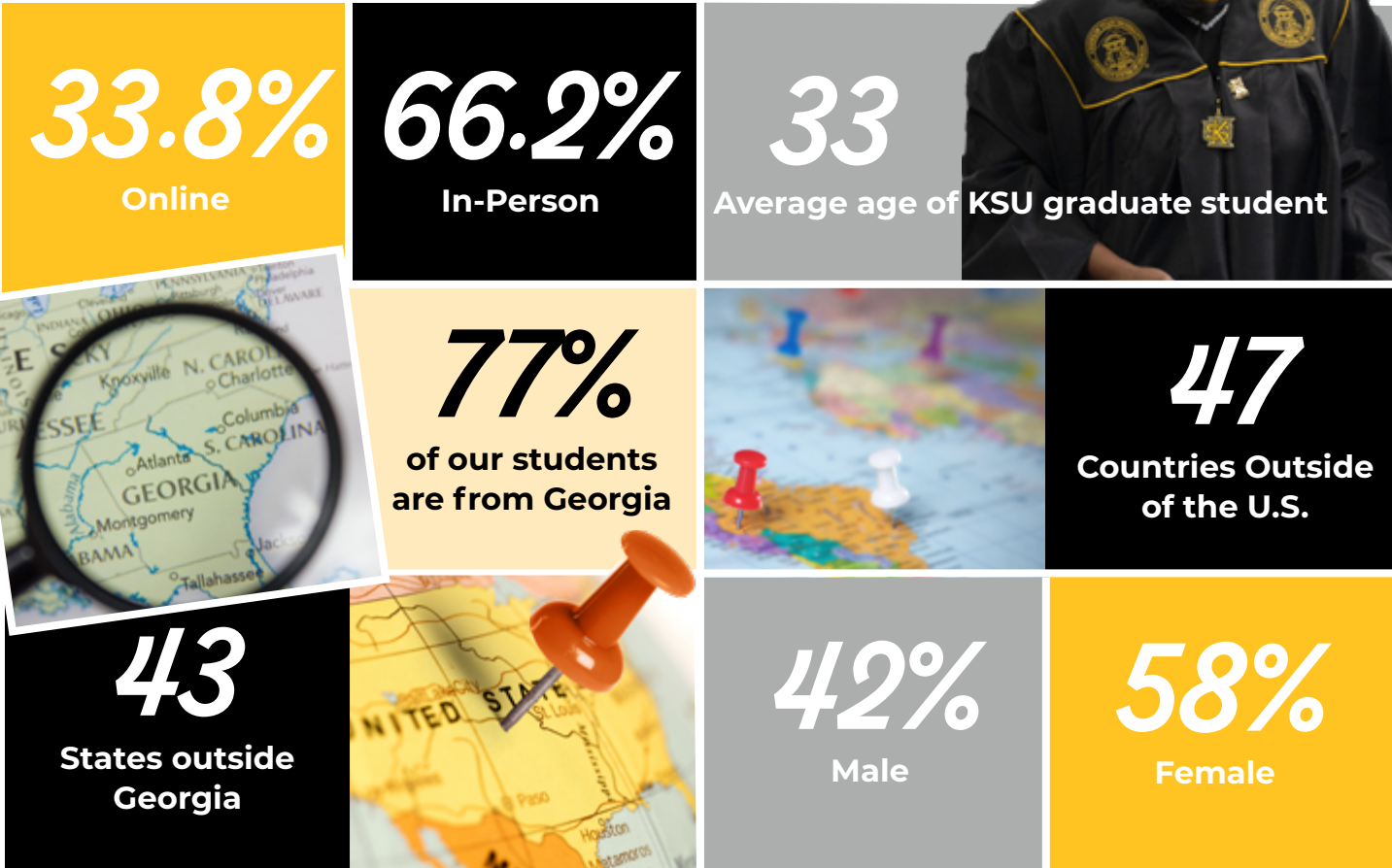


Graduate Student Demographics

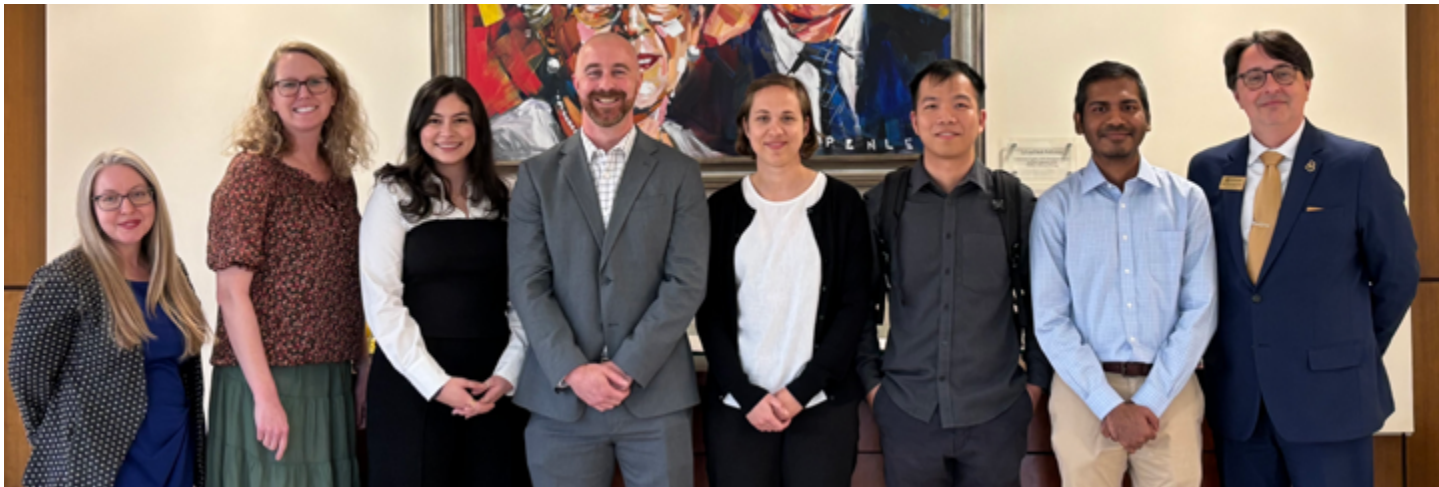
Competitive tuition and scholarships, personalized support from staff and faculty, research opportunities, modern facilities, and the flexibility of on-campus or online learning, all within a supportive community, draw in a varied group of applicants.



Graduate Students 2024-25



Graduate Student Highlights



Students Showcase Research at 10th Annual 3MT Competition

On Thursday, April 3, 2025, the Graduate College hosted its 10th annual Three Minute Thesis (3MT) competition, a signature event that challenges graduate students to present their research in a compelling and understandable way in three minutes or less. Participants are given just three minutes and one static slide to explain their work to a non-specialist audience, making clarity and creativity essential. This milestone year marked a decade of celebrating research excellence and communication skills across disciplines.

The 3MT competition, which originated at the University of Queensland in 2008, has grown into a global academic tradition. It encourages graduate students to distill complex ideas into concise, engaging narratives that resonate beyond their academic fields. The competition not only sharpens public speaking and storytelling abilities but also fosters interdisciplinary appreciation and public engagement with scholarly work.

This year's event featured a diverse lineup of

presentations, each offering a unique glimpse into the innovative research being conducted by KSU graduate students. Among the standout participants was Nina Grundlingh, a Ph.D. candidate in Data Science & Analytics. Her presentation, "Quantifying Uncertainty in Generative Models," earned her the 1st Place award. Under the mentorship of Dr. Herman Ray, Nina tackled the critical issue of uncertainty in AI-generated data—an area with significant implications for the reliability and ethical use of machine learning technologies.

Another remarkable presenter was Wesley Cooper, an Ed.D. candidate in Middle and Secondary Education/Mathematics. His presentation, "Rural High School Students' Mathematical Learner Identity and Mathematical Experiences: Proposal for a Qualitative Study Using Autophotography," captivated both the judges and the audience. Wesley's innovative use of autophotography to explore how rural students perceive and experience mathematics earned him 2nd Place, as well as the coveted People's Choice Award.

Wesley's dual recognition highlights the power of storytelling in educational research. By centering student voices and visual narratives, his proposed study promises to shed light on the often-overlooked experiences of rural learners. His success in the 3MT competition underscores the importance of research methodologies and the value of connecting academic work to real-world educational challenges.

The competition was judged by a panel of esteemed faculty and administrators: Dr. Amy Buddie, Director of Undergraduate Research; Dr. Sherrill Hayes, Assistant Vice Provost; and Dr. Heather Abbott, Interim Director of Research Development. Their expertise and thoughtful evaluation helped spotlight the most impactful and well-communicated research presentations of the day.

Ultimately, the 3MT competition continues to serve as a vital platform for emerging scholars to share their passion and insights with broader audiences. This year's winners, Nina

Grundlingh and Wesley Cooper, exemplify the spirit of the competition—clarity, creativity, and impact. Their achievements reflect not only their individual excellence but also the strength of mentorship and the vibrant research culture fostered by the Graduate College.



To sponsor graduate events such as the 3MT competition, visit giving.kennesaw.edu/online-giving/graduate-college.php and put the designation in the comments section.

2025 3-Minute Thesis (3MT) Participants

- **Hana Abouward, M.S. Exercise Science;** Faculty advisor: Dr. Daphney Carter
The Effects of Added Blood Flow Restriction to Moderate Intensity Aerobic Exercise on Acute Metabolic Rate and Cardiovascular in Adults
- **Faysal Chowdhury, Ph.D. Interdisciplinary Engineering;** Faculty advisor: Dr. Mahyar Amirgholy
Emissions from Vehicles and Power Plants with Increased Adoption of Electric Vehicles
- **Wesley Cooper, Ed.D. Middle and Secondary Education/Mathematics;**
Faculty advisor: Dr. Camille Sutton-Brown
Rural High School Students' Mathematical Learner Identity and Mathematical Experiences: Proposal for a Qualitative Study Using Autophotography
 - **2nd Place Winner**
 - **People's Choice Winner**
- **Nina Grundlingh, Ph.D. Data Science & Analytics;** Faculty advisor: Dr. Herman Ray
Quantifying Uncertainty in Generative Models
 - **1st Place Winner**
- **Manh Nguyen, Ph.D. in Computer Science;** Faculty advisor: Dr. Liang Zhao
Spiking Neural Networks in Edge Artificial Intelligence

Research Spotlight



Kennesaw State Graduate Student Researches Ways to Improve Quality of Survey Data

Choosing Kennesaw State for her master's was a natural decision for Kristine Duncan who grew up in Kennesaw and was familiar with the university's strong academic reputation.

KSU Graduate Student Bridging the Gaps in Counterterrorism Diplomacy

For Richa Bhattarai, doctoral candidate in the international conflict management program, research is more than an academic pursuit—it's a bridge between history, policy, and diplomacy.



KSU Ph.D. Student's Journey into the Heart of Guatemala's Migration Story

In the rugged northwest highlands of Guatemala, Helen Hobson, a Ph.D. candidate in International Conflict Management, carved out a unique niche in migration studies.



Kennesaw State Grad Student Contributes to Alzheimer's Research

From a young age, Venkata Sai Bhargav Mutala was fascinated by technology and its potential to solve real-world problems.



KSU Doctoral Student Highlights Diaspora's Role in Rebuilding Somalia

What happens when the most educated and skilled citizens leave a nation in turmoil, only to return years later with new ideas and resources? Mohamed Hashi, Ph.D. candidate in International Conflict Management, explores this phenomenon in his research, focusing on the Somali diaspora and their impact on post-conflict governance.



KSU Graduate Student Reflects on the Impact of Faculty Mentorship

At KSU, professors don't just lecture; they light the spark that fuels dreams. For Shimaa

Hamza, this spark transformed her from a curious undergraduate into a passionate master's student and aspiring mentor.



To read the full articles, scan the QR code to [link](#) to our news page.



MSIT Student Exploring the Intersection of Machine Learning and IoT

By Tracy Gaudlip

Yi Gu is a dedicated student in the Master of Science in Information Technology (MSIT) program at Kennesaw State University. With a strong academic background and a passion for practical applications of technology, Yi shares his experiences, challenges, and aspirations in the field of information technology.

His current research focuses on improving smart devices within the Internet of Things (IoT). IoT refers to everyday objects, like home gadgets and wearable tech, that are connected to the internet and collect and share data. His work involves using advanced computing techniques to analyze how well these devices perform various tasks while keeping data private and secure. “My research aims to carry out a detailed analysis of how Federated Learning (FL) systems work on different machine learning tasks in various situations,” he explains. FL is a way that devices learn on their own without sharing private data, as each device only shares its progress, keeping information safe.

Addressing important privacy and efficiency concerns, his research makes these interconnected devices smarter and safer for everyday use. IoT represents a significant integration of computer science and daily life, enabling smarter and more connected environments. “Recognizing the potential impact of Federated Learning in IoT, I chose to focus my research on this intersection,” Yi notes, aligning it with his interests and the needs of the field.

During his undergraduate studies at Dalian University of Technology in China, where he earned a bachelor’s degree in engineering in computer science and technology, with a minor in English in June 2023, Yi developed

a keen interest in the real-world applications of computing and machine learning technologies. Before joining KSU for the MSIT program, he worked as a field application engineer for TP-Link in Shenzhen, China. This background provided a solid foundation for his advanced studies and research. His interest in solving practical problems led him to pursue his graduate degree at KSU as a steppingstone toward a Ph.D. program. This academic path supports his long-term goal of contributing to research that enhances the practical implementation of computing technologies.

Facing two primary challenges during his graduate research journey, he encountered setbacks in experimental progress and paper rejection during the publication process. “To address these challenges, I maintained a positive mindset and approached obstacles as opportunities for growth,” he shares. By consulting relevant literature and engaging in discussions with advisors, he has been able to methodically overcome these obstacles. “While it can be disappointing, I have come to understand that rejection is a normal part of academic research,” he reflects. He uses reviewer feedback to identify shortcomings and improve his work, preparing stronger submissions for future publication attempts.

Throughout his research journey at KSU, Yi has already achieved several significant milestones. He published papers at the 62nd ACM Southeast 2024 Conference and in the Journal Electronics. Currently, he is working on another paper and preparing for his master’s thesis, reflecting his ongoing contributions to the field.

Initially, he had limited research experience but says that during his time at KSU, he’s

really built up his skills and become much more proficient in conducting research. During his first project, he gained knowledge from faculty about various research methodologies and improved his work routine. “This project led to the publication of a conference paper, and subsequent projects have resulted in further publications,” he notes. He continues to identify research gaps and explore solutions, developing into a junior independent researcher.

Yi says his experience at KSU has been extremely positive and explains that faculty members are dedicated, approachable, and provide well-structured lectures. On the research side, advisors offer invaluable guidance and support. “Senior faculty like Dr. Shaoen Wu provide high-level guidance on research methodologies, while junior faculty like Dr. Liang Zhao and Dr. Bobin Deng offer detailed research direction,” he says. Additionally, the resources provided by KSU have enhanced his learning experience.

One of his most memorable experiences as a graduate student was a meeting arranged by Dr. Shaoen Wu at the beginning of his studies. “During this meeting, Dr. Wu, along with my advisor, Dr. Liang Zhao, provided me with a comprehensive overview of the program and shared valuable methodologies for conducting research and structuring my studies,” he recalls. The guidance received during this meeting has continued to benefit him, shaping his approach to coursework, research, and long-term aspirations.

Yi believes that his academic responsibilities are priorities but also emphasizes the importance of maintaining his physical and mental well-being. “To achieve a balanced schedule, I dedicate time each Sunday to plan and distribute academic responsibilities for the upcoming week,” he explains. This structured approach allows him to manage his workload effectively while also integrating self-care, physical activities, and social engagements.

“I meet with the International Students Fellowship, a KSU registered student organization, every Friday night to love, serve, and help international students spiritually, physically, and mentally,” Yi shares. He also enjoys attending KSU workshops like CPR/AED/First Aid Training or Naloxone Training, noting, “I want to be ready to help others when possible.”

Additionally, Yi makes use of the recreation center on both campuses, praising the great resources available. “I also enjoy walking on campus on sunny afternoons,” he adds, appreciating the many opportunities the university provides to support a balanced and fulfilling lifestyle.

After completing the MSIT program, Yi plans to pursue a Ph.D. in a research field closely related to his current area of study. “My long-term goal is to establish myself as a researcher in academia, where I can continue to expand knowledge and contribute to technological advancements in my field,” he shares.

Highlighting the MSIT program at KSU for its industry-aligned curriculum, extensive resources, and exceptional faculty, Yi adds further encouragement to future students. “They should take full advantage of the university’s academic and professional resources, including research opportunities, faculty mentorship, and networking events. By doing so, students can maximize their learning experience and position themselves for success in their future careers.”

To donate to a graduate scholarship, visit
giving.kennesaw.edu/online-giving/graduate-college.php.



Graduate Student Appreciation Week

The Graduate College at Kennesaw State University marked Graduate Student Appreciation Week during the last week of March 2025, celebrating the invaluable contributions, impact, and significance of its graduate students.

This year's lineup featured a mix of engaging in-person events designed to foster community and professional growth.

- **The week-long festivities commenced on Monday, March 31, with kickoff events held on both the Kennesaw and Marietta campuses.** Students were greeted with tables offering free t-shirts, swag items, and a chance to address general questions about their graduate experience.
- **On Tuesday, April 1, alumnus Alexander Nixon (MBA '21) led an inspiring workshop titled "*Learning to Fly: Helping You Soar Outside the KSU Nest*".** The session provided practical advice and insights for students preparing to transition to their professional careers.
- **The following evening, Wednesday, April 2, the third annual Wine & Cheese event drew a lively crowd.** This event offered graduate students a relaxed setting to connect with peers, faculty, and Graduate College staff over glasses of wine and a variety of cheese pairings.
- **The week's centerpiece, the Three Minute Thesis (3MT) competition, took place on Thursday, April 3.** This highly anticipated event showcased the diverse and innovative research projects undertaken by KSU graduate students. Competitors distilled complex ideas into concise, compelling three-minute presentations. A reception followed, where participants mingled with



attendees and celebrated the winners, who were recognized with awards for their outstanding performances.

- **Wrapping up the week on Friday, April 4, our first Game Night brought students together for an evening of fun and camaraderie.** The event featured a variety of games, encouraging friendly competition and bonding.

These enriching experiences are supported by generous contributions to the KSU Foundation, reflecting a deep commitment to cultivating a vibrant academic environment that champions graduate students' needs and ambitions.

The funding empowers the Graduate College to offer events and initiatives that extend beyond academics, nurturing students' personal development and overall well-being.



Graduate Programs by College for 2025 and Beyond

Clarice C. and Leland H. Bagwell College of Education

Master of Arts

- Teaching, M.A.T.

Master of Education

- Educational Leadership, M.Ed.
- Elementary and Early Childhood Education, M.Ed.
- Instructional Technology, M.Ed.
- Literacy Education, M.Ed.
- Secondary and Middle Grades Education, M.Ed.
- Special Education, M.Ed.
- Teacher Leadership and Educational Leadership, M.Ed.
- Teaching of English to Speakers of Other Languages (TESOL), M.Ed.

Educational Specialist

- Curriculum and Instruction, Ed.S.
- Educational Leadership, Ed.S.
- Instructional Technology, Ed.S.
- Secondary and Middle Grades Education, Ed.S.
- Special Education, Ed.S.

Doctorate of Education

- Educational Leadership, Ed.D.
- Instructional Technology, Ed.D.
- Secondary and Middle Grades Education, Ed.D.
- Teacher Leadership, Ed.D.

Post-Baccalaureate Certificate

- Autism Spectrum Disorder Certificate
- Coaching Certificate
- Dyslexia Certificate
- English to Speakers of Other Languages Endorsement Certificate
- Gifted Education Certificate
- Online Teaching Endorsement Certificate
- Personalized Learning Certificate
- Reading Education Certificate Endorsement
- STEM Education Endorsement Certificate
- Teaching English in Global/Local Contexts Certificate
- Urban Education Endorsement Certificate

Post-Master's Certificate

- Curriculum and Instruction Certificate
- Higher Education Administration Post-Master's Certificate
- Post-Master's Certificate in Educational Leadership - Tier I

- Post-Master's Certificate in Educational Leadership - Tier II
- Teacher Leadership Post-Master's Certificate

Non-Degree

- Computer Science Endorsement

College of Architecture and Construction Management

Master's Degree

- Construction Management, M.S.

College of Computing and Software Engineering

Master's Degree

- Artificial Intelligence, M.S.
- Computer Science, M.S.
- Cybersecurity, M.S.
- Data Science and Analytics, M.S.
- Information Technology, MSIT
- Software Engineering, MSSWE

Doctor of Philosophy

- Computer Science, Ph.D.
- Data Science and Analytics, Ph.D.

Post-Baccalaureate Certificate

- AI and Cloud Technology Graduate Certificate
- Computer Science Foundations Certificate
- Data Analytics and Intelligent Technology Certificate
- Enterprise IT Management Certificate
- Information Technology Foundations Certificate
- Information Technology Security Certificate
- Software Engineering Certificate
- Software Engineering Foundations Certificate

College of Science and Mathematics

Master's Degree

- Chemical Sciences, M.S.
- Integrative Biology, M.S.

Michael J. Coles College of Business

Master's Degree

- Accounting, MAcc
- Business Administration, MBA
- Digital Financial Technologies, M.S.

- Healthcare Management and Informatics, M.S.
- Information Systems, MSIS

Doctor of Philosophy

- Business Administration, Ph.D

Dual Degree

- Business Administration/Conflict Management Dual Master's Degree (MBA/MSCM)
- Business Administration/Information Systems Dual Master's Degree (MBA/MSIS)
- Business Administration/Public Administration Dual Master's Degree (MBA/MPA)

Post-Baccalaureate Certificate

- Business Intelligence Certificate
- Financial Technology (FinTech) Certificate
- Information Security and Assurance Certificate

Post-Master's Certificate

- Business Research Methods Post-Master's Certificate

Norman J. Radow College of Humanities and Social Sciences

Master's Degree

- American Studies, M.A.
- Conflict Management, MSCM
- Criminal Justice, M.S.
- Integrated Global Communication, M.A.
- International Policy Management, M.S.
- Professional Writing, MAPW
- Public Administration, MPA

Doctor of Philosophy

- International Conflict Management, Ph.D.

Dual Degree

- Public Administration/ Criminal Justice Dual Master's Degree (MPA/MSCJ)
- Public Administration/Integrated Global Communication Dual Master's Degree (MPA/MAIGC)

Post-Baccalaureate Certificate

- American Studies Certificate
- Artificial Intelligence & Writing Technologies

Certificate

- Creative Writing Certificate
- Professional Editing and Publishing Certificate
- Professional Writing for International Audiences Certificate
- Screen & Television Writing Certificate

Robert S. Geer College of The Arts

Master's Degree

- Art and Design, M.A.

Southern Polytechnic College of Engineering and Engineering Technology

Master's Degree

- Civil Engineering, MSCE
- Electrical and Computer Engineering, M.S.
- Engineering Management, MSEM
- Intelligent Robotic Systems, M.S.
- Mechanical Engineering, MSME
- Systems Engineering, MSSENG

Doctor of Philosophy

- Interdisciplinary Engineering, Ph.D.

Post-Baccalaureate Certificate

- Six Sigma Green Belt Certificate
- Systems Engineering Certificate

Wellstar College of Health and Human Services

Master's Degree

- Exercise Science, M.S.
- Family Nurse Practitioner, MSN
- Leadership in Nursing, MSN
- Prosthetics and Orthotics, M.S.
- Social Work, MSW

Dual Degree

- Business Administration/Social Work Dual Master's Degree (MBA/MSW)

Post-Baccalaureate Certificate

- Leadership in Sport and Exercise Certificate
- mHealth Certificate
- Social Entrepreneurship Certificate

Post-Master's Certificate

- Nurse Educator Post-Master's Certificate
- Psychiatric Mental Health Nurse Practitioner Post-Master's Certificate





Kennesaw State Graduate Student's Tribute to Victory Gardens

By Emily Franke

During the years of World War I and World War II, Americans turned to their backyards and community spaces to cultivate "Victory Gardens." These small, homegrown plots of vegetables and fruits became a symbol of resilience and patriotism, as citizens sought to support the war effort by reducing the demand on public food supply. Inspired by this historical movement, Kelly Hoomes, Research Specialist at the KSU Museums, Archives and Rare Books (MARB) and a recent KSU graduate of the Master of Arts in American Studies program (MAST), chose to focus her capstone project on victory gardens.

Growing up, Kelly was deeply influenced by her family's gardening traditions. Her grandparents maintained a backyard full of vegetables, a practice her parents continued with their own garden. These early experiences instilled in her a love for gardening and an appreciation for the self-sufficiency it provided. "The resurgence of victory gardens prompted me to explore how the World War victory garden movements transformed vegetable gardening into powerful symbols of what people can do for themselves or their country in times of trouble," Kelly explains. When it came time to create her capstone project, Kelly drew on these formative memories and her passion for history to develop a traveling trunk titled "Victory Gardens: Helping on the Homefront." This project aims to educate students about the historical significance of victory gardens, highlighting how these gardens have transformed into powerful symbols of self-sufficiency and community support.

The traveling trunk was created by a developmental process for the content and materials that allowed it to be easily

accessible and interesting to fifth graders. Lesson plan activities were made using references from the Georgia Department of Education's Georgia Standards of Excellence. Kelly worked closely with Museum of History and Holocaust Education (MHHE) interim director Dr. Andrea Miskewicz, who previously worked as MHHE's education manager and middle school teacher. To appeal to the fifth-graders, Kelly explains that she "incorporated hands-on activities and made connections to what was in their world." This included allowing the students to handle artifacts and plant seeds while analyzing content, while also making gardening a simpler task.

Public history projects like the traveling trunk make history accessible by removing barriers and directly presenting history to people. The traveling trunk is utilized in schools and outdoor exhibits to learn and make connections. Kelly states that "the content inspires people to make changes in their lives and communities based on what they learn. It affects people. Public history projects bring history alive." Projects like Kelly's have the capacity to introduce people to new perspectives.

Kelly hopes that the students using the traveling trunk will learn that similarly to the victory gardens of the World Wars, growing and eating healthy foods can encourage hope and solution in communities. She hopes that students will find inspiration from a period where people came together despite hardships. The initial response from students and teachers has been positive. "We should get a good set of feedback in May when MHHE will use the trunk during their Homeschool Day about food and war," Kelly states. After that, more responses to the project are expected.



Driven by a desire to find a program that extended beyond traditional historical analysis, Kelly chose to pursue a degree in American Studies. Her interest in the composition and culture of America led her to discover that the American Studies program offered a variety of valuable tools for her academic journey. “After years of working in the field and struggling to find a master’s program that truly resonated with me, I finally discovered the American Studies program at KSU,” she explains. The faculty and staff provided a supportive environment, with professors who genuinely cared about her learning and well-being. Additionally, the library and writing center proved to be invaluable resources throughout her studies.

The American Studies program offered plenty of valuable experiences to gain new skills and expand a portfolio. It provided Kelly a chance to present a conference paper at the Southeastern American Studies Conference in Atlanta in 2023. Other memorable experiences included working on a digital project for Humanities Action Lab and El Refugio and translating letters from detained individuals at Steward Detention Center in Lumpkin, Georgia. “It was a moving and memorable experience that forever changed the way I see immigrants and detained individuals.” The program provided Kelly with valuable skills and knowledge, promoting critical thinking and enhancing her research capabilities. Kelly explains, “When I work on analyzing research or curating exhibits, I’m

able to incorporate meaningful content that broadens perspectives and hopefully inspires people.” The American Studies program helped her understand narrative origins and establish new ways to approach common themes and attitudes found in American history or culture. Kelly also recently won the Outstanding Student Scholar for Masters of American Studies for the 2024-2025 school year.

Equipped with a master’s degree from KSU, Kelly is well-prepared to advance in her field, and she plans to continue working on linking history, nature, and science. Her particular interests include promoting “food sovereignty and self-sufficiency” and helping people engage with natural and cultural resources while expanding on the stories people tell. Kelly is currently working with an applied research intern at the MHHE to expand MHHE’s victory garden vegetable plots.

For anyone considering the Master of Arts in American Studies at KSU, Kelly offers valuable advice. “Think about your research and what inspires you,” she explains. “Then, look at the MAST website and course catalog to make connections. Envision how you could apply the material to your career.” She also suggests reflecting on the objectives of the MAST program and how it could make you a better researcher, journalist, or teacher, or other careers. Additionally, she stresses the importance of utilizing the community as a resource for helpful tips and information. “Enroll in the Master of Arts in American Studies program at KSU if you wonder what it means to be an American, are inspired by social and cultural movements, question history and its relevance to current events, or strive to make a difference,” Kelly concludes.



To donate to a graduate scholarship, scan the QR code:

DOUBLE OWL PATHWAYS

Kennesaw State University's Double Owl Pathways allow students to fast-track their education by earning both a bachelor's and master's degree in less time. This program is ideal for families looking to support their children's educational goals while saving time and money. Students can double-count up to nine graduate credit hours toward both degrees, potentially completing their master's degree a year sooner and entering the workforce with a competitive edge.

Eligibility requires completing 90 undergraduate credit hours and meeting specific GPA criteria. Pathways are available in fields like business, education, engineering, and sciences. By taking graduate courses at the undergraduate rate, students can save on tuition and use financial aid, reducing overall costs. The Double Owl Pathway is a smart choice for students seeking a cost-effective, accelerated path to advanced qualifications and future success.

For more information, visit kennesaw.edu/double-owl

Top Programs

- Exercise Science BS—Exercise Science M.S.
- Cybersecurity BS—Cybersecurity M.S.
- Elementary Education B.S.—
Elementary and Early Childhood Education, M.Ed.
- Computer Science B.S.—Computer Science M.S.
- Mechanical Engineering B.S.—
Mechanical Engineering M.S.
- Marketing BBA—Business Administration MBA
- Criminal Justice B.S.—Criminal Justice M.S.
- Civil Engineering B.S.—Civil Engineering M.S.
- Management BBA—
Business Administration MBA
- Criminal justice, B.S.—Cybersecurity, M.S.
- Psychology, B.S.—Social Work, MSW
- Computer Engineering B.S.—
Electrical and Computer Engineering M.S.
- English B.A.—Professional Writing M.A.
- Industrial Engineering Technology B.S.—
Engineering Management M.S.
- Accounting, B.S.—Business Administration, MBA
- Electrical Engineering B.S.—
Electrical and Computer Engineering M.S.



222 Accepted in 2024-2025 AY
4.23% increase over the previous AY



Kennesaw State Student Draws on Personal Experience in Graduate Program

By David Roberts

For as long as he can remember, Adam Kiel has worn a prosthetic leg. Diagnosed with fibular hemimelia, a condition in which a child is born missing part of or all of a bone in a lower leg, he received his first prosthesis at 11 months old. Now, through the Master of Science in Prosthetics and Orthotics program at Kennesaw State University, Kiel is pursuing a career as a prosthetist, hoping to use his lived experience to reach others.

Kiel's parents learned about his fibular hemimelia condition before he was born. They had two options: Either attempt to reconstruct the lower limb through a series of surgeries or amputate the limb fully.

"They met with a lot of doctors and talked with them," Kiel said. "At 11 months, they decided to amputate my foot, and I've had a prosthesis since that moment."

Kiel's prosthesis allowed him to participate in sports as a child, first playing baseball before finding his niche with lacrosse. He even admits his prosthesis came with certain advantages in sports, especially when tending the goal. "It didn't hurt when I got hit in the leg," Kiel said with a laugh. "It was pretty funny; the ball would bounce so far."

Kiel always had an interest in healthcare, and by high school, he knew he wanted to pursue a career in prosthetics. "I did a lot of reflecting on experiences growing up and some of the prosthetists who made my leg and the impact they've made on my life," Kiel said. "Some of those experiences made me want to be able to give back. Being able to do that was just something that I really valued."

After graduating from North Paulding High School in 2019, he enrolled at Georgia

Southern University and pursued a degree in exercise science. While completing his undergraduate degree, Kiel spent two summers working at a prosthetics clinic in Savannah, where he continued developing his lab skills while discovering his passion for connecting with patients through sharing his own story.

"A lot of times after an amputation, you're going to the doctor a lot and you start seeing the same people," Kiel said. "But then you go into a clinic and someone pulls up their pant leg and says, 'Hey, I have a prosthesis, too.' Being able to connect with them that way is something I want to be able to do in the future."

Kiel's lived experience made him an ideal candidate for KSU's Master of Science in Prosthetics and Orthotics program, an interdisciplinary graduate degree in the Department of Exercise and Sport Management in the Wellstar College of Health and Human Services. The two-year program features clinical, technical, and research components, allowing Kiel to receive hands-on experience and to see how the field of prosthetics is evolving.

Professor of exercise science Mark Geil serves as a research mentor to Kiel and has witnessed the technological advancements that have occurred in the decades since Kiel received his first prosthesis. "The clinical care is similar," Geil said. "What has changed since that time is the technology and the options we have available for prosthetic care."

Geil highlights advancements in material science, such as prostheses created out of carbon fiber, that have significantly enhanced the user experience. An example



is the microprocessor-controlled prosthetic knee, which include sensors in the limb and foot that communicate to the prosthesis when to change the stiffness based on terrain, such as walking up and down stairs.

“One of the things you get the opportunity to see sometimes is a person walking down stairs, step over step, for the first time in their lives, because the knee understands, ‘Oh, we’re going down stairs now,’” Geil said. “It gradually lowers the stiffness so that you can flex your knee when you’re descending the step. That sounds like a very simple thing, but when you’re not hopping down the stairs, you are participating in society in a new way, and you have a new area of mobility that is a sense of freedom for you.”

As advancements occur in powered prosthetic components, the ultimate goal is connecting prosthetic control to existing neural pathways, which would allow users the sort of control needed to actuate individual fingers from a mere thought.

However, to achieve that goal, Geil notes that significant progress needs to be made in material science, 3D printing, and brain-device interface – challenges awaiting the next generation of researchers.

Kiel hopes to join the ranks of prosthetists after graduating from KSU this year, using his own story to impact others.

“I don’t know where I’ll be,” he said. “But wherever I am, it’s helping people with limb loss and making prosthetics and orthotics with them and just trying to keep people active and doing what they were doing before.”

To donate to a graduate scholarship, visit giving.kennesaw.edu/online-giving/graduate-college.php.



Graduate College Staff

Our graduate staff work to help students through the graduate admissions process, to plan out the needs of the graduate programs, and to prepare students for life after graduate school.

Katie Allran, M.A.

Customer Relationship
Management Coordinator

Michelle Davidson

Executive Administrative Assistant

Tracy Gaudlip, M.A.

Marketing & Communications Specialist

Shana Hill, Ed.D.

Director of Graduate Student Support

James Kohlmeier

Strategic Business Data Analyst

Quin Glass, M.A.

Graduate Admissions Counselor

Bobbi Harman

Graduate Student Service Specialist

Swati Kulkarni, M.S.

Graduate Admissions Counselor

Juliet Langman, Ph.D.

Dean and Professor of Applied Linguistics

Taylor Mason, M.B.A.

Graduate Admissions Counselor

Tyler Mueller, M.S.

Graduate Admissions Counselor

Jetoni Oakley

Admissions Application Processor

Nikki Palamiotis, M.P.H.

Assistant Dean
Graduate Student Services

Janessa Perez

Graduate Admissions Counselor

Nasia Perez

Graduate Admissions Counselor

Alonna Rogers

Admissions Application Processor

Melinda D. Ross

Director of Graduate Student Support

Donna Tuitt, M.B.A.

Graduate Admissions Processing Coordinator

... Plus a team of student workers



Clarice C. & Leland H. Bagwell College of Education

College of Architecture and Construction Management

College of Computing and Software Engineering

College of Engineering and Engineering Technology

College of Science and Mathematics

Michael J. Coles College of Business

Norman J. Radow College of Humanities and Social Sciences

Robert S. Geer College of the Arts

Wellstar College of Health and Human Sciences



3391 Town Point Dr NW
Suite 1700
Kennesaw, GA 30144
470-578-6738

gradcollege@kennesaw.edu
kennesaw.edu/graduate