



KENNESAW STATE UNIVERSITY

RETIREES ASSOCIATION NEWSLETTER



The Kennesaw State University Retirees Association (KSURA) is excited to welcome you to a new year. In this newsletter you will find:

- information about events scheduled for Fall semester
- updates on our Legacy Scholarship
- a recap of the recent Retirement Ceremony held in April
- an announcement of USC 2026 healthcare plans and premiums

We hope you find this newsletter helpful and we encourage you to attend any and all events that match your interests. KSURA events are open to ALL retirees, regardless of whether you are a member. Attending an event will give you the opportunity to learn something new as well as catch up with your fellow KSU/SPSU retirees.

2025 Fall Welcome Event

Date: 12 September 2025

Time: 10 a.m. - 12 p.m.

Location: Town Point Bldg, Room 4750 (Kennesaw Campus)
3391 Town Point Drive, Kennesaw, GA 30144

Join us for our Fall Welcome event as we walk through the purpose and history of the KSU Retirees Association, update the membership on our finances and the Legacy Scholarship, outline the benefits of membership, hear from the Osher Lifelong Learning Institute (OLLI), the KSU Fitness Center, and CARE and reconnect with each other. We will have social time before and after with light refreshments.

The location is on the fourth floor of the Town Point building, exit the elevators to the right and then a right down the long hall.

KSU RETIREES ASSOCIATION

FALL 2025 EVENT CALENDAR

9 SEPTEMBER TUESDAY	12 SEPTEMBER FRIDAY	10 OCTOBER FRIDAY	14 OCTOBER TUESDAY	11 NOVEMBER TUESDAY	TBD NOVEMBER	8 DECEMBER MONDAY
11:30 A.M. - 1:00 P.M.	10:00 A.M. - 12:00 P.M.	1:00 P.M. - 2:00 P.M.	12:30 P.M. - 2:00 P.M.	11:30 A.M. - 1:00 P.M.	TBD	TBD
COLLOQUIUM	FALL WELCOME EVENT	ROBOTICS LAB TOUR	COLLOQUIUM	COLLOQUIUM	MEDICARE/HEALTH INSURANCE UPDATE	ANNUAL HOLIDAY GATHERING
Dr. Rachael Vause, Assistant Professor of Art History	Annual Update on the KSURA from the Co-Chairs along with social time and refreshments	Tour of the Robotics Lab on the Marietta Campus	Dr. Bob Buresh, Professor of Exercise Science	Dr. Garrett Hester, Associate Professor of Exercise Science	Dr. Dorothy Zinsmeister, Professor Emeritus	Social Event to celebrate the holiday season
Kennesaw Campus Town Point Building Room 2220	Kennesaw Campus Town Point Building Room 4750	Marietta Campus Engineering Technology Building Room Q 204	Kennesaw Campus Town Point Building Room 4750	Kennesaw Campus Town Point Building Room 4750	Kennesaw Campus Town Point Building Room 4750	Kennesaw Campus KSU Center Room 400

Steering Committee meetings will be Oct 10 (Marietta campus) and Nov 14 (Kennesaw campus) at 10 a.m.

2025 Annual Retirement Ceremony



The 2025 Annual Retirement Ceremony was held in late April honoring 58 retirees that retired between April 2024 and April 2025. The new retirees were guided to their legacy brick at the Legacy Gazebo before returning to the KSU Center for a wonderful ceremony. The new retirees are:

Jon Marc Anderson
Li Chen
Ming Chen
Sharon Chesser
William Stan Crowder
Angela DeAngelo
Terry Debord
Ralph Durham
Linda Galloway
Elizabeth Giddens
Matthew Griffin
Tamara Grooms
Laura Haire
Mark Hiatt
Mary Hiatt

Rick (John) Hofelich
Benjamin Huck
Chih-Cheng Hung
Wayne (Scott) Jordan Jr.
Victor Kane
Theresa Kennedy
Sue King
Vivian Kirby
Rommy Lane
Terry Loe
Kimberly Loomis
Helen Maddox
Leslie McClane
Robert McLain
Donna McPherson

Mehrdad Mesbahi
Katheryn Mickey
Kevin Mothersbough
Kathryn Negrelli
Rhonda Nemeth
Barbara Neuby
Valerie Patrick
Maureen Patton
Suzanne Petersen
Richard Pugh
Laura Robinson
Lori Scheck
Patrick Sheehan
Laurence Sherr
Deborah Smith

Sabine Smith
Melanie Sumner
Walter Thain
Ethel Kay Traille
Robert (Keith) Tudor
Hector Vasquez
Dale Vogelien
Jeffrey Wagner
Pamela Walters
Shannon West
Alfreda Williams
Dale Zaborowski
Chi Zhang

Congratulations to all the new retirees!

Retirees Legacy Scholarship Change

In the past, the KSU Retirees Association has had two scholarship funds for KSU students. Our annual scholarship fund collected donations to be distributed each year, while our endowed scholarship fund provided scholarships for the future.

The generous donations received over the years have allowed us to sunset the Annual scholarship and those funds have been rolled into the Endowed scholarship, per the original contract for the scholarship. Thus, there is now just one Retirees Legacy Endowed Scholarship and all donations will go into that fund.

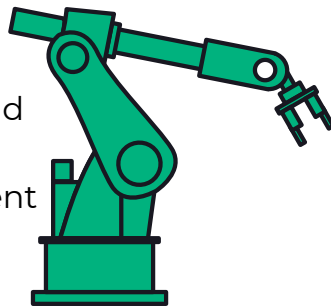
The fund currently has enough money to grant 5 scholarships of \$1,000 each. As we continue to collect donations and build the fund, we will be able to offer more scholarships and/or increase the amount offered.

Through donations and fundraising activities, we have provided scholarships to more than 50 KSU students who are children, grandchildren, or great-grandchildren of former Kennesaw State University or Southern Polytechnic State University faculty or staff members.

We appreciate the contributions retirees have made to our scholarships! For more info and to donate, please go to our website and click on "[Scholarships](#)."

Robotics Lab Tour

The KSU Retirees Association will tour the Robotics Labs on the Marietta campus. Join us on **October 10th at 1:00 p.m.** to see the exciting developments the faculty and students of the Robotics and Mechatronics Engineering department are working on. Space is limited so please watch for the email with the link to RSVP for this event.



Retiree Resources

(Click the link to open that resource)

- [KSU Retirees Association](#)
- [Osher Lifelong Learning Institute \(OLLI\)](#)
- [KSU Fitness Center](#)
- [USG Retirees page](#)
- [AROHE](#) - Assoc of Retirement Organizations in Higher Ed
- [GA-HERO](#) - Georgia Assoc of Higher Ed Retiree Orgs

2025-2026 Steering Committee Meetings

All meetings start at 10:00 a.m. in Town Point 4750 unless otherwise noted.

- August 8, 2025
 - September 12, 2025 - **no meeting due to Welcome Meeting event**
 - October 10, 2025 - **Marietta campus**
 - November 14, 2025
 - December 12, 2025 - **no meeting due to Holiday Gathering**
 - January 9, 2026
 - February 13, 2026
 - March 13, 2026
 - April 10, 2026
 - May 8, 2026
-

Reminder: The KSU Retirees Association supports **CARE Services** by accepting donations at all KSU Retirees Association events. You can visit the [CARE Campus Pantry page here](#), to see what items are needed for the pantry and a link to their Amazon wishlist.

As part of the recent Annual Retirement Ceremony, the KSU Retirees Association honored those who passed away since our last ceremony. Below is the poster used with their names.



Those We Remember

The list below identifies KSU/SPSU colleagues who passed away since we last gathered.

Kathy Bell
Shelvie Booth
Herman L. Bradshaw Jr.
Jean Bramlett
Glenn E. Brooks
Ronald Bullock
Stephen R. Cheshier
Beth Daniell
Kalisha Dunn
Frances Fowler
David Glankler
Gregory A. Greenwell
Gillian Haddle
Evilani Hail
Jeanine Heming
Daniel Henderson

Randy C. Hinds
Virginia Hinton
Sharon Joy Howard
Thomas Hughes
Frances Hunter
Carol S. Jelks
Lucius Johnson
Kris Kathires
Kenneth O. Kiesler
Richard Lang
Robert Lang
Mary L. Moss
Richard Myers
Lawrence R. Parris
Rebecca Peterson
Ann M. Powell

W.D. Proctor
Michael Roberts
Morris W. Roberts
Virginia Rogers
E. Howard Shealy
Nicole Small
Deborah Teilhet
Lanze Thompson
Harris T. Travis
Justin Vanoy
Stephanie Vereen
Frankline Vernet
Tauquir Warsi
James Whitenton
Julian A. Wilson Jr.
Ronald Young



Your Golden Owls Newsletter

The KSU Retirees Association Golden Owls Newsletter is for you. Please let us know what features you would like to read about, information you would find helpful, and suggestions you may have for us. You can send your comments to retirees@kennesaw.edu, and they will be shared with the Newsletter Committee.



Join the KSURA

The Kennesaw State University Retirees Association provides opportunities for all former KSU and SPSU employees to stay connected to one another and the University. The Retirees Association Steering Committee provides guidance and input for event planning, coordinates volunteer service in support of the University, and serves as a forum to advocate for the retired faculty and staff population. For more information, go to our website and click on "[About Us](#)".



The first 3 people to contact the Retirees Association and mention "The Eyes" will get a prize!

KSU Retirees Association 2025-26 Co-Chairs

David Baugher
Herb Smith
Ann Vancza
Chris Ziegler

The KSURA is an affinity group under the KSU Office of Alumni and Constituent Engagement

Thank you to Glynnis Holt, Program Coordinator, for assisting the KSU Retirees Association.

KSU RETIREES ASSOCIATION

www.kennesaw.edu/retirees

retirees@kennesaw.edu

470-578-2112

The KSU Retirees Association recently received the below information from the Board of Regents. Thank you to Dorothy Zinsmeister for sharing.

Dear faculty, staff and retirees,

We're pleased to share that at its August meeting, the Board of Regents approved the **2026 University System of Georgia (USG) healthcare plans and premiums** for active employees and pre-65 retirees. The Board also approved the **2026 Health Reimbursement Account (HRA) contribution for retirees 65 and older**.

Healthcare costs continue to rise due to increased utilization, higher medical costs and rising prescription drug prices. While this continues to impact the USG healthcare plan, **there will be limited plan design changes in 2026** thanks to significant updates over the past two years. Premium increases were capped to keep costs as affordable as possible for employees. Health promotion programs and the **\$100 well-being incentive** will continue for employees and covered spouses enrolled in a USG healthcare plan.

2026 Healthcare Plan Overview

- **Employee Premiums:** Increases of \$7–\$54 per month, depending on plan and coverage tier.
- **Pharmacy Out-of-Pocket Maximums:** Increased for Comprehensive Care and BlueChoice HMO plans.
- **Well-Being Incentive:** \$100 available for completing the Health Risk Assessment through your chosen provider.
- **Weight Management Programs:**
 - Anthem plans: Weight Watchers for employees and spouses
 - Kaiser plans: Omada weight management program
- **Consumer Choice HSA Plan:** HSA match reduced from \$375 → \$325 (employee only) and \$750 → \$650 (family). In-network individual out-of-pocket maximum for family tiers increases from \$9,200 → \$10,000.
- **Tobacco Use & Working Spouse Surcharges:** \$150/month. Certification is required each Open Enrollment in OneUSG Connect – Benefits, or the surcharge applies. More info: USG Surcharges.
- **Retiree 65+ HRA Contribution:** Reduced from \$2,640 → \$2,484 annually, a 6% reduction that mirrors the average employee-only premium increase

A full summary of 2026 plan designs and premiums is available on the [USG Benefits website](#).

Plan Now for Open Enrollment 2026

Employees

- **Dates:** Oct. 27 through Nov. 7
- **Action:** When the Open Enrollment portal opens on Oct. 27, complete your 2026 enrollment election and certifications through OneUSG Connect – Benefits by Nov. 7.
- **Virtual Support:** Appointments available via OneUSG Connect – Benefits for those needing help reviewing healthcare options. Limited slots, available only during Open Enrollment.
- **Benefits Fairs:** All employees are encouraged to attend to learn about 2026 plan changes and other USG benefits.

Retiree Information

- **Pre-65 Retirees:** Premium increases mirror active employee rates.
- **Medicare-eligible Retirees (65+):**
 - Enroll in supplemental healthcare coverage through **Alight Retiree Health Solutions**. Medicare Part A & B is primary coverage.
 - **HRA Contribution:** \$2,484 per year per Medicare-eligible retiree or dependent enrolled in at least one plan.
 - **Medicare Open Enrollment:** Oct. 15 – Dec 7. Coverage begins January 1, 2026.
 -

We encourage all retirees to **review their plan options annually** and contact Alight Retiree Health Solutions to ensure their coverage meets their needs. Options include low-premium Medicare Advantage (HMO & PPO) and Medicare Supplement plans.

Reminder: Dependents in a pre-65 USG plan will lose coverage if a retiree's enrollment is not maintained through Alight.