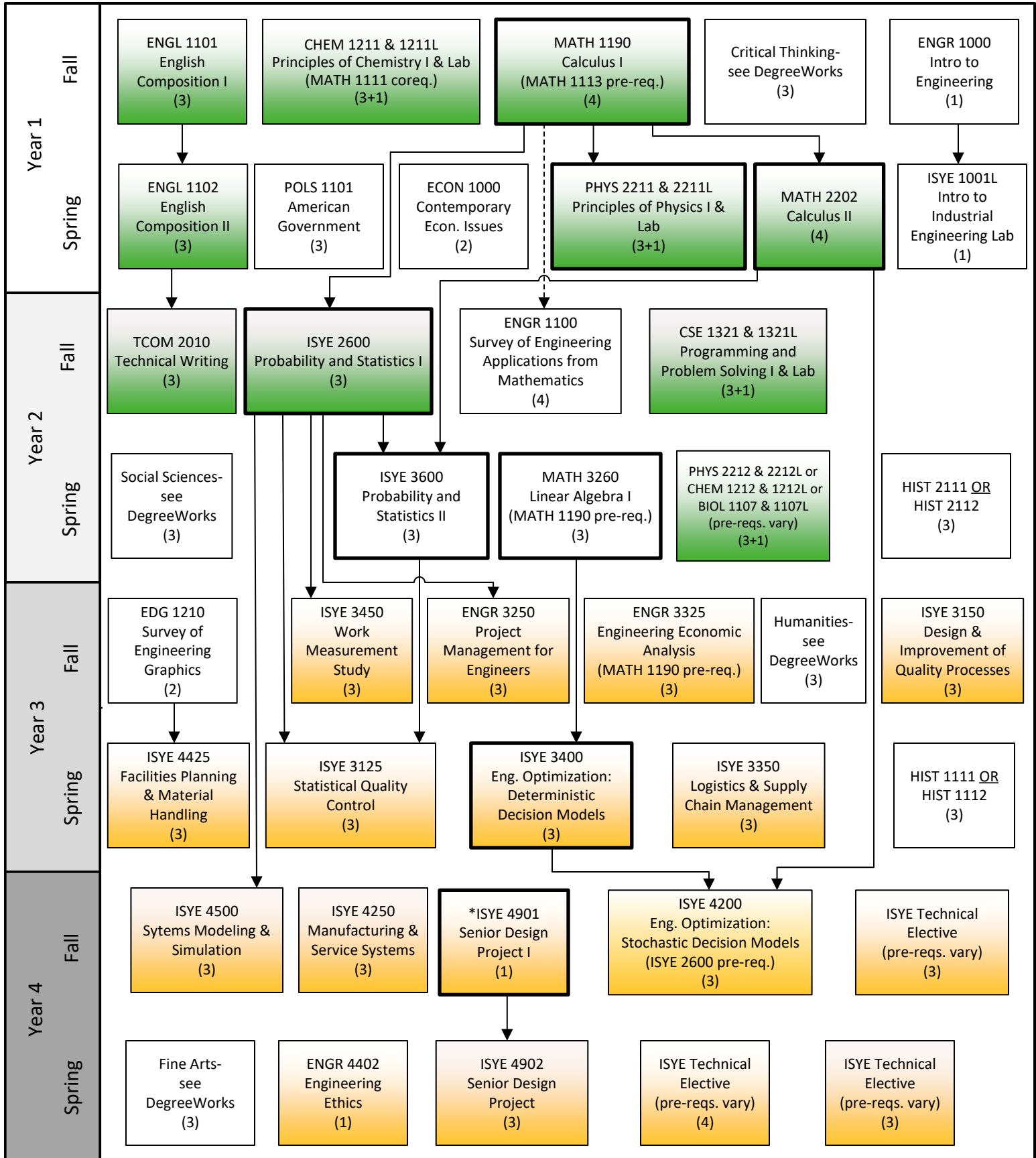




KENNESAW STATE
UNIVERSITY

B.S. Industrial and Systems Engineering: Industrial Concentration 2025-2026 Flowchart

Disclaimer: Although we have made every effort for this flowchart to be free of errors, it cannot be guaranteed correct for all students.
See DegreeWorks for official degree requirements.



—————> Pre-requisite
-----> Can be taken concurrently

Critical Path
(Take these courses as soon as you can.)

Needed to apply for Engineering Standing

Requires Engineering Standing

*ISYE 4901 requires Senior Standing
Only offered in summer and fall

Last updated 05/12/25