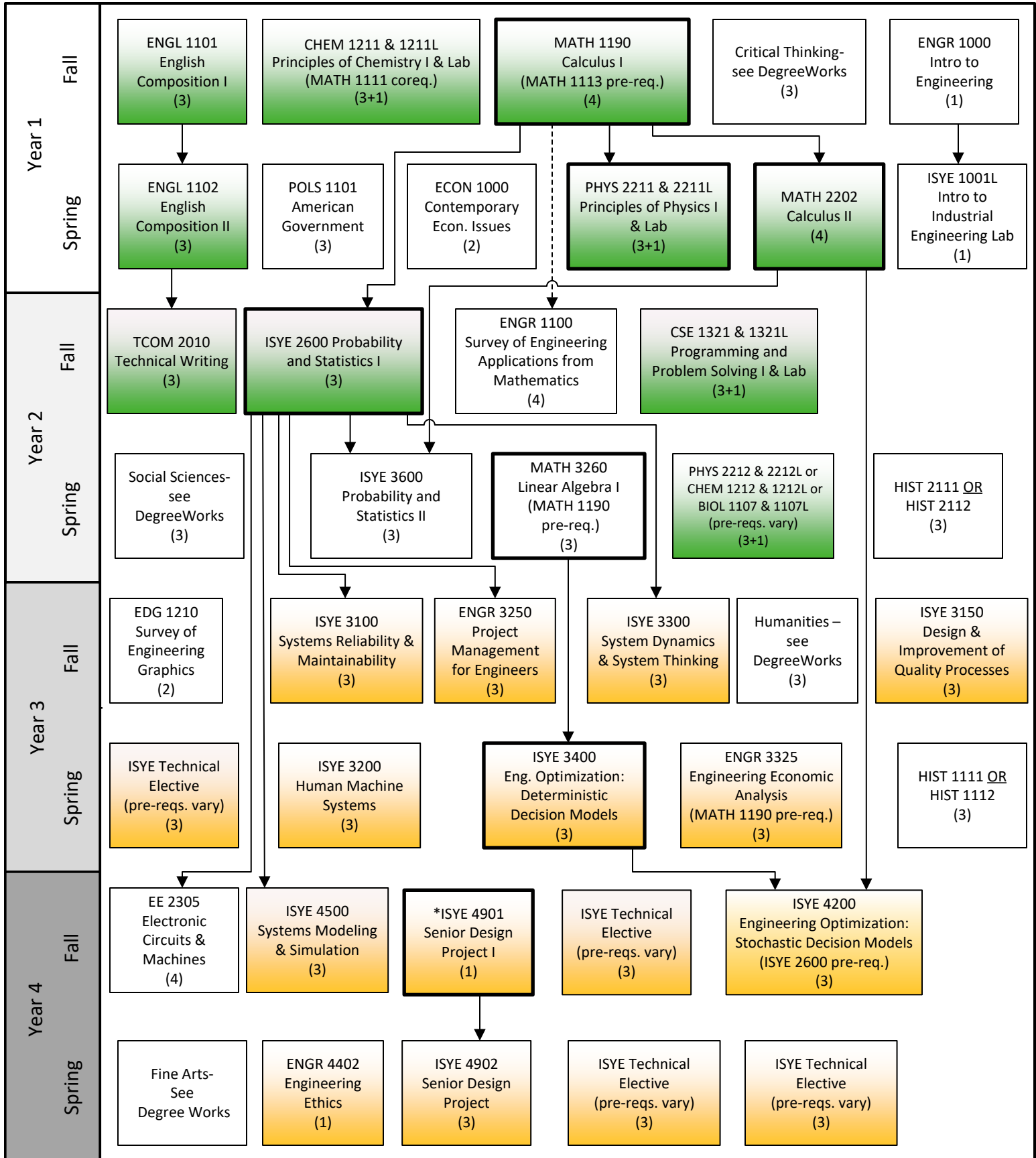




KENNESAW STATE
UNIVERSITY

B.S. Industrial and Systems Engineering: Systems Concentration 2025-2026 Flowchart

Disclaimer: Although we have made every effort for this flowchart to be free of errors, it cannot be guaranteed correct for all students.
See DegreeWorks for official degree requirements.



—————> Pre-requisite
- - - - -> Can be taken concurrently

*ISYE 4901 requires Senior Standing
Only offered in summer and fall

Critical Path
(Take these courses as soon as you can.)

Needed to apply for
Engineering
Standing

Requires
Engineering
Standing