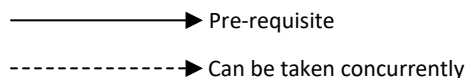
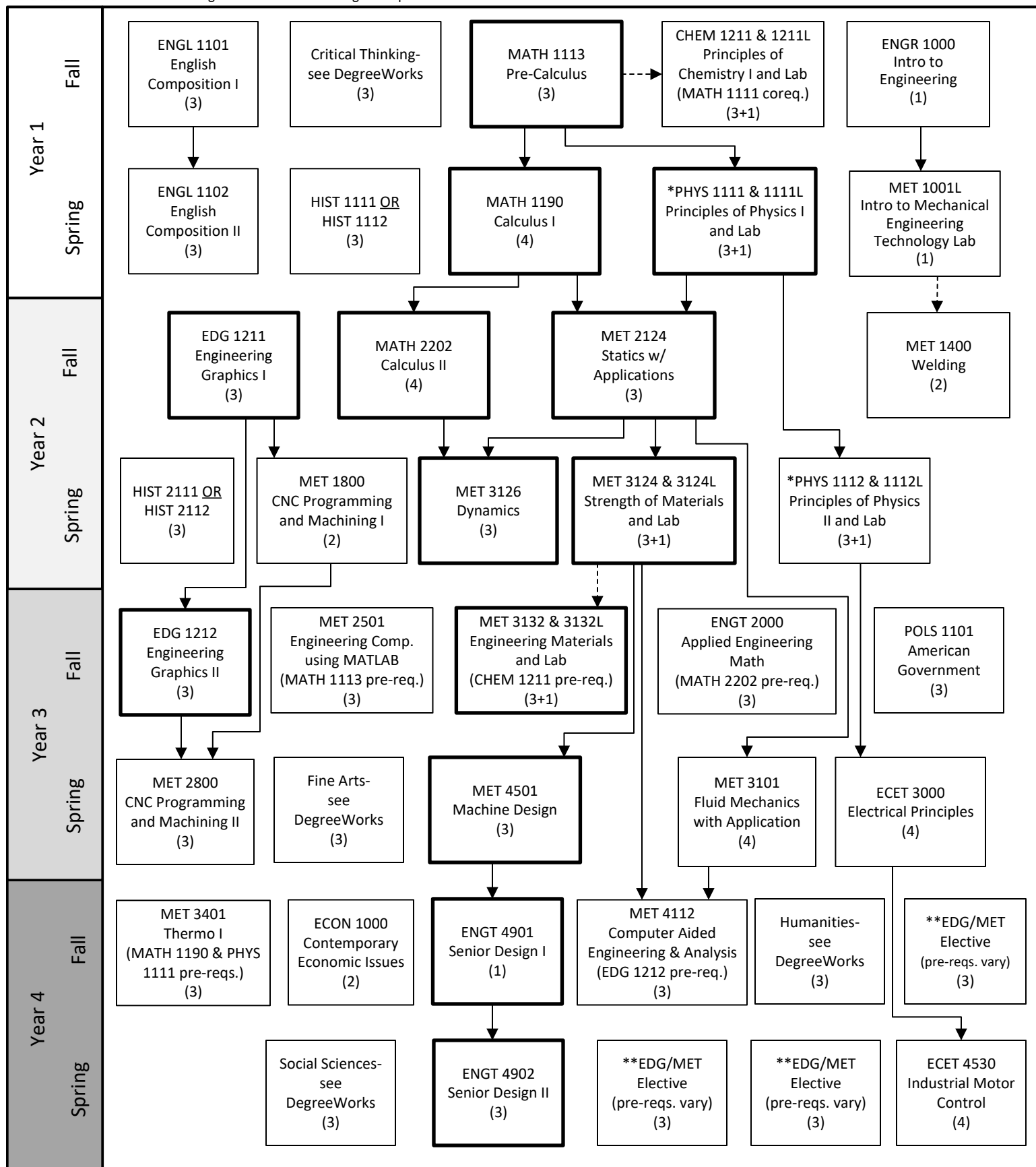




KENNESAW STATE
UNIVERSITY

B.S. Mechanical Engineering Technology 2025-2026 Flowchart

Disclaimer: Although we have made every effort for this flowchart to be free of errors, it cannot be guaranteed correct for all students.
See DegreeWorks for official degree requirements.



Critical Path
(Take these as soon as you can.)

*Note: PHYS 2211/2211L & PHYS 2212/2212L also satisfy the requirements.
**Any Appropriate 3 or 4 credit hour MET/EDG Elective course is acceptable.
Please pay attention to the concentration requirements found at catalog.kennesaw.edu or Degree Works. (Check your Degree Works for a list of approved courses and speak with your assigned academic advisor)